

LSWT

Linear Shockwave Therapy for Erectile Dysfunction Clinical Data and Reports



August 2016



INFO@DIREXGROUP.COM

DIREX

WWW.DIREXGROUP.COM

Table of Contents

Low-intensity Extracorporeal Shock Wave Treatment Improves Erectile Function: A Systematic Review and Meta-analysis.....	5
Zhihua vLu, vGuiting Lin, Amanda Reed-Maldonado, Chunxi Wang, Yung-Chin Lee, Tom F. Lue Accepted May 31, 2016	
Twelve-Month Efficacy and Safety of Low-Intensity Shockwave Therapy for Erectile Dysfunction in Patients Who Do Not Respond to Phosphodiesterase Type 5 Inhibitors.....	21
Amado Bechara, MD, PhD, Adolfo Casabé, MD, Walter De Bonis, MD, and Pablo Gomez Ciciclia, MD Sex Med 2016;:e1ee8	
Safety and efficacy of low intensity shockwave (LISW) treatment in patients with erectile dysfunction.....	32
A. Ruffo, M. Capece, D. Prezioso, G. Romeo, E. Illiano, L. Romis, G. Di Lauro, F. Iacono Int. Braz. J. Urol., 2015	
Linear Shock Wave Therapy in the Treatment of Erectile Dysfunction.....	39
M. Pelayo-Nieto, E. Linden-Castro, A. Alias-Melgar, D. Espinosa-Pérez Grovas, F. Carreño-de la Rosa, F. Bertrand-Noriega, R. Cortez-Betancourt Actas Urol Esp. 2015	
Effectiveness of Low-Intensity Extracorporeal Shock Wave Therapy on Patients with Erectile Dysfunction (ed) Who Have Failed to Respond to PDE5i Therapy. A Pilot Study.....	43
A. Bechara, A. Casabé, W. De Bonis, J. Nazar Archivos Españoles de Urología, April 2015	
Initial Experience with Linear Focused Shockwave Treatment for Erectile Dysfunction: a 6-Months Follow-Up Pilot Study.....	52
Y. Reisman, A. Hind, A. Varaneckas, I. Motil Internation Journal of Impotence Research, October 2014	
Safety and Efficient Duration of Linear Focused Shockwave Treatment for Erectile Dysfunction – A 12 months Follow-up Pilot Study.....	57
Y. Reisman 16 th World Meeting on Sexual Medicine, Sao Paulo, October 2014	

Long Term Efficacy of Low Intensity Linear Focused Shockwave Therapy for Vascular Erectile Dysfunction Patients: 20 months follow-up.....	59
A. Casarico, P. Puppo	
22 nd National Congress of the Italian Urological Association, Bologna, May 2015	
Initial Clinical Experience of Linear Focused, Low Intensity Shockwave for Treatment of ED Patients with Different Severity Symptoms.....	64
N. Cruz, A. Morales	
16 th World Meeting on Sexual Medicine, Sao Paulo, October 2014	
Efficacy and Safety of Linear Focused Shockwaves for Erectile Dysfunction (RENOVA) – A Second Generation Technology.....	66
Y. Reisman, A. Hind, A. Varaneckas, I. Motil	
12 th Congress of Latin American Society for Sexual Medicine (SLAMS), Cancun, August 2013	
Low intensity shock wave (LISW) treatment (Renova) in order to improve male sexual function: A preliminary data on 42 patients.....	68
F. Iacono, A. Ruffo, D. Prezioso, G. Romeo, E. Illiano, L. Romis, G. Di Lauro	
16 th Congress of the European Society for Sexual Medicine (ESSM), Istanbul, February 2014	
Low Intensity Linear Focused Shockwave Therapy: a New Treatment to Improve the Quality of Life of Vascular Erectile Dysfunction Patients.....	70
P. Puppo, A. Casarico	
21 st National Congress of the Italian Urology Association, Rome, June 2014	
Linear Low Intensity Shockwaves Treatment of Vasculogenic ED – First Results.....	73
I. Motil, T. Šramkova	
102 nd Annual Meeting of the Japanese Urological Association (JUA), Kobe, April 2014	
Efficacy and Safety of Linear Focused Shockwaves for Erectile Dysfunction (RENOVA) – A Second Generation Technology.....	75
Y. Reisman, A. Hind, A. Varaneckas, I. Motil	
2 nd Biennial Meeting of the Middle East Society for Sexual Medicine (MESSM), Dubai, November 2013	
Line Focused Shock Wave for Erectile Dysfunction – a different technological approach.....	77
A. Hind, O. Saleh, Y. Abu Asbeh	
5 th Pan Arab Congress of Sexual Medicine, Dubai, April 2013	

**The Effect of Low Intensity Shockwave Therapy on the Erectile Function of Smokers
and Non-smokers - Initial Report with a Dedicated System..... 80**

P. Puppo, A. Casarico

30th Italian society of Andrology Congress (SIA), Maratea, May 2014

Low-intensity Extracorporeal Shock Wave Treatment Improves Erectile Function: A Systematic Review and Meta-analysis

Zhihua vLu ^{a,b}, vGuiting Lin ^a, Amanda Reed-Maldonado ^a, Chunxi Wang ^b,
Yung-Chin Lee ^c, Tom F. Lue ^{a,*}

^a Knappe Molecular Urology Laboratory, Department of Urology, School of Medicine, University of California, San Francisco, CA, USA; ^b Department of Urology, The First Hospital of Jilin University, Changchun, People's Republic of China; ^c Department of Urology, Kaohsiung Medical University Hospital, Faculty of Medicine, College of Medicine, Kaohsiung Medical University, Kaohsiung, Taiwan

Article info

Article history:

Accepted May 31, 2016

Associate Editor:

Christian Gratzke

Keywords:

Erectile dysfunction (ED)

Low-intensity
extracorporeal shock
wave therapy (LI-ESWT)

Meta-analysis

Clinical outcome

International Index of
Erectile Function (IIEF)

Abstract

Context: As a novel therapeutic method for erectile dysfunction (ED), low-intensity extracorporeal shock wave treatment (LI-ESWT) has been applied recently in the clinical setting. We feel that a summary of the current literature and a systematic review to evaluate the therapeutic efficacy of LI-ESWT for ED would be helpful for physicians who are interested in using this modality to treat patients with ED.

Objective: A systematic review of the evidence regarding LI-ESWT for patients with ED was undertaken with a meta-analysis to identify the efficacy of the treatment modality. **Evidence acquisition:** A comprehensive search of the PubMed and Embase databases to November 2015 was performed. Studies reporting on patients with ED treated with LI-ESWT were included. The International Index of Erectile Function (IIEF) and the Erection Hardness Score (EHS) were the most commonly used tools to evaluate the therapeutic efficacy of LI-ESWT.

Evidence synthesis: There were 14 studies including 833 patients from 2005 to 2015. Seven studies were randomized controlled trials (RCTs); however, in these studies, the setup parameters of LI-ESWT and the protocols of treatment were variable. The meta-analysis revealed that LI-ESWT could significantly improve IIEF (mean difference: 2.00; 95% confidence interval [CI], 0.99–3.00; $p < 0.0001$) and EHS (risk difference: 0.16; 95% CI, 0.04–0.29; $p = 0.01$). Therapeutic efficacy could last at least 3 mo. The patients with mild–moderate ED had better therapeutic efficacy after treatment than patients with more severe ED or comorbidities. Energy flux density, number of shock waves per treatment, and duration of LI-ESWT treatment were closely related to clinical outcome, especially regarding IIEF improvement.

Conclusions: The number of studies of LI-ESWT for ED have increased dramatically in recent years. Most of these studies presented encouraging results, regardless of variation in LI-ESWT setup parameters or treatment protocols. These studies suggest that LI-ESWT could significantly improve the IIEF and EHS of ED patients. The publication of robust evidence from additional RCTs and longer-term follow-up would provide more confidence regarding use of LI-ESWT for ED patients.

Patient summary: We reviewed 14 studies of men who received low-intensity extracorporeal shock wave treatment (LI-ESWT) for erectile dysfunction (ED). There was evidence that these men experienced improvements in their ED following LI-ESWT.

2016 European Association of Urology. Published by Elsevier B.V. All rights reserved.

* Corresponding author. Department of Urology, University of California, San Francisco, 400 Parnassus Ave., Suite A-630, San Francisco, CA 94143-0738, USA. Tel. +1 415 353 7339;
Fax: +1 415 476 3803.
E-mail address: tlue@urology.ucsf.edu (T.F. Lue).

<http://dx.doi.org/10.1016/j.eururo.2016.05.050>

0302-2838/16 2016 European Association of Urology. Published by Elsevier B.V. All rights reserved.

1. Introduction

Phosphodiesterase type 5 inhibitors (PDE5-Is) are currently the most widely used treatments for male erectile dysfunction (ED); however, these medications merely treat ED symptoms. They do not correct the underlying penile pathophysiology, such as vascular lesions secondary to diabetes mellitus, structural lesions secondary to trauma, or neurologic injury secondary to prostatectomy, that is responsible for the ED [1]. A novel method to prevent the deterioration of erectile function due to these pathophysiologic processes is desperately needed. Based on studies generated from other clinical fields, low-intensity extracorporeal shock wave treatment (LI-ESWT) has been used to treat ED for almost 10 yr, and encouraging results have been reported.

Since the 1980s, when it was first introduced for renal lithotripsy, shock wave therapy has been rapidly adopted all over the world for different disease processes, producing either destructive effects or promoting regenerative effects. The shock wave is a kind of acoustic wave that carries energy and that, when propagating through a medium, can be targeted and focused noninvasively to affect a distant selected anatomic region. When LI-ESWT is applied to an organ, the shock waves interact with the targeted tissues and induce a cascade of biological reactions. This results in the release of growth factors, which in turn triggers neovascularization of the tissue with subsequent improvement of the blood supply [2]. LI-ESWT has been used to treat musculoskeletal disorders [3], myocardial infarction [4],

nonhealing wounds [5], and ED [6].

Improvements in both International Index of Erectile Function (IIEF) and Erection Hardness Score (EHS) have been reported after using LI-

ESWT for patients with ED. At the beginning of research into LI-ESWT, most studies were retrospective and included few patients. In the past 2 yr, well-designed prospective studies have been conducted and concluded that LI-ESWT is a feasible noninvasive method for improving male ED.

We performed a systematic review of the current body of literature investigating the application of LI-ESWT for ED. Our goal was to analyze the available data to determine the efficacy of LI-ESWT for ED.

2. Evidence acquisition

2.1 Search strategy

We performed a systematic search of PubMed and Embase databases for studies on LI-ESWT and ED. The search terms were *shock wave AND (erectile dysfunction OR IIEF OR EHS)*. We investigated the current studies of LI-ESWT for patients with ED, the therapeutic efficacy of LI-ESWT for patients with ED, and the relationship of therapeutic efficacy and different setup parameters and protocols.

2.2 Inclusion and exclusion criteria

All clinical studies that investigated the efficacy of LI-ESWT for ED were included regardless of study design. Both

randomized controlled trials (RCTs) and cohort studies were included. No limitation was placed on PDE5-I consumption during the LI-ESWT treatment period or on the severity of ED. The follow-up data were abstracted from these studies. If more than one study was published by a medical center, only the last report was included in our review. All literature reviews, editorial comments, background, animal models, and case reports were excluded.

2.3 Data extraction and synthesis

The abstracts were independently reviewed by three authors (Z.L., G.L., T.F.L.) to determine eligibility for inclusion. The basic details of the study, setup parameters of the LI-ESWT machine, treatment protocols, assessment tools, and *p* values were abstracted manually from each of the studies (G.L., Z.L.), and the data were verified (T.F.L.).

2.4 Study outcomes

Fourteen studies were included in our review. Seven studies were RCTs and were included for meta-analysis. The patients were distributed in different areas of the world, and there were no overlaps of populations among the studies. Details are shown in [Table 1](#) and Supplementary table.

2.5 Meta-analysis

The abstracted data were analyzed with RevMan 5.3 software (Cochrane Collaboration, London, UK). The risk of bias in the included studies was assessed by the Cochrane Collaboration's tool. The proper effect sizes and statistical analysis methods were chosen according to different data

types and evaluation purposes. For continuous variables, weighted mean difference (MD) and a 95% confidence interval [CI] were used. For discontinuous variables, risk difference (RD)

and a 95% CI were used. For the heterogeneity test between studies, the I^2 test was used. The data without significant heterogeneity ($p > 0.05$, $I^2 \leq 50\%$) were analyzed by the fixed-effects model. The data with heterogeneity that could

not be explained were analyzed by the random-effects model. The data that could not be analyzed were described. The results of the meta-analysis are presented in forest plots. Publication bias is presented in funnel plots.

3. Evidence synthesis

A Preferred Reporting Items of Systematic Reviews and Meta-analyses (PRISMA) flow chart of screening and selection results is shown as [Figure 1](#).

3.1 The current studies of low-intensity extracorporeal shock wave treatment for erectile dysfunction

A total of 14 studies involving 833 patients were included in this review. All of the studies were published between 2005 and 2015. These studies were performed by different medical centers in different countries. Most of these ED patients had an organic etiology, such as a vascular lesion [7,8], a nerve injury [9], or a lesion of the cavernous body of

Table 1 – Current studies of low-intensity extracorporeal shock wave treatment for erectile dysfunction patients

Study	Year of publication	Country	Disease	Setup of LESW		Protocol of LESW treatment			Follow-up, mo	Evaluation tools for ED	<i>p</i> value of IIEF after LI-ESWT	Study design
				Total treatment	No. of sites of courses, wk	No. of pulses each week	No. of treatments	Energy density, mJ/mm ² treatment				
Olsen et al [19]	2015	Denmark	ED	0.15	3000	1	6	5	1, 3, 6	IIEF-5, EHS	0.67	RCT
Frey A	2015	Denmark	ED after RP	NA	3000	2	3	6	1, 12	IIEF-5	0.0049	Cohort study
Bechara et al [15]	2015	Argentina	ED	0.09	5000	1	4	4	3	IIEF-6, SEP2, SEP3, GAQ	NA	Cohort study
Chung and Cartmill [7]	2015	Australia	ED	0.25	3000	2	4	6	1, 4	IIEF-5, EDITS, overall satisfaction score	<0.05	Cohort study
Pelayo-Nieto et al [8]	2015	Mexico	ED	0.09	5000	1	4	4	1, 6	IIEF, SEP, GAQ	0.013	Cohort study
Hisasue	2015	Japan	ED	0.09	1500	2	5	9	1, 3, 6	IIEF, EHS, MPCC	<0.05	Cohort study
Srini et al [16]	2015	Indian	ED	NA	NA	NA	NA	NA	1, 3, 6, 9, 12	IIEF-EF, EHS, CGIC	0.0001	RCT
Yee et al [18]	2014	Hong Kong	ED	0.09	1500	2	5	9	1	IIEF-ED, EHS,	0.001	RCT
Palmieri et al [10]	2012	Italy	ED + PD	0.25	2000	1	NA	4	3, 6	IIEF, quality of life	<0.05	Cohort study
Vardi et al [17]	2012	Israel	ED	0.09	1500	2	5	9	1	IIEF, EHS, penile blood flow	0.0322	RCT
Zimmermann et al [14]	2009	Austria	ED + chronic pelvic pain	0.25	3000	1	NA	4	1, 3	IIEF	0.034	RCT
Chitale et al [11]	2010	UK	ED + PD	NA	3000	1	NA	6	3, 6	IIEF	0.249	RCT
Poulakis et al [12]	2006	Germany	ED + PD	0.17	2000	1	NA	5	1, 3, 6	IIEF-5	0.205	RCT
Skolarikos et al [13]	2005	Greece	ED + PD	NA	3000	NA	NA	6	3, 12	IIEF-5	0.06	Cohort study

CGIC = Clinical Global Impression of Change; ED = erectile dysfunction; EDITS = Erectile Dysfunction Inventory of Treatment Satisfaction; EHS = Erectile Hardness Score; GAQ = Global Assessment Questionnaire; IIEF = International Index of Erectile Function; LI-ESWT = low-intensity extracorporeal shock wave treatment; MPCC = maximal penile circumferential change; NA = not available; PD = Peyronie's disease; RCT = randomized controlled trial; RP = radical prostatectomy; SEP = Sexual Encounter Profile.

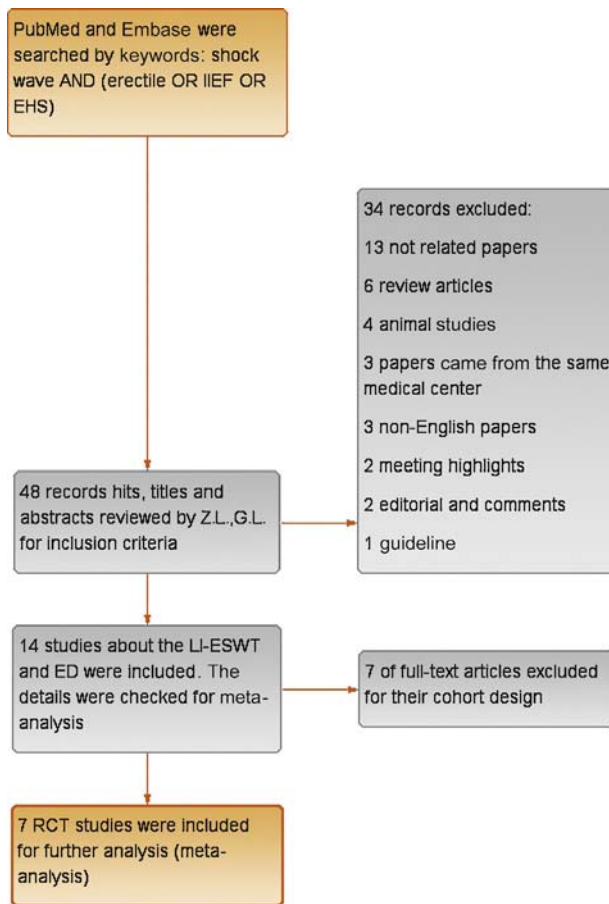


Fig. 1 – The search terms were *shock wave AND (erectile OR IIEF OR EHS)*. Forty-eight records were enrolled. After review, 14 studies about low-intensity extracorporeal shock wave treatment and erectile dysfunction were included. Seven were randomized controlled trials and were included in the meta-analysis.
ED = erectile dysfunction; EHS = Erection Hardness Score;
IIEF = International Index of Erectile Function; LI-ESWT = low-intensity extracorporeal shock wave treatment; RCT = randomized controlled trial.

Of the 14 included studies, 7 were RCTs, and the remaining 7 were cohort studies (Table 1). According to the conventions of evidence-based medicine, RCTs provide level 1 evidence, the highest level of evidence. Consequently, the seven RCTs were included for meta-analysis.

The setup parameters of LI-ESWT were different among studies. The energy flux density (EFD) varied from 0.09 to

0.25 mJ/mm², and the number of shock wave pulses of each

treatment was between 1500 and 5000. In most of the studies, LI-ESWT directed treatment at multiple sites on the penis during each treatment. The treatment course of most studies was not longer than 6 wk, and only three studies had a longer treatment course of 9 wk.

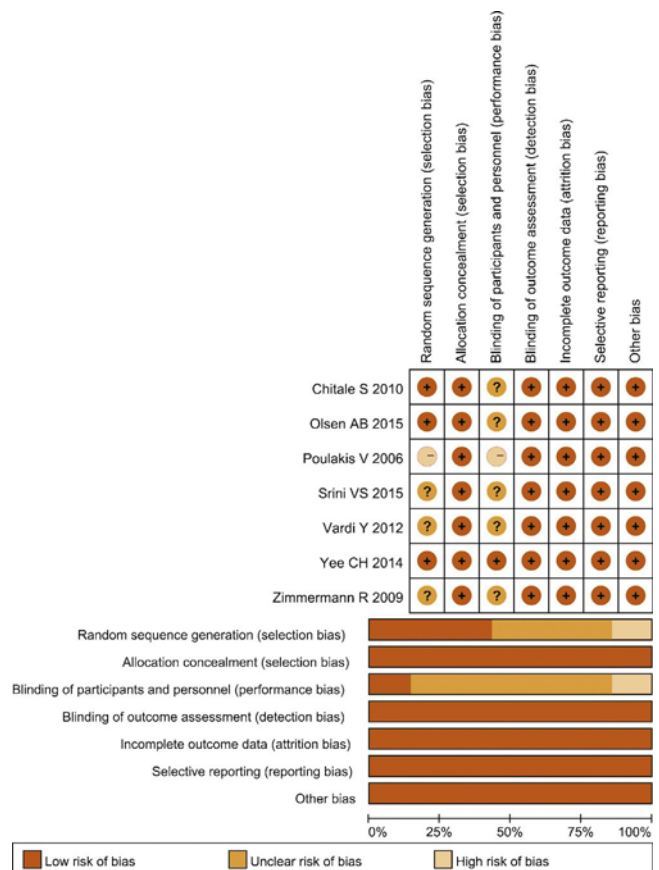
the penis (Peyronie's disease [PD]) [10–13]. One study focused on ED patients with chronic pelvic pain [14]. Most of the studies prohibited the usage of PDE5-Is during the treatment course. Some RCTs even set a washout period for patients who had taken PDE5-I before they started LI-ESWT. Only three studies did not limit the use of PDE5-Is during the treatment [10,11,15]. One of these studies was included for meta-analysis because of its RCT design.

The IIEF was the prevailing assessment tool for ED patients, and all studies in our analysis provided the IIEF before and after LI-ESWT. This made it possible to perform further meta-analysis. Another frequently used assessment tool was the EHS, which was provided by five studies. Other tools, such as the Sexual Encounter Profile, the Global Assessment Questionnaire, maximal penile circumferential change, and the Clinical Global Impression of Change, were not used consistently throughout multiple studies and so were not used for further meta-analysis.

3.2 The quality evaluation of the studies and analysis for the risk of bias

The Cochrane Collaboration's tool was used for assessing the quality of the study and the risk of bias. The RCTs reported that the patients were assigned randomly into LI-ESWT or control groups without describing the process of randomization [16,17]. Most studies did not describe how the physicians were blinded to the study participants. When the patients in the control group received the sham treatment, the LI-ESWT output energy would need to be reduced to zero, thus it would be difficult to keep the physician blinded to this change. Only the study by Yee et al [18] reported the details of how the double blinding was

Fig. 2 – There were seven randomized controlled studies included in our meta-analysis. The quality of studies was assessed with the Cochrane Collaboration's tool. This revealed that 57.1% of the studies had an unclear risk of bias in randomization, and only 16.7% of studies had good blinding for both patients and doctors.



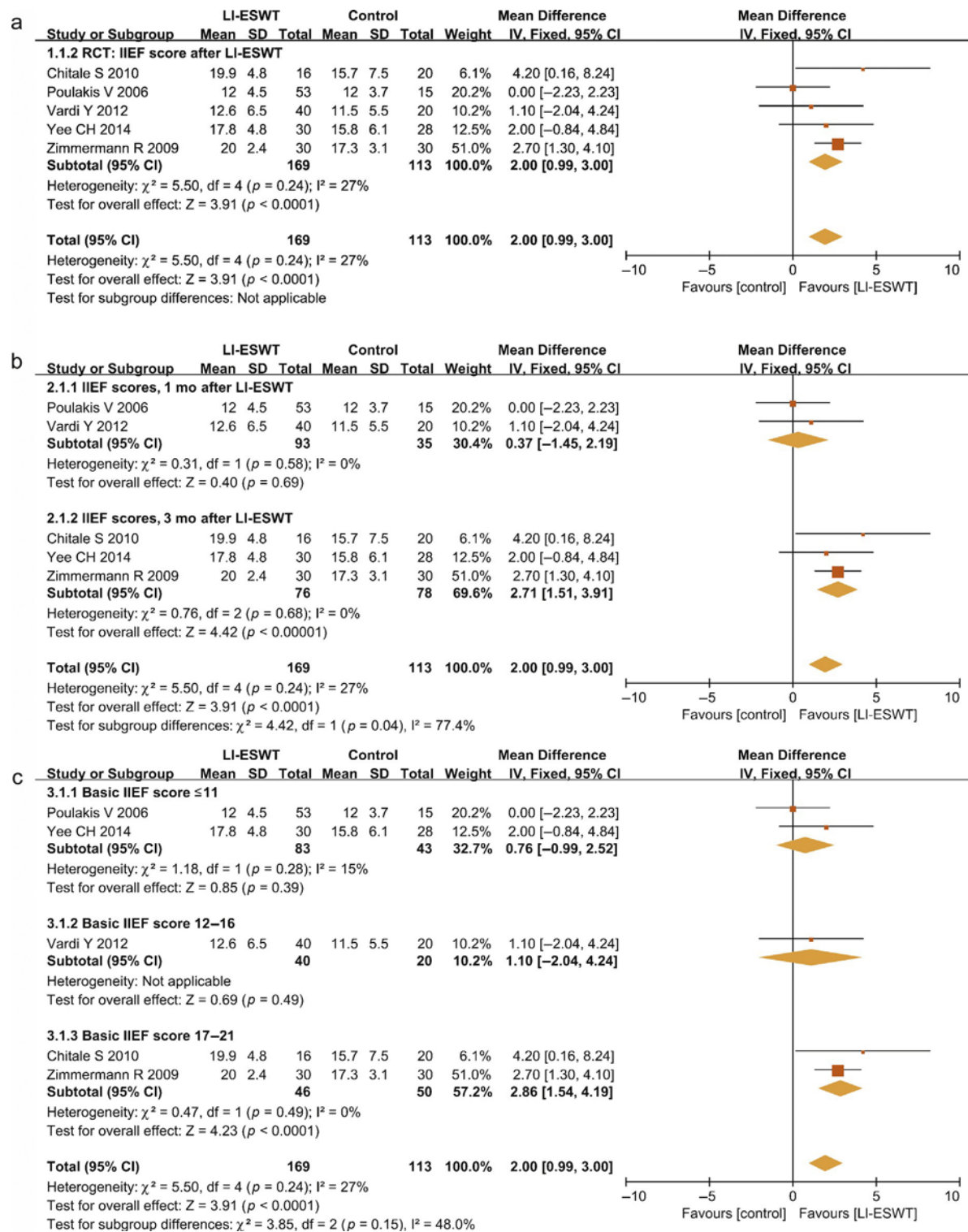


Fig. 3 – Clinical outcomes. (a) Although some studies did not prove that low-intensity extracorporeal shock wave treatment (LI-ESWT) could increase International Index of Erectile Function (IIEF), the meta-analysis results showed that LI-ESWT could improve IIEF significantly (mean difference [MD]: 2.00; 95% confidence interval [CI], 0.99–3.00; $p < 0.0001$). (b) Subgroup analysis: The studies that assessed the IIEF at 1 mo did not reveal a significant improvement (MD: 0.37; 95% CI, -1.45 to 2.19; $p = 0.69$). However, the studies assessing IIEF at 3 mo showed significant improvement (MD: 2.71; 95% CI, 1.51–3.91; $p < 0.0001$). (c) The IIEF in the group with mild erectile dysfunction (ED) increased significantly (MD: 2.86; 95% CI, 1.54–4.19; $p < 0.0001$), but in the severe and moderate groups, it did not ($p = 0.39$ and $p = 0.49$, respectively). (d) The studies of ED patients without any comorbidities revealed a significant increase of IIEF (MD: 2.36; 95% CI, 1.19–3.53; $p < 0.0001$) compared with the studies recruiting ED patients with Peyronie's disease. (e) The IIEF of patients in the group with LI-ESWT plus phosphodiesterase type 5 inhibitors improved more significantly (MD: 4.20; 95% CI, 0.16–8.24; $p = 0.04$).

CI = confidence interval; ED = erectile dysfunction; IIEF = International Index of Erectile Function; IV = inverse variance; LI-ESWT = low-intensity extracorporeal shock wave treatment; PD = Peyronie's disease; PDE5-I = phosphodiesterase type 5 inhibitor; RCT = randomized controlled trial; SD, standard deviation.

ensured. [Figure 2](#) shows that 57.1% studies had an unclear risk of bias in randomization and that only 16.7% of studies had good blinding for both patients and doctors.

3.3 The evaluation of the therapeutic efficacy of low-intensity extracorporeal shock wave treatment for patients with erectile dysfunction

The IIEF, the prevailing assessment tool for ED patients, was available for abstraction from five RCTs. The data included mean value and standard deviation of the IIEF and the number of patients in the treatment and control groups. The studies by both Yee et al [\[18\]](#) and Poulakis et al [\[12\]](#) concluded that the IIEF did not increase significantly in the treatment group compared with the control group; the p values were 0.156 and 0.205, respectively. The remaining three RCTs reported that the IIEF increased significantly in the LI-ESWT group compared with the control group

[\[11,14,17\]](#); the p value was <0.05 . The overall meta-

analysis of the data revealed that LI-ESWT improved the IIEF significantly overall in the treatment groups (MD: 2.00; 95% CI, 0.99–3.00; $p < 0.0001$) ([Fig. 3a](#)).

Subgroup analysis was performed. [Figure 3b](#) shows that Poulakis et al [\[12\]](#) and Vardi et al [\[17\]](#) assessed IIEF at 1 mo after LI-ESWT and that the IIEF did not increase significantly (MD: 0.37; 95% CI, —1.45 to 2.19; $p = 0.69$). Three other

studies, however, assessed IIEF at 3 mo after treatment and found that the IIEF increased significantly (MD: 2.71; 95% CI, 1.51–3.91; $p < 0.0001$). In [Figure 3c](#), the studies were divided into three groups by the IIEF before LI-ESWT—C11,

12–16, and 17–21—corresponding to severe, moderate, and mild ED, respectively. The meta-analysis showed that the IIEF of patients in the mild ED group increased significantly after LI-ESWT (MD: 2.86; 95% CI, 1.54–4.19; $p < 0.0001$).

The patients in the severe and moderate groups did not

show a significant increase in IIEF ($p = 0.30$ and $p = 0.49$). In [Figure 3d](#), the studies were divided into two groups: the ED group and the ED with PD group. The subgroup analysis showed that the patients in the ED group improved significantly in IIEF (MD: 2.36; 95% CI, 1.19–3.53;

$p < 0.0001$). The patients in the ED with PD group had no

significant improvement in IIEF ($p = 0.33$).

Finally, the studies were divided into two groups by usage of PDE5-Is. [Figure 3e](#) shows that the IIEF increased in both groups but

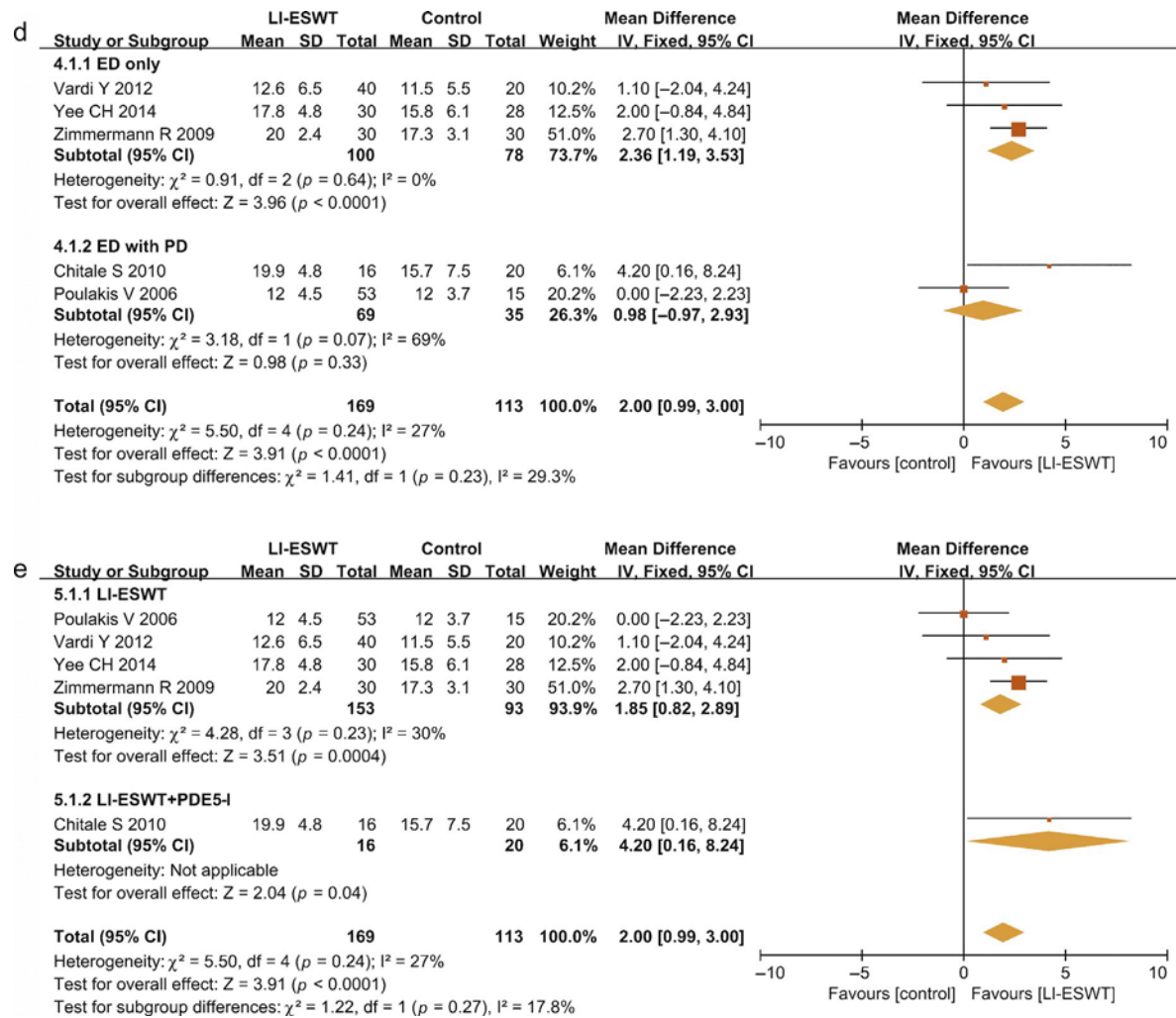


Fig. 3. (Continued).

increased more significantly in the group with LI-ESWT combined with PDE5-I use (MD: 4.20; 95% CI, 0.16–8.24;

$p = 0.04$).

These results indicate that LI-ESWT increased the IIEF and improved the erectile function of ED patients. According to the results of the current studies, the patients treated by LI-ESWT developed a good therapeutic effect by 3 mo. The patients who had mild or moderate ED and the ED patients who had no comorbidities benefited more from LI-ESWT than the patients with severe ED or with comorbidities.

Different LI-ESWT setup parameters, such as EFD and number of pulses, and different treatment protocols, including treatment frequency and length of course, resulted in differences in reported efficacy. The studies were divided into three groups according to EFD. The results

(Fig. 4a) showed that the studies using the highest EFD (>0.2 mJ/mm²) reported significantly increased IIEFs (MD: 2.86; 95% CI, 1.54–4.19; $p < 0.0001$). The improvement of IIEF in this ED and PD subgroup was partially due to the

improvement of PD. After excluding this subgroup, we found that the improvement in IIEF was better in the group with EFD 0.09 mJ/mm² compared with EFD 0.1–0.2 mJ/mm², although neither group reached statistical significance. Next, the studies were divided into two groups based on the number of shock waves delivered during each treatment. The results (Fig. 4b) showed that the studies administering more shock waves reported a significant increase in IIEF (MD: 2.86; 95% CI, 1.54–4.19; $p < 0.0001$) compared with the studies delivering fewer shock waves. To

compare different durations of treatment, the studies were divided into two groups according to

duration of treatment of LI-ESWT. Figure 4c shows that the studies with a treatment course of <6 wk reported a significant increase in the IIEF (MD: 2.11; 95% CI, 0.98–3.25; $p = 0.0003$).

These results suggest that different setup parameters and different treatment protocols of LI-ESWT have substantial influence on therapeutic efficacy. In summary, within the scope of this review, lower energy density,

increased number of pulses, and shorter treatment courses of <6 wk resulted in better therapeutic efficacy.

The EHS data were available for abstraction from four

RCTs. In the studies by Yee et al [18] and Olsen et al [19], EHS was reported at 3 mo after LI-ESWT. In the study by Yee et al, the EHS did not increase significantly. In subgroup analysis (Fig. 5), at 1 mo after LI-ESWT, the EHS increased significantly in three studies (RD: 0.47; 95% CI, 0.38–0.56; $p < 0.00001$). EHS did not improve as significantly after

3 mo as it did after 1 mo, but it still increased with statistical significance (RD: 0.16; 95% CI, 0.04–0.29; $p = 0.01$). These results indicate that LI-ESWT improves the erectile hardness of the penis for ED patients, especially at 1 mo after treatment, and that this improvement lasts for at least 3 mo.

3.4 Discussion

LI-ESWT has been used as a novel therapy for ED patients for the past 10 yr. Clinical studies and reports focused on this topic have increased dramatically in past 5 yr, especially in

2015. This implies that LI-ESWT as a therapeutic method for patients with ED has been increasingly adopted by both physicians and patients.

The IIEF is a patient-reported assessment that is purely subjective. In this review, we found that in some studies, patients in the control group also reported improvement of the IIEF [12,17,18]; however, patients in the LI-ESWT group improved more significantly than those in the control group. The range of improvement in the IIEF was from 5.3 to

7.6 points for the LI-ESWT group in our analysis [14,18]. It is undeniable that some studies revealed improvement with statistical significance; however, this improvement may have no significant clinical value. The minimal clinically important difference (MCID) of IIEF better assesses the true clinical efficacy of LI-ESWT. We recommend that, in the future, investigators use the MCID of IIEF as a more accurate and meaningful tool for evaluating the effect of LI-ESWT in the treatment of patients with ED [20].

The clinical outcome of LI-ESWT is closely related to the energy delivered to the target unit area, or EFD. The EFD used varied from 0.09 to 0.25 mJ/mm² among the studies included in our analysis. Based on this review, we could not determine the best EFD for ED therapy. Studies investigating the use of LI-ESWT for various regenerative purposes have used varying energy densities. An investigation by Goertz et al showed that an energy density of 0.04 mJ/mm² could accelerate angiogenesis for skin burns [21]. The study by Abe et al revealed that an energy density of 0.1 mJ/mm² for a rat model of acute myocardial infarction suppressed ventricular remodeling and had a good anti-inflammatory

effect [22]. The study by Tara et al found that an energy density of 0.11–0.21 mJ/mm² could encourage therapeutic angiogenesis for human ischemic tissues [23]. Ioppolo et al reported that for some musculoskeletal disorders, energy density could be increased to 0.3 mJ/mm² [24]. In the current review, most of the included studies used an energy density of 0.09 mJ/mm², which Vardi et al first reported in 2010 [17]. Most subsequent studies adopted this EFD and presented encouraging results. Additional studies and a longer duration of treatment are needed to establish whether therapeutic efficacy is positively correlated with energy density.

Some studies included in our review concluded that the biological efficacy of LI-ESWT was dosage dependent [25]. It seemed that more pulses would bring better biological efficacy. With this hypothesis in mind, some studies adopted multiple treatment sites, more frequent treatments, and longer courses of treatment. Meta-analysis showed that 3000 pulses per treatment brought more improvement than 1500 or 2000 pulses per treatment; however, more frequent treatment and longer treatment course did not improve erectile function significantly. The optimal treatment protocol remains to be defined. Whether there may be a plateau stage of treatment remains uncertain and requires further investigation. In addition, based on the premise that more treatment sites would produce better results, shock waves were delivered to multiple sites, such as the dorsal surface, both sides, and both crus of the penis. It seemed that more sites treated

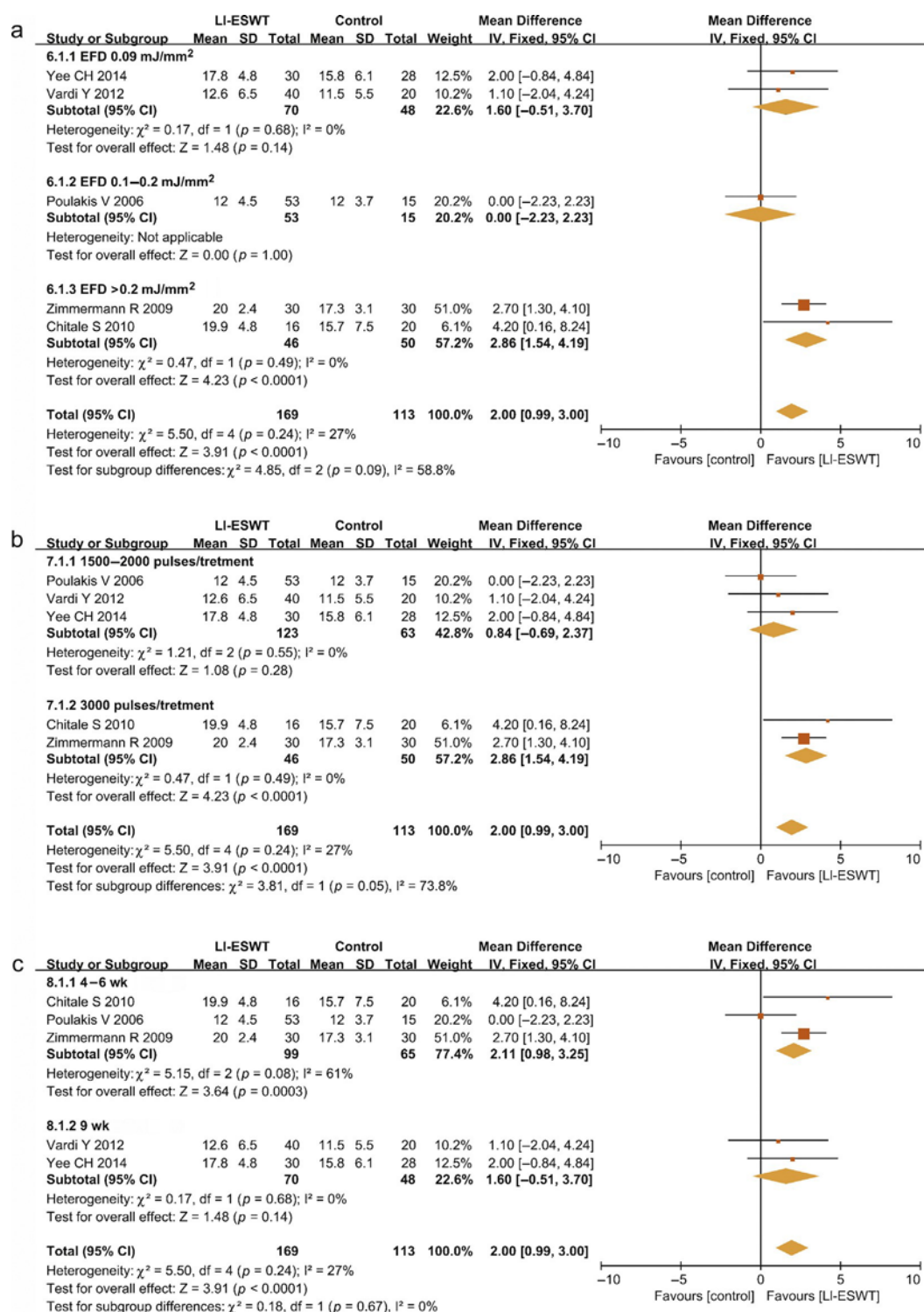


Fig. 4 – Relationship of energy dosage and treatment procedures. (a) The studies using higher energy flux density (EFD; >0.2 mJ/mm²) resulted in significantly increased International Index of Erectile Function (IIEF; mean difference [MD]: 2.86; 95% confidence interval [CI], 1.54–4.19; $p < 0.0001$) in the erectile dysfunction (ED) and Peyronie's disease groups. In ED-only groups, the improvement of IIEF was better for the group with EFD 0.09 mJ/mm² compared with EFD 0.1–0.2 mJ/mm², although it did not reach statistical significance. (b) The studies delivering more shock waves per treatment resulted in an increased IIEF (MD: 2.86; 95% CI, 1.54–4.19; $p < 0.0001$). (c) The studies with total course of treatment <6 wk revealed significant IIEF increase (MD: 2.11; 95% CI, 0.98–3.25; $p = 0.0003$) versus studies with longer courses of treatment (9 wk). CI = confidence interval; EFD = energy flux density; IV = inverse variance; LI-ESWT = low-intensity extracorporeal shock wave treatment; SD, standard deviation.

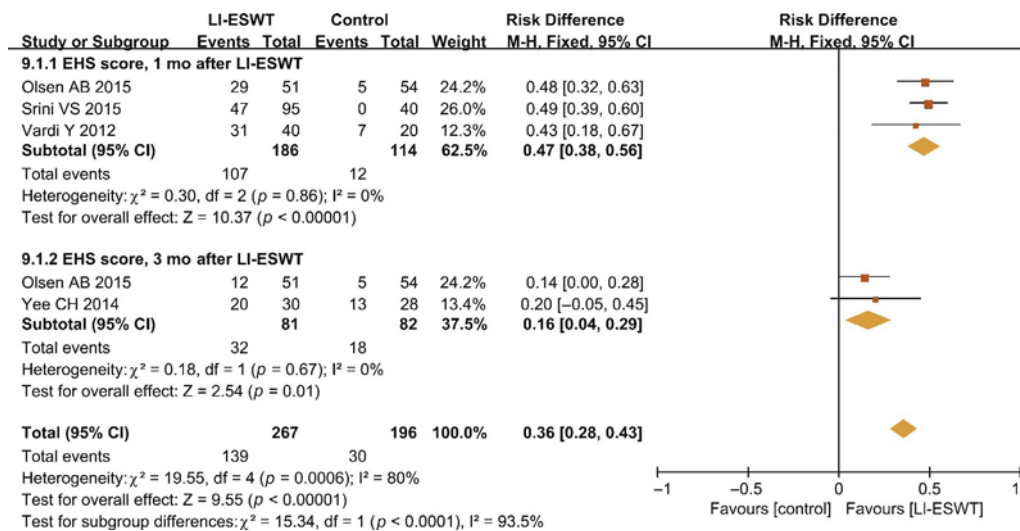


Fig. 5 – The Erection Hardness Score (EHS) increased significantly (risk difference [RD]: 0.47; 95% confidence interval [CI], 0.38–0.56; $p < 0.00001$) at 1 mo after treatment. Three months later, EHS slightly decreased but still improved with statistical significance (RD: 0.16; 95% CI, 0.04–0.29; $p = 0.01$). CI = confidence interval; EHS = Erection Hardness Score; LI-ESWT = low-intensity extracorporeal shock wave treatment; M-H = Mantel-Haenszel.

might produce better results. It is well known that shock waves can propagate 3–5 cm in human tissue [26]. It remains to be determined if it is necessary or beneficial to deliver treatment to multiple sites. This is also an area of potential future investigation.

The underlying mechanism of action of LI-ESWT is currently under investigation. According to recent reports, the effect is primarily related to the stimulation of cell proliferation, tissue regeneration, and angiogenesis [27,28]. In 2013, Qiu et al explored the therapeutic effect of LI-ESWT on a diabetic animal model and demonstrated that LI-ESWT can partially resolve diabetes mellitus-associated ED by promoting regeneration of neuronal nitric oxide synthase (nNOS)-positive nerves, endothelium, and smooth muscle in the penis [28]. Meanwhile, Liu and colleagues reported their results after treatment of a rat model of ED with LI-ESWT. The expression of some proteins, such as α -smooth muscle actin, von Willebrand factor, nNOS, and vascular endothelial growth factor, was upregulated [29]. In 2013,

Siegfried and colleagues reported that LI-ESWT could stimulate the regeneration of injured nerve fibers. They believed that the potential mechanism of LI-ESWT was enhanced by neovascularization in the regenerating nerve and that VEGF and transforming growth factor β were associated with the process [30]. Very recently, it was reported that LI-ESWT improved erectile function in a rat model of pelvic neurovascular injury. Penile tissue components, especially vascular and neuronal tissue, demonstrated improved recovery after LI-ESWT therapy [27].

Several weaknesses contributed to the quality of the data provided. As shown in Table 1, five of seven studies published in 2015 were cohort studies. It is undeniable that these cohort studies have good study designs and robust data collection; each has an appropriate sample size and clear comparison. In evidence-based medicine, however, the evidence level of cohort studies is level 2, and thus they have lower power than RCTs, which provide level

1 evidence. To evaluate the efficacy of LI-ESWT more accurately, more RCTs with good study designs are needed. In addition, even in the RCTs that were included in this review, there were still some deficiencies. The details of randomization, the implementation of double blinding, the details of the treatment protocol, and the data from long-term follow-up are fundamental factors for assessing the quality of a study. As shown in [Figure 2a](#) and [2b](#), we found that most of the included RCTs did not describe the details of randomization or blinding, and the potential biases involved are unclear. If bias existed, it would have a great impact on the interpretation of the meta-analysis.

Most of the studies focused on the improvement of erectile function after LI-ESWT. Nevertheless, the potential impact of factors related to ED, such as age, hypertension, diabetes, hyperlipidemia, and coronary artery disease, are not discussed. Only four RCTs in our analysis provided the age data comparing the patients in the treatment and control groups [\[12,17–19\]](#). No further investigation was performed to determine the influence of age on the efficacy of LI-ESWT. Three RCTs provided the profile of patient comorbidities, such as hypertension, diabetes, hyperlipidemia, and coronary artery disease, but no further information was provided about the relationship between the clinical outcome of LI-ESWT and those comorbidities [\[17–19\]](#). In the future, more RCTs with stratification of age and comorbidities will help determine the influence of these factors on the efficacy of LI-ESWT for patients with ED.

With the aim of determining the efficacy of LI-ESWT alone and to avoid confusion, most of the included studies prohibited the usage of PDE5-Is during shock wave treatment. Nevertheless, because the goal of treatment is to

maximize improvement of erectile function, a combination of LI-ESWT and PDE5-Is may be the best choice. Gruenwald et al found that LI-ESWT effectively converted PDE5-I nonresponders to responders [\[31\]](#), and our results ([Fig. 3e](#)) support the use of LI-ESWT and PDE5-Is in

combination. Additional clinical trials are needed to further investigate this clinical question.

4. Conclusions

In recent years, LI-ESWT as a therapy for ED has attracted extensive attention. Studies of this topic have increased sharply, and most of these studies reveal encouraging results, such as improved IIEF and EHS and an effect that lasts up to 3 mo. The setup parameters and the treatment protocols are important for the therapeutic effects of LI-ESWT for patients with ED. The mechanism of LI-ESWT is to improve or even reverse the pathologic damage of tissue that causes ED. Additional studies are needed to explore the influences of age and comorbidities on response to LI-ESWT and to define the effects of LI-ESWT in combination with PDE5-Is. From our review, it is clear that LI-ESWT may have the potential to be the first-choice noninvasive treatment for patients with ED.

Author contributions: Tom F. Lue had full access to all the data in the study and takes responsibility for the integrity of the data and the accuracy of the data analysis.

Study concept and design: Lue, Lin.

Acquisition of data: Lin, Lu, Lee, Wang.

Analysis and interpretation of data: Lu, Lee, Lin.

Drafting of the manuscript: Lu, Lin, Reed-Maldonado.

Critical revision of the manuscript for important intellectual content: Lin, Reed-Maldonado, Lue.

Statistical analysis: Lu, Lin.

Obtaining funding: Lue, Lin.

Administrative, technical, or material support: Wang, Lu.

Supervision: Lue.

Other (specify): None.

Financial disclosures: Tom F. Lue certifies that all conflicts of interest, including specific financial interests and relationships and affiliations relevant to the subject matter or materials discussed in the manuscript (eg, employment/affiliation, grants or funding, consultancies, honoraria, stock ownership or options, expert testimony, royalties, or patents filed, received, or pending), are the following: Tom F. Lue is a consultant for Pfizer, Eli Lilly, and Boston Scientific and chief medical officer and stock holder for AWCT, Inc.

Funding/Support and role of the sponsor: This work was supported by the US Army, Navy, Air Force, Department of Veterans Affairs and Office of Health Affairs to support the AFIRM II effort under award W81XWH-13-2-0052. The US Army Medical Research Acquisition Activity (820 Chandler Street, Fort Detrick, MD 21702-5014, USA) is the awarding and administering acquisition office. Opinions,

interpretations, conclusions and recommendations are those of the authors and are not necessarily endorsed by the US Department of Defense.

Acknowledgments: We thank Dr. Chi-Fai Ng for providing us with the data details of their study. Dr. Chi-Fai Ng is from Division of Urology, Department of Surgery, Prince of Wales Hospital, the Chinese University of Hong Kong, Hong Kong, China.

Appendix A. Supplementary data

Supplementary data associated with this article can be found, in the online version, at <http://dx.doi.org/10.1016/j.eururo.2016.05.050>.

References

- [1] Hatzichristou D, d'Anzeo G, Porst H, et al. Tadalafil 5 mg once daily for the treatment of erectile dysfunction during a 6-month observational study (EDATE): impact of patient characteristics and comorbidities. *BMC Urol* 2015;15:111.
- [2] Rassweiler JJ, Knoll T, Kohrmann KU, et al. Shock wave technology and application: an update. *Eur Urol* 2011;59:784–96.
- [3] Hazan-Molina H, Reznick AZ, Kaufman H, Aizenbud D. Periodontal cytokines profile under orthodontic force and extracorporeal shock wave stimuli in a rat model. *J Periodontol Res* 2015;50:389–96.
- [4] Becker M, Goetzenich A, Roehl AB, et al. Myocardial effects of local shock wave therapy in a Langendorff model. *Ultrasonics* 2014;54:131–6.
- [5] Hayashi D, Kawakami K, Ito K, et al. Low-energy extracorporeal shock wave therapy enhances skin wound healing in diabetic mice: a critical role of endothelial nitric oxide synthase. *Wound Repair Regen* 2012;20:887–95.
- [6] Abu-Ghanem Y, Kitrey ND, Gruenwald I, Appel B, Vardi Y. Penile low-intensity shock wave therapy: a promising novel modality for erectile dysfunction. *Korean J Urol* 2014;55:295–9.
- [7] Chung E, Cartmill R. Evaluation of clinical efficacy, safety and patient satisfaction rate after low-intensity extracorporeal shock-wave therapy for the treatment of male erectile dysfunction: an Australian first open-label single-arm prospective clinical trial. *BJU Int* 2015;115(Suppl 5):46–9.
- [8] Pelayo-Nieto M, Linden-Castro E, Alias-Melgar A, et al. Linear shock wave therapy in the treatment of erectile dysfunction. *Actas Urol Esp* 2015;39:456–9.
- [9] Frey A, Sonksen J, Fode M. Low-intensity extracorporeal shockwave therapy in the treatment of postprostatectomy erectile dysfunction: a pilot study. *Scand J Urol* 2016;50:123–7.
- [10] Palmieri A, Imbimbo C, Creta M, Verze P, Fusco F, Mirone V. Tadalafil once daily and extracorporeal shock wave therapy in the management of patients with Peyronie's disease and erectile dysfunction: results from a prospective randomized trial. *Int J Androl* 2012;35:190–5.
- [11] Chitale S, Morsey M, Swift L, Sethia K. Limited shock wave therapy vs sham treatment in men with Peyronie's disease: results of a prospective randomized controlled double-blind trial. *BJU Int* 2010;106:1352–6.
- [12] Poulakis V, Skriapas K, de Vries R, et al. Extracorporeal shockwave therapy for Peyronie's disease: an alternative treatment? *Asian J Androl* 2006;8:361–6.
- [13] Skolarikos A, Alargof E, Rigas A, Deliveliotis C, Konstantinidis E. Shockwave therapy as first-line treatment for Peyronie's disease: a prospective study. *J Endourol* 2005;19:11–4.
- [14] Zimmermann R, Cumpas A, Miclea F, Janetschek G. Extracorporeal shock wave therapy for the treatment of chronic pelvic pain syndrome in males: a randomised, double-blind, placebo-controlled study. *Eur Urol* 2009;56:418–24.
- [15] Bechara A, Casabe A, De Bonis W, Nazar J. Effectiveness of low-intensity extracorporeal shock wave therapy on patients with erectile dysfunction (ED)

- who have failed to respond to PDE5i therapy. A pilot study. *Arch Esp Urol* 2015;68:152–60.
- [16] Srinivas Reddy RK, Shultz T, Denes B. Low intensity extracorporeal shockwave therapy for erectile dysfunction: a study in an Indian population. *Can J Urol* 2015;22:7614–22.
- [17] Vardi Y, Appel B, Kilchevsky A, Gruenwald I. Does low intensity extracorporeal shock wave therapy have a physiological effect on erectile function? Short-term results of a randomized, double-blind, sham controlled study. *J Urol* 2012;187:1769–75.
- [18] Yee CH, Chan ES, Hou SS, Ng CF. Extracorporeal shockwave therapy in the treatment of erectile dysfunction: a prospective, randomized, double-blinded, placebo controlled study. *Int J Urol* 2014;21:1041–5.
- [19] Olsen AB, Persiani M, Boie S, Hanna M, Lund L. Can low-intensity extracorporeal shockwave therapy improve erectile dysfunction? A prospective, randomized, double-blind, placebo-controlled study. *Scand J Urol* 2015;49:329–33.
- [20] Rosen RC, Allen KR, Ni X, Araujo AB. Minimal clinically important differences in the erectile function domain of the International Index of Erectile Function scale. *Eur Urol* 2011;60:1010–6.
- [21] Goertz O, Lauer H, Hirsch T, et al. Extracorporeal shock waves improve angiogenesis after full thickness burn. *Burns* 2012;38: 1010–8.
- [22] Abe Y, Ito K, Hao K, et al. Extracorporeal low-energy shock-wave therapy exerts anti-inflammatory effects in a rat model of acute myocardial infarction. *Circ J* 2014;78:2915–25.
- [23] Tara S, Miyamoto M, Takagi G, et al. Low-energy extracorporeal shock wave therapy improves microcirculation blood flow of ischemic limbs in patients with peripheral arterial disease: pilot study. *J Nippon Med Sch* 2014;81:19–27.
- [24] Ioppolo F, Rompe JD, Furia JP, Cacchio A. Clinical application of shock wave therapy (SWT) in musculoskeletal disorders. *Eur J Phys Rehabil Med* 2014;50:217–30.
- [25] Kim JH, Kim JY, Choi CM, et al. The dose-related effects of extracorporeal shock wave therapy for knee osteoarthritis. *Ann Rehabil Med* 2015;39:616–23.
- [26] Delius M, Denk R, Berding C, Liebich HG, Jordan M, Brendel W. Biological effects of shock waves: cavitation by shock waves in piglet liver. *Ultrasound Med Biol* 1990;16:467–72.
- [27] Li H, Matheu MP, Sun F, et al. Low-energy shock wave therapy ameliorates erectile dysfunction in a pelvic neurovascular injuries rat model. *J Sex Med* 2016;13:22–32.
- [28] Qiu X, Lin G, Xin Z, et al. Effects of low-energy shockwave therapy on the erectile function and tissue of a diabetic rat model. *J Sex Med* 2013;10:738–46.
- [29] Liu J, Zhou F, Li GY, et al. Evaluation of the effect of different doses of low energy shock wave therapy on the erectile function of streptozotocin (STZ)-induced diabetic rats. *Int J Mol Sci* 2013;14:10661–73.
- [30] Mense S, Hoheisel U. Shock wave treatment improves nerve regeneration in the rat. *Muscle Nerve* 2013;47:702–10.
- [31] Gruenwald I, Shenfeld O, Chen J, et al. Positive effect of counseling and dose adjustment in patients with erectile dysfunction who failed treatment with sildenafil. *Eur Urol* 2006;50:134–40.

SEXUAL MEDICINE

Twelve-Month Efficacy and Safety of Low-Intensity Shockwave Therapy for Erectile Dysfunction in Patients Who Do Not Respond to Phosphodiesterase Type 5 Inhibitors

Amado Bechara, MD, PhD, Adolfo Casabé, MD, Walter De Bonis, MD, and Pablo Gomez Ciciclia, MD

ABSTRACT

Introduction: Low-intensity shockwave therapy (LISWT) has recently emerged as a promising method in the treatment of erectile dysfunction (ED).

Aim: To assess the long-term results of the effectiveness and safety of LISWT in patients with ED who are non-responders to phosphodiesterase type 5 inhibitor (PDE5i) treatment.

Methods: This open-label, longitudinal, and observational study investigated an uncontrolled population of 50 consecutive patients whose ED was unresponsive to PDE5i treatment. Patients were treated with a four-session LISWT protocol. During active treatment and follow-up, all patients remained on their regular high on-demand or once-daily PDE5i dosing schedules.

Main Outcome Measures: Effectiveness was assessed according to the International Index of Erectile Function erectile function domain, questions 2 and 3 of the Sexual Encounter Profile, Erection Hardness Scale, and Global Assessment Question scores at baseline and at 3, 6, 9, and 12 months after treatment. Patients were considered responders whenever they showed improvement in erection parameters in all four assessments and responded positively to the Global Assessment Question. Adverse events were recorded. Statistical variables were applied and findings were considered statistically significant at a *P* value less than $< .05$.

Results: Eighty percent (mean age 64.8 years) completed the 12-month follow-up. Positive response rates were 60% of available subjects at the end of the study and 48% of the intent-to-treat population. After the

12-month follow-up, 91.7% of responders maintained their responses. No patient reported treatment-related adverse events.

Conclusion: LISWT in patients with ED unresponsive to PDE5i treatment was effective and safe in 60% of patients treated. The efficacy response was maintained for 12 months in most patients.

Sex Med 2016;:e1008. Copyright © 2016, The Authors. Published by Elsevier Inc. on behalf of the International Society for Sexual Medicine. This is an open access article under the CC BY-NC-ND license (<http://creativecommons.org/licenses/by-nc-nd/4.0/>).

Key Words: Low-Intensity Extracorporeal Shockwave Therapy; Erectile Dysfunction; Phosphodiesterase Type 5 Inhibitor

INTRODUCTION

Erectile dysfunction (ED) is a medical entity that is highly prevalent in men older than 50 years whose history of vascular risk factors (VRFs) has been a common denominator in the origin of this symptom.¹

Received March 25, 2016. Accepted June 5, 2016. Instituto Medico Especializado, Buenos Aires, Argentina

Copyright © 2016, The Authors. Published by Elsevier Inc. on behalf of the International Society for Sexual Medicine. This is an open access article under the CC BY-NC-ND license (<http://creativecommons.org/licenses/by-nc-nd/4.0/>).
<http://dx.doi.org/10.1016/j.esxm.2016.06.001>

Many studies have stressed the status of ED as a potential indicator of cardiovascular disease, although other clinical trials have found a high incidence of ED in men with VRFs such as metabolic syndrome, diabetes, and hypertension.^{2,3}

Since 1998, the phosphodiesterase type 5 inhibitor (PDE5i) has introduced a change in the treatment paradigm for patients with ED because approximately 60% of patients can recover their erectile function and lead a satisfactory sex life.⁴

Despite the effectiveness of PDE5i in the treatment of ED, 40% to 50% of patients—depending on the etiology of the dysfunction—do not respond to this drug therapy, even after optimization approaches such as treatment combinations have been implemented.^{5e10}

For some years, low-intensity shockwave therapy (LISWT) has been implemented for the treatment of ED and to optimize the response to PDE5i.

A shockwave is a wave of abrupt pressure (vibration movement) produced by an object that travels faster than the speed of sound (<10 ns) producing external pressure differences and increased temperature.¹¹

Since the 1980s, shockwaves of different intensities have been used therapeutically in medicine. High-intensity shockwaves (pressure ¼450 bar) have been implemented in the treatment of urolithiasis, medium-intensity shockwaves (pressure ¼200 bar) in the treatment of arthralgia, tendinitis, and bursitis, and more recently LISWT (pressure ¼80 bar) in the treatment of ED.

Young and Dyson¹² discovered that therapeutic ultrasound encourages angiogenesis by enhancing the expression of vascular endothelial growth factor. Nurzynska et al¹³ reported that shockwaves have a positive influence on the proliferation and differentiation of cardiomyocytes, smooth muscle, and endothelial cell precursors, with a more obvious effect in cells from a normal heart than from a pathologic heart.

After these initial reports, LISWT was implemented in the treatment of chronic myocardial ischemia and diabetic foot ulcers, among other applications.^{14e18}

The idea of applying LISWT to the penis stemmed from a study with animals that proved that the energy of shockwaves applied to the myocardium of pigs ameliorates ischemia-induced myocardial dysfunction.¹⁴ By extrapolating these findings to ED, it was presumed that shockwaves applied to the penis might increase blood flow and improve endothelial function through the stimulation of angiogenesis in the corpus cavernosum.

The mechanism of action is still not completely elucidated. However, low-intensity energy has been shown to induce the production of a physiologically significant amount of non-enzymatic nitric oxide and activate intracellular cascade pathways that trigger the release of angiogenic factors.¹⁹

In this way, shockwaves produce mechanic stress and micro-trauma at the cellular level, thus generating a series of biological cascades that favor the release of angiogenic factors leading to neovascularization.

In vivo and in vitro evidences have proved that shockwaves enhance the expression of growth factors related to angiogenesis, increase mRNA and vascular endothelial growth factor cellular levels and its

receptor, Flt-1, and induce neovascularization, increase blood supply, and significantly increase angiogenic markers.^{14e17}

In that regard, Qiu et al²⁰ found that shockwave therapy significantly restored erectile function in rats with streptozotocin- induced diabetes mellitus to levels similar to those exhibited by healthy controls, thus validating the animal model as comparable to prior clinical trials performed in humans. According to trial results, improvements in erectile function might be attributable to the positive effects afforded by the shockwaves on endothelial and smooth muscle regeneration in the penis. These effects appear to be mediated by the recruitment of endogenous smooth muscle cells.

Interestingly, the results recently published by Assaly- Kaddoum et al²¹ showed that LISWT significantly improved erectile function in Goto-Kakizaki rats to the same extent as sildenafil. Furthermore, the effects of LISWT were potentiated with sildenafil. Nevertheless, this was not mediated by a mechanism dependent on nitric oxide and cyclic guanosine monophosphate and the investigators encouraged further investigation of the mechanism of action of these devices.

The first observation studies in patients who responded poorly to PDE5i therapy reported on the efficacy and safety of LISWT devices, especially in patients with ED of vascular origin and in those with a poor response to PDE5i treatment.^{22,23}

Recently, Kitrey et al²⁴ performed a sham-controlled evaluation of penile LISWT effect in 58 patients unable to achieve sexual intercourse using a PDE5i. In the LISWT and sham groups, 54.1% and 0% of patients, respectively, achieved an erection hard enough for vaginal penetration. According to changes in the International Index of Erectile Function erectile function domain (IIEF-EF) score, treatment was effective in 40.5% of men who received LISWT but in none in the sham group.

AIM

Based on these findings, the aim of this study was to assess the effectiveness and safety of LISWT after 12 months in the treatment of ED in patients with a history of vascular disease or associated VRFs with a low response to PDE5i treatment.

METHODS

This study was an open-label, longitudinal, observational, and independent study designed to evaluate the safety and efficacy of LISWT in an uncontrolled population of sexually active men with ED unresponsive to PDE5i treatment and associated VRFs.

This study consisted of a screening phase, a treatment phase, and a 12-month follow-up phase. At the screening phase, patients had an extensive medical and sexological history evaluation and a physical examination.

The inclusion criteria involved sexually active men with ED that was unresponsive to PDE5i treatment and exhibited VRFs (eg, diabetes, hypertension, dyslipidemia, and coronary artery disease). Patients with untreated hypogonadism or a history of pelvic surgery and patients with ED of neurologic origin (resulting from prostatectomy, pelvic surgery, or spinal cord injury) were excluded.

Patients were considered non-responders to PDE5i if they, after completing all optimization measures commonly suggested (correct dose optimization of PDE5i, correction of risk factors, improvement in sexual stimuli, and correction of testosterone levels, and proper patient dietary training, especially with the use of short-acting PDE5i), had an IIEF-EF score lower than 26 points when using these drugs.^{10,11}

Fifty consecutive patients with ED fulfilled the inclusion criteria and accepted the invitation to participate. During LISWT and follow-up, these patients continued with PDE5i treatment at the maximum dose or with a daily dose under the same treatment protocol. Only those patients who completed the 12-month follow-up were considered for result analysis.

Severity of ED was classified into five categories according to the IIEF-EF score.²⁵

The following evaluation criteria were used: IIEF-EF to assess ED severity, questions 2 and 3 from the Sexual Encounter Profile (SEP2 and SEP3) to assess penetration and erection sustain- ability, the Erection Hardness Score (EHS), and a Global Assessment Question (GAQ): Has the treatment improved the quality of your erections?^{26e29}

Improvement of the IIEF-EF score was defined as an increase from baseline to follow-up (12 months after treatment) according to the minimal clinically differences suggested by Rosen et al.³⁰

The criterion for treatment success according to the EHS was a score of 3 or 4. Assessment measurements were taken face to face before treatment and 3, 6, 9, and 12 months after LISWT completion (Figure 1).

Patients were considered responders to LISWT whenever they showed improvement in erection parameters in all four assess- ments (IIEF-EF, SEP2, SEP3, and EHS) and responded positively to the GAQ at 3, 6, 9, and 12 months after treatment. Adverse events were recorded.

This trial was performed using Renova NR, an extracorporeal LISWT device (Direx Argentina, Buenos Aires, Argentina). This equipment uses linear shockwaves and, unlike previous models, spans the entire area of the organ (up to 70 mm) and thus can apply shockwaves with greater precision at the penile crura and corpus cavernosum.³¹

The subjects started the treatment right after inclusion in the study because they continued their respective current PDE5i therapies.

According to previously published studies, the treatment consisted of applying 14,400 shockwaves during a period of 4 weeks. In each session, the patient received 3,600 shockwaves of 0.09 mJ/mm²: 1,800 were applied to the penis (900 to each corpus cavernosum) and 1,800 were applied to the perineum (900 to each crus). The areas that received treatment were the same at each session. All sessions were performed without anesthesia in an outpatient setting and each lasted 20 minutes.³¹

The study was conducted according to Good Clinical Practices and the Declaration of Helsinki, it was approved by the local research ethics committee, and all patients signed an informed consent form.

Variables of demographic characteristics of responders and non- responders were calculated using the Mann-Whitney test and Fisher exact test. Efficacy variables were assessed using the Friedman test, and individual comparisons were assessed with the Bonferroni- Dunn method. Statistical variables were applied and findings were considered statistically significant at a *P* value less than .05.

Main Outcome Measures

Effectiveness was assessed using the IIEF-EF, SEP2 and SEP3 diaries, EHS, and GAQ at baseline and at 3, 6, 9, and 12 months after treatment.

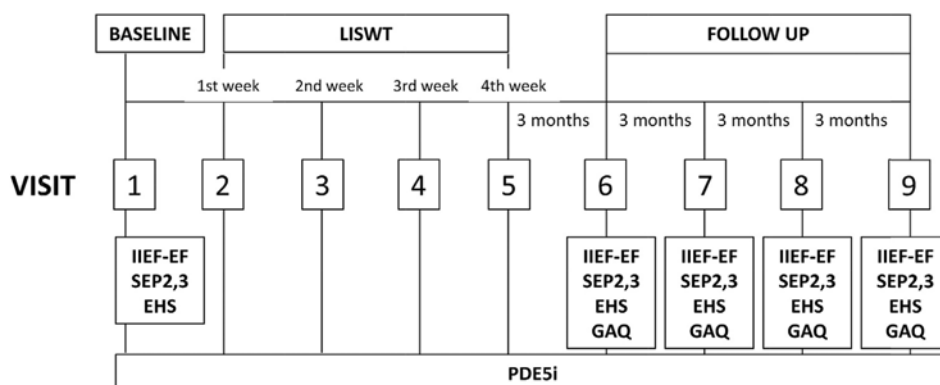


Figure 1. Study flowchart. EHS ¼Erection Hardness Scale; GAQ ¼Global Assessment Question; IIEF-EF ¼International Index of Erectile Function erectile function domain; LISWT ¼low-intensity shockwave therapy; SEP2 and 3 ¼questions 2 and 3 of Sexual Encounter Profile.

RESULTS

Eighty percent of patients (40 of 50) completed the treatment and 12-month follow-up. Ten patients with similar demographic characteristics were excluded from the study because of loss to the first follow-up.

Median age was 64.8 years and duration of ED was 70.5 months.

Table 1. Demographic characteristics of patients (responders and non-responders to low-intensity shockwave therapy)

	Responders (n =24)	Non-responders (n =16)	P value
Age (y), mean (range)	65 (50e82)	64.4 (48e82)	.8902*
Duration of ED (mo)	64.4	77.8	.4385*
Range (mo)	12e132	8e120	
Vascular risk factors, n (%)			
Hypertension	14 (58.3)	11 (68.8)	.7397†
Diabetes mellitus	3 (12.5)	7 (43.8)	.0588†
Dyslipidemia	11 (45.8)	9 (56.3)	.7475†
Coronary artery disease	10 (41.7)	7 (43.8)	.9999†
Severity of ED according to IIEF, n (%)			
Severe	4 (16.7)	6 (37.5)	.1592†
Moderate	12 (50)	4 (25)	.1881†
Mild to moderate	4 (16.7)	4 (25)	.6905†
Mild	4 (16.7)	2 (12.5)	.9999†

ED = erectile dysfunction; IIEF = International index of Erectile Dysfunction. *Mann-Whitney test. †Fisher exact test.

The positive response rate was 60% of available subjects at the end of the study and 48% of the intent-to-treat population.

Sixty percent of patients (24 of 40) showed improvement in efficacy parameters in all four assessments (IIEF-EF, SEP2, SEP3, and EHS) and responded positively to the GAQ. These changes were significant from the first follow-up (3 months after treatment).

By the third month after treatment, 91.7% of responders to LISWT (22 of 24) maintained efficacy parameters up to the last follow-up visit 12 months after treatment.

No statistically significant difference was found for age, duration of ED, comorbidities, and dysfunction severity when comparing responders to LISWT (24 of 40) with non-responders to LISWT (16 of 40; [Table 1](#)).

In responders to LISWT, the increase in results obtained through the IIEF-EF score was statistically significant from the 3-month assessment after treatment, reaching a mean of 9.3 points and of 9.1 points by 12 months after treatment ([Figure 2](#)).

From 3 months after treatment to the end of follow-up monitoring, significant changes were encountered in the responder group for the EHS and SEP2 and SEP3, with a response rate of almost 80% of attempts ([Figure 2](#)).

Improvements in the IIEF-EF score were higher whenever ED was more severe, with changes of 13, 10.5, 6.8, and 4.5 points for patients with severe, moderate, mild to moderate and mild ED, respectively ([Table 2](#)).

Thirteen patients reached a score of at least 26 points in the IIEF-EF score, and the degree of severity decreased in nine and remained unchanged in two.

DISCUSSION

This study evaluated a group of patients with ED and associated VFRs who responded poorly to PDE5i therapy in a 12-month pilot study. Erectile function was recovered in 60% of patients after treatment with linear-focused LISWT.

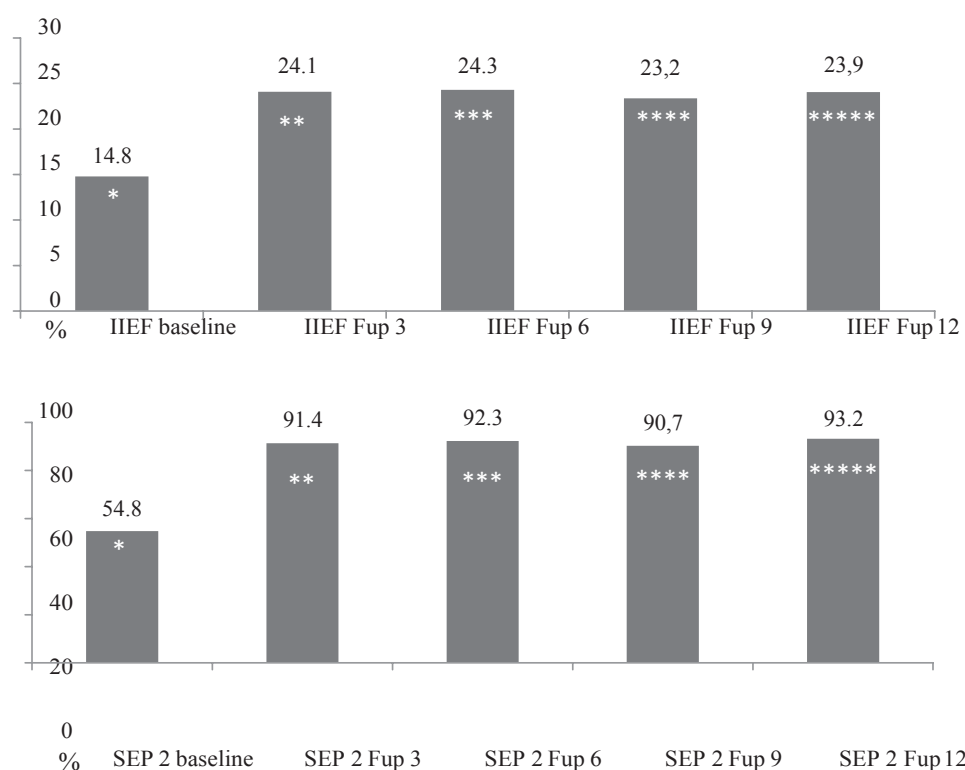
Most randomized, double-blinded, sham-control trials have reported the efficacy of LISWT in patients with ED.^{32e34}

Vardi et al³² presented the first randomized, double-blinded, sham-control trial that demonstrated that LISWT had a positive short-term clinical and physiologic effect on the erectile function of men who respond to oral PDE5i therapy. They found a significantly greater increase in the IIEF-EF score in the treated group than in the sham-treated group. In addition, physiologic penile hemodynamic significantly improved in the treated group but not in the sham group (maximal postischemic penile blood flow 148.2 vs 0.1 mL/[min \times dL], $P < .0001$) assessed using plethysmography.

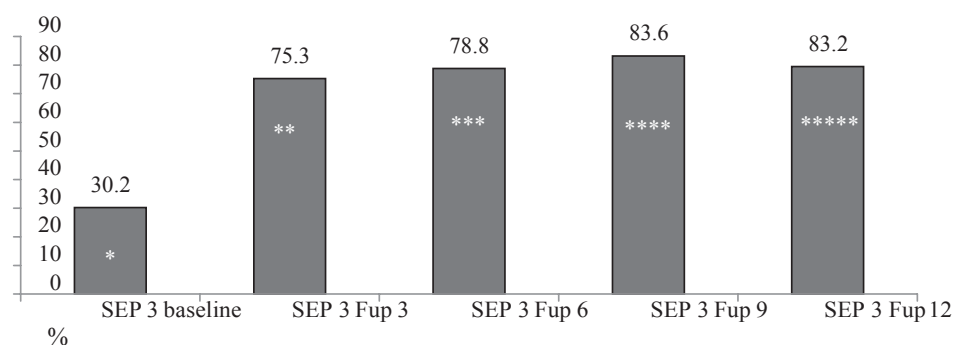
However, Yee et al,³³ using a similar treatment scheme to the one used in the study by Vardi et al³² and implementing the same shockwave therapy system (Omnispec ED1000; Medispec Ltd, Germantown, MD, USA), did not find significant statistical evidence in the IIEF score and EHS score in a group of 28 patients under LISWT treatment compared with a sham-treated group of 30 patients. Nevertheless, they found a significant difference in patients with severe ED according to the Sexual Health Inventory for Men and concluded that LISWT has clinical efficacy in this subgroup of patients.

More recently, Srini et al,³⁴ in a randomized double-blinded trial with active treatment and sham therapy, reported a positive long-term efficacy in patients with vasculogenic ED treated with linear-focused shockwaves, just as Vardi et al³² had (Omnispec ED1000).

In a narrative review of all published studies, Gruenwald et al³⁵ found that 60% to 75% of treated patients who responded to PDE5i therapy could eliminate their dependency on those drugs and achieve an erection and vaginal penetration and that 72% of non-responders to PDE5i before undergoing LISWT became responders and achieved vaginal penetration.



LSWT – CLINICAL DATA AND REPORTS



Friedman test: * vs **, *vs ***, * vs ****, * vs ***** $p < 0.05$

Figure 2. Evolution of changes in IIEF-EF score, SEP2, and SEP3 in responders to LISWT (n=24). $P < 0.05$ by Friedman test (*baseline vs **Fup 3, vs ***Fup 6, vs ****Fup 9, vs *****Fup 12). Fup 3 ¼3-month follow-up; Fup 6 ¼6-month follow-up; Fup 9 ¼9-month follow-up; Fup 12 ¼12-month follow-up; IIEF-EF ¼International Index of Erectile Function erectile function domain; SEP2 and 3 ¼questions 2 and 3 of the Sexual Encounter Profile.

These investigators used a compact electrohydraulic system fitted with a targeted shockwave source (Omnispec ED1000). Unlike the system used for the present patients, Gruenwald et al³⁵ had to stretch the penis and manually apply the transducer to it proximally, medially, and distally and then apply it to the peri-neum. With this operator-dependent method, the selected treatment protocol consisted of two sessions per week for a period of 3 weeks and was repeated after a treatment-free interval of 3 weeks.

Table 2. IIEF-6 changes according to severity of ED before and 12 months after treatment with shockwaves of low intensity

ED severity	n	Baseline IIEF-6 score, mean \pm SD	Follow-up 12-mo IIEF-6 score, mean \pm SD	IIEF-6 improvement points	P value
Severe	4	9 \pm 1.155	22 \pm 3.651	13	.029
Moderate	12	12.8 \pm 1.328	23.3 \pm 4.619	10.9	.0001
Mild to moderate	4	18.5 \pm 1.291	25.3 \pm 4.113	6.8	.002
Mild	4	22.8 \pm 0.500	26.3 \pm 4.193	4.5	.3429
Total	24	14.7 \pm 4.757	23.9 \pm 4.303	9.2	.0001

ED ¼ erectile dysfunction; IIEF-6 ¼ International index of Erectile Dysfunction.

Chung and Cartmill,³⁶ in an open-label prospective study of 30 patients with ED, assessed the efficacy and safety of an electromagnetic shockwave unit of higher energy density (0.25 mJ/mm²) previously used in the treatment of tenosynovitis and tendinitis (Duolith SD1 Ultra; Storz Medical AG, Tägerwil, Switzerland). Treatment duration consisted of two sessions per week for a period of 6 uninterrupted weeks. Sixty percent of patients showed an improved erectile response according to the IIEF-5 and the Erectile Dysfunction Inventory of Treatment Satisfaction index 6 weeks after treatment, and this effect remained for 4 months.

The present trial was performed using the Renova NR. Its design makes it operator independent: its transducer can deliver shockwaves after being secured to the penis and the perineum; thus, the operator does not need to hold the device. The transducer spans an area of 70 mm, which allows effective application to each corpus cavernosum. LISWT involves a very small amount of energy (0.09 mJ/mm²), equivalent to 10% of the energy used by conventional lithotripters for the treatment of urinary tract stones.

LSWT – CLINICAL DATA AND REPORTS

The efficacy of the Renova NR reported by other investigators was an average improvement of more than four points in the IIEF-EF score, thus going beyond the minimal important differences proposed by Rosen et al³⁰ to consider a treatment of ED effective.

Reisman et al,³¹ in a multicenter study with a larger number of patients and 6-month follow-up, reported 81% efficacy, whereas Ruffo et al³⁷ reported 76% efficacy in a group of 31 patients and 3-month follow up.

Currently, no available study has directly compared the efficacy of these three different LISWT methods. In the present study, improvements in IIEF-EF, SEP2, SEP3, and EHS scores became evident from the first through the third follow-ups after treatment, with statistically significant values that were maintained to the end of the follow-up phase in 90% of patients.

It is worth pointing out that, unlike what has been reported by other investigators, the present study considered a patient responsive to LISWT when he showed improvement in efficacy in all four assessments and responded positively to the GAQ and not just the IIEF score alone, which reinforces the result of this study. It is well known that changes in IIEF imply only an improvement in score but does not necessarily guarantee a patient's successful or complete sexual intercourse. In contrast, many men consult for the correction of erections insufficient for penetration, yet they are not fully satisfied. Sixty percent of the present patients achieved and maintained an erection after penetration, and they were satisfied with the improvement of their penile rigidity after treatment. This might better explain the lower efficacy compared with other studies.

Factors such as patient age and duration of ED did not influence the results.

An interesting aspect to consider is that patients continued their regular treatment and PDE5i drug throughout LISWT, thus eliminating the resulting bias of suspending and resuming oral treatment as described in other trials. Therefore, each patient was compared with himself before and after shockwave therapy concurrently with PDE5i treatment.

This study has several limitations that are important to consider. First, its lack of a placebo group prevents a proper comparison of the effects of LIWST. As mentioned earlier, other trials have shown significant differences between active and placebo treatments.^{24,32e34} Second, this research extended through a follow-up period of 12 months and sustained the patients' response; thus, there was no placebo treatment, which tends to be brief and not sustained over time, although this aspect has not been fully elucidated. Third, 10 patients were not included in the results owing to lack of follow-up. If one assumes that those 10 patients dropped out because of lack of response or were disappointed with the results, then this could constitute a serious bias when interpreting the results. If this were the case, then the response rate would be of 48% instead of 60%. This value seems more realistic given the weight of the results presented by Kitrey et al²⁴ who obtained approximately 50% recovery in non-responders to PDE5i therapy in a prospective, randomized, double-blinded, sham-controlled study. If the lack of placebo is considered an important bias, then it should be considered representative of a "real-life" setting.

In contrast, whenever independent pilot studies are conducted, the number of patients included tends to be small, and the results cannot be generalized. Nevertheless, however limited the data and the experiences reported in the literature thus far, one can consider these data quite promising.

There is no certainty that these improvements were due to the vascular changes suggested by other investigators because this study had an observational design of clinical practice; patients did not undergo any penile vascular study such as a Doppler evaluation that can show changes in the cavernosal arteries.

There are many uncertainties to LISWT: the published literature is not multicentric and usually has a small number of patients and short follow-up time. It is not clear whether the

LSWT – CLINICAL DATA AND REPORTS

number of sessions and treatments was sufficient. It does not define the best profile of patients who might benefit from this treatment. The mechanism of action is not clear.

Nevertheless, LISWT has a good safety profile, with no adverse events reported. The effectiveness in clinical and empirical practice is high. This new treatment modality seems promising to optimize treatments of ED, especially in patients with associated VRFs.

The main contribution of this study is adding more data using LISWT with only four sessions and a second-generation device in patients with ED unresponsive to PDE5i and associated VRFs followed for 1 year.

Despite the enthusiasm over these results, it is necessary to have a larger number of long-term multicentric placebo- controlled studies that can prove the efficacy and safety of this innovative treatment tool, thus avoiding false expectations and unnecessary medical expenses.

CONCLUSIONS

Extracorporeal LISWT in patients with ED unresponsive to PDE5i treatment was effective and safe in 60% of patients. The efficacy response was maintained for 12 months in most patients. Large-scale, multicentric, long-term, randomized, sham- controlled studies are needed to determine the benefits of this new line of treatment for ED.

Corresponding Author: Amado Bechara, MD, PhD, Instituto Medico Especializado, Hidalgo 568, Buenos Aires 1405, Argentina. Tel: 541-149-039-777; Fax: 541-149-039-777; E-mail: amado-bechara@gmail.com

amado-bechara@gmail.com

Conflict of Interest: The author reports no conflicts of interest.

Funding: None.

STATEMENT OF AUTHORSHIP

Category 1

(a) Conception and Design

Amado Bechara; Adolfo Casabé

(b) Acquisition of Data

Amado Bechara; Adolfo Casabé; Walter De Bonis; Pablo Gomez Cicilia

(c) Analysis and Interpretation of Data

Amado Bechara; Adolfo Casabé

Category 2

(a) Drafting the Article

Amado Bechara

(b) Revising It for Intellectual Content

Amado Bechara; Adolfo Casabé

Category 3

(a) Final Approval of the Completed Article

Amado Bechara; Adolfo Casabé; Walter De Bonis; Pablo Gomez Cicilia

REFERENCES

1. [Kloner R. Erectile dysfunction and cardiovascular risk factors. Urol Clin N Am 2005;32:397-402.](#)
2. [Gandaglia G, Briganti A, Jackson G, et al. A systematic review of the association between erectile dysfunction and](#)

LSWT – CLINICAL DATA AND REPORTS

cardio-vascular disease. *Eur Urol* 2014;65:968-978.

3. Seftel AD, Sun P, Swindle R. The prevalence of hypertension, hyperlipidemia, diabetes mellitus and depression in men with erectile dysfunction. *J Urol* 2004;171:2341-2345.
4. Eardley I, Donatucci C, Corbin J, et al. Pharmacotherapy for erectile dysfunction. *J Sex Med* 2010;7:524-540.
5. Gruenwald I, Shenfeld O, Chen J, et al. Positive effect of counseling and dose adjustment in patients with erectile dysfunction who failed treatment with sildenafil. *Eur Urol* 2006;50:134-140.
6. Hatzimouratidis K, Moysidis K, Bekos A, et al. Treatment strategy for “non-responders” to tadalafil and vardenafil: a real-life study. *Eur Urol* 2006;50:126-132.
7. Carvalho AA, Pereira NM, Maroco J, Vera F. Dropout in the treatment of erectile dysfunction with PDE5: a study on predictors and a qualitative analysis of reasons for discontinuation. *J Sex Med* 2012;9:2361-2369.
8. Sommer F, Engelmann U. Future options for combination therapy in the management of erectile dysfunction in older men. *Drugs Aging* 2004;21:555-564.
9. Dhir R, HCh Lin, Canfield SE, et al. Combination therapy for erectile dysfunction: an update review. *Asian J Androl* 2011; 13:382-390.
10. Hakim L, Van der Aa F, Bivalacqua TJ, et al. Emerging tools for erectile dysfunction: a role for regenerative medicine. *Nat Rev Urol* 2012;9:520-536.
11. Ciampa AR, de Prati AC, Amelio E, et al. Nitric oxide mediates anti-inflammatory action of extracorporeal shock waves. *FEBS Lett* 2005;579:6839-6845.
12. Young SR, Dyson M. The effect of therapeutic ultrasound on angiogenesis. *Ultrasound Med Biol* 1990; 16:261-269.
13. Nurzynska D, Di Meglio F, Castaldo C, et al. Shock waves activate in vitro cultured progenitors and precursors of cardiac cell lineages from the human heart. *Ultrasound Med Biol* 2008;34:334-342.
14. Nishida T, Shimokawa H, Oi K, et al. Extracorporeal cardiac shock wave therapy markedly ameliorates ischemia-induced myocardial dysfunction in pigs in vivo. *Circulation* 2004; 110:3055-3061.
15. Aicher A, Heeschen C, Sasaki K, et al. Low energy shock wave for enhancing recruitment of endothelial progenitor cells: a new modality to increase efficacy of cell therapy in chronic hind limb ischemia. *Circulation* 2006;114:2823-2830.
16. Kikuchi Y, Ito K, Ito Y, et al. Double-blind and placebo-controlled study of the effectiveness and safety of extracorporeal cardiac shock wave therapy for severe angina pectoris. *Circ J* 2010;74:589-591.
17. Wang CJ, Kuo YR, Wu RW, et al. Extracorporeal shockwave treatment for chronic diabetic foot ulcers. *J Surg Res* 2009; 152:96-103.
18. Dumfarth J, Zimpfer D, Vögele-Kadletz M, et al. Prophylactic low energy shock wave therapy improves wound healing after vein harvesting for coronary artery bypass graft surgery: a prospective, randomized trial. *Ann Thorac Surg* 2008; 86:1909-1913.
19. Gotte G, Amelio E, Russo S, et al. Short time non-enzymatic nitric oxide synthesis from L-arginine and hydrogen peroxide induced by shock waves treatment. *FEBS Lett* 2002; 520:153-155.
20. Qiu X, Lin G, Xin Z, et al. Effects of low-energy shockwave therapy on the erectile function and tissue of a diabetic rat model. *J Sex Med* 2013;10:738-746.
21. Assaly-Kaddoum R, Giuliano F, Laurin M, et al. Low intensity extracorporeal shockwave therapy (Li-ESWT) improves erectile function in a model of type II diabetes independently of NO/cGMP pathway. *J Urol*. <http://dx.doi.org/10.1016/j.juro.2016.03.147> [E-pub ahead of print].
22. Vardi Y, Appel B, Jacob G, et al. Can low-intensity extracorporeal shockwave therapy improve erectile function? A 6-month follow-up pilot study in patients with organic erectile dysfunction. *Eur Urol* 2010;58:243-248.
23. Gruenwald I, Appel B, Vardi Y. Low-intensity extracorporeal shock wave therapy—a novel effective treatment for erectile dysfunction in severe ED patients who respond poorly to PDE5 inhibitor therapy. *J Sex Med* 2012;9:259-264.
24. Kitrey ND, Gruenwald I, Appel B, et al. Penile low intensity shock wave treatment is able to shift pde5i nonresponders to responders: a double-blind, sham controlled study. *J Urol* 2016;195:1550-1555.
25. Cappelleri J, Rosen R, Smith M, et al. Diagnostic evaluation of the erectile function domain of the International Index of Erectile Function. *Urology* 1999;54:346-351.
26. McMahon C, Smith C, Shabsigh R. Treating erectile dysfunction when PDE5 inhibitors fail. *BMJ* 2006;332:589-592.
27. Rosen RC, Cappelleri JC, Gendrano N III. The International Index of Erectile Function (IIEF): a state-of-the-science review. *Int J Impot Res* 2002;14:226-244.
28. Porst H, Vardi Y, Akkus E, et al. Standards for clinical trials in male sexual dysfunctions. In: Montorsi F, Basson

LSWT – CLINICAL DATA AND REPORTS

- R, Adaikan G, et al., eds. Sexual medicine sexual dysfunctions in men and women. Third international consultation on sexual medicine. Paris: Health Publication Ltd.; 2010. p. 567-603; Available at: <http://www.icud.info/PDFs/SEXUAL-MEDICINE-2 010.pdf>.
29. Mulhall JP, Goldstein I, Bushmakin AG, et al. Validation of the Erection Hardness Score. *J Sex Med* 2007;4:1626-1634.
 30. Rosen RC, Allen KR, Ni X, et al. Minimal clinically important differences in the erectile function domain of the International Index of Erectile Function scale. *Eur Urol* 2011;60:1010-1016.
 31. Reisman Y, Hind A, Varanekas A, et al. Initial experience with linear focused shockwave treatment for erectile dysfunction: a 6-month follow-up pilot study. *Int J Impot Res* 2015;27:108- 112.
 32. Vardi Y, Appel B, Kilchevsky A, et al. Does low intensity extra- corporeal shock wave therapy have a physiological effect on erectile function? Short-term results of a randomized, double- blind, sham controlled study. *J Urol* 2012;187:1769-1775.
 33. Yee C, Chan E, Hou SM, et al. Extracorporeal shock wave therapy in the treatment of erectile function. A prospective, randomized, double-blinded, placebo, controlled study. *Int J Urol* 2014;21:1041-1045.
 34. Srimi VS, Reddy RK, Shultz T, et al. Low intensity extracor- poreal shockwave therapy for erectile dysfunction: a study in an Indian population. *Can J Urol* 2015;22:7614-7622.
 35. Gruenwald IE, Kitey N, Appel B, et al. Low intensity shock wave therapy in vascular disease and erectile dysfunction: theory and outcomes. *Sex Med Rev* 2013;1:83-90.
 36. Chung E, Cartmill R. Evaluation of clinical efficacy, safety and patient satisfaction rate after low-intensity extracorporeal shockwave therapy for the treatment of male erectile dysfunction: an Australian first open-label single-arm pro- spective clinical trial. *BJU Int* 2015;115(Suppl. 5):46-49.
 37. Ruffo A, Capece M, Prezioso D, et al. Safety and efficacy of low intensity shockwave (LISW) treatment in patients with erectile dysfunction. *Int Braz J Urol* 2015;41:967-974

inhibitors (PDE5-i) in the late 1990s and early 2000s completely revolutionized the field of sexual medicine becoming the most popular treatment and the first-line monotherapy for ED (3).

Unfortunately, they are limited for being used before the sexual act and do not modify the physiologic mechanism of penile erection (4).

After the initial enthusiasm of the use of the PDEi, the psychological impact-artificiality of erections and planning for sexual intercourse as well as a not proven curative effect (5) have slightly limited the use of these drugs, leaving the field open to the development of new therapies to treat or maybe cure patients with ED. Furthermore, the frequently reported side-effects of PDE5i, such as headache, dyspepsia, muscular pains, and hot flushes can affect a normal sexual intercourse (6).

The primary goal in the management strategy of a patient with ED would be to determine its etiology and cure when possible, and not just the treatment of symptoms. One of the new therapeutic strategies is the use of low intensity extracorporeal shockwave (LISW) therapy.

Shockwaves (SWs) are longitudinal acoustic waves that travel in the speed of water in ultrasound through body tissue and that carry energy (7). SWs have been widely used in urology to treat urinary stone disease (8), and less often in Peyronie's disease (9) or chronic pelvic pain syndrome (CPPS) in males (10).

The mechanism of action of low-intensity shock waves (LISW) is still not very clear. Many authors suggested that LISW improves erectile function increasing cavernous blood flow and inducing a neovascularization (11). Neovascularization is promoted

by the expression of angiogenesis-related growth factors, such as endothelial nitric oxide synthase (NOS), vascular endothelial growth factor (VEGF), and endothelial cell proliferation factors, e.g., proliferating cell nuclear antigen (PCNA) (12).

The aim of our study is to evaluate the improvement of erectile function after therapy with LISW in men affected by mild to moderate ED.

MATERIALS AND METHODS

Study population

31 patients between February and June 2013 with mild to severe ED, and non-Phosphodiesterase 5 inhibitors responders were assessed for this study. Only 2 (6.4%) underwent treatment with PDE5-i in the last four weeks before starting the treatment (Table-1). They all signed an informed consent.

Inclusion criteria were: good general health, ED for at least six months, IIEF-EF between 7 to 24 (=mild to moderate).

Exclusion criteria included: neurological pathology, past radical prostatectomy or extensive pelvic surgery, recovering from cancer during the last year, any unstable medical, psychiatric disorder, spinal cord injury, penile anatomical abnormalities, clinically significant chronic hematological disease, anti-androgens or radiotherapy treatment of the pelvic region.

The medical and psychosexual history of all patients were evaluated at baseline to detect comorbidities. Table-2 summarizes the patients' organic comorbidities: cardiovascular diseases in 7 pts (22%), hypertension in 18 pts (58%), diabetes in 12 pts (38%) and abnormal total serum cholesterol in 13 pts (41%).

Table 1 - The pretreatment characteristics of population.

Variable	Patients	P value
Age (years)		0.39
Mean±SD	59.93±12.16	
N.of subjects analysed	31	
Time suffering from ED (yrs)		0.50
Mean±SD	3.66±4.57	
N.of subjects analysed	31	
Treatment with PDE5-I in the last 4 weeks (%)	6.45	0.12
Proportion	2/31	

Table 2 - Analysis of self-reported measures at baseline , 1-month and 3-month follow up by treatment cohort.

Variable	Baseline	Follow-up 1 month	p value	Follow-up 3 months	P value
IIEF – EF	16.54±6.35	21.13±6.31	P=0.0075	21.03±6.38	p=0.0096
SEP-Q₂ (%)	61 (yes)	86 (yes)	P=0.0292	89 (yes)	P=0.0112
	38 (no)	13 (no)		10 (no)	
		2 drop-out			
SEP-Q₃ (%)	32 (yes)	58 (yes)	P=0.0402	62 (yes)	P=0.0207
	67 (no)	41 (no)		37 (no)	
		2 drop-out			

(IIEF-EF): International Index of Erectile Function; (SEP-Q2): Sexual Encounter Profile-Q2; (SEP-Q3): Sexual Encounter Profile-Q3

Study design

This is a pilot clinical study evaluating safety and efficacy of LISW treatment (performed with Renova[®]) on symptomatic ED patients versus baseline.

Study schedule

a) screening

Patients were visited (visit 1) and those who were using PDE5-i had to go to a flush-out period of three weeks before starting the treatment. Furthermore, they committed to refrain from usage of PDE5-i during the duration of the treatment session.

b) Treatment

Patients underwent four weekly treatment sessions. During each session 3600 shocks at 0.09 mJ/mm² were given. Shocks were applied at the penis shaft at right corpus cavernosum and left corpus cavernosum, right crus and left crus, 900 shocks at each area.

The treatment areas were the same for every session, so that at the end of the full treatment (four sessions) each area received 3600 shocks at an average 0.09mJ/mm. We used this protocol under the guidance of Direx Group LTD.

LISW utilize low energy-0.09mJ/mm²-equivalent to 10% of the energy used by conventional kidney stone lithotripters in the treatment of urinary tract stones. This device generates a low intensity shockwave focused along a line of 70mm and hence is able to apply shockwaves to the corpora cavernosa and crura effectively.

For the past 3 years, a similar LISW technique has been used in different sites using the same level of energy density to treat ED (13). Shockwaves are created by a special generator and are focused using a specially designed shockwave applicator apparatus. The shockwaves are delivered through the applicator covering the entire corpora cavernosa of the penis.

The treatment does not inflict pain and does not require any anesthesia or sedation.

Each session lasts approximately 30 minutes.

c) Primary efficacy objective

To evaluate the increase of number of points in the International Index of Erectile Function (IIEF-EF) questionnaire from baseline (visit 1) to 1 and 3 months after treatment regarding the severity of the symptoms according to minimal clinically important differences in the erectile function domain of the IIEF scale (14). The IIEF-EF was chosen as primary clinical efficacy assessment tool in this study. It has been reported to be brief and reliable, psychometrically sound, and easy to administer in both research and clinical settings. It is available (and cross-culturally validated) in 10 languages and demonstrates adequate sensitivity and specificity for detecting treatment-related changes in erectile function (15).

d) Secondary efficacy objective

To study the clinical efficacy of LISW in terms of improvement in sexual activity leading to optimal penetration at 1 and 3 months post-treatment by using the Sexual Encounter Profile

(SEP) diaries (SEP-Questions 2 and 3). Patients recorded efficacy information after each sexual encounter by answering the two yes/no questions of the test: SEP Question 2: “Were you able to insert your penis into your partner’s vagina?” and SEP Question 3: “Did your erection last long enough for you to have successful intercourse?”.

In addition, patients underwent further evaluation with the Global Assessment Question (GAQ) by answering the two yes/no questions of the test: (GAQ-Q1) “Over the past four weeks has the treatment you have been taking improved your erectile function?” and (GAQ-Q2) “If yes, has the treatment improved your ability to engage in sexual activity over the past four weeks”.

Statistical analysis

Statistical analysis was performed by the program Statistical Package for Social Sciences for Windows, version 11.5.1 (SPSS Inc., Chicago, IL, USA), using χ^2 test and T-student for categorical data comparisons.

RESULTS

All patients had mild to severe ED at least six months, were non PDE-5i responders, with a mean age of 59.93 ± 12.16 years. Median

follow-up was of 3 months (range 2-5 months). Global patient perceptions after treatment with LISW significantly improved. Indeed IIEF-EF score showed significant improvement (baseline 16.54 ± 6.35 vs 21.13 ± 6.31 after 1 month $P=0.0075$; baseline 16.54 ± 6.35 vs 21.03 ± 6.38 after 3 months $p=0.0096$) (Table-2; Figure 1-3). About 86% ($P=0.0292$) and 89% ($P=0.0112$) of patients answered with a positive answer to SEP Q2 question (“Were you able to insert your penis into your partner’s vagina?”) 1 month and 3 months after treatment, respectively, versus 61% positive answers pre-treatment (Table-2). SEP Q3 question (“Did your erection last long enough for you to have successful intercourse?”) was answered positively by 58% ($P=0.0402$) 1 month after LISW treatment and 62% ($P=0.0207$) after 3 months. After 1 month of treatment there were two drop-outs (Table-2). Table-3 shows patients’ satisfactions of treatment with GAQ-Q1 (“Over the past four weeks has the treatment you have been taking improved your erectile function?”) and GAQ-Q2 questions (“If yes, has the treatment improved your ability to engage in sexual activity over the past four weeks”). Regarding the individual answers for the GAQ questions, we noticed that 89% and 62% of patients at 1 and 3 months respectively answered “Yes” to the GAQ-Q1 while in the same period 79% and 76% of patients answered “Yes” to the

Figure 1 - IIEF-EF score at baseline and after 1 month follow-up

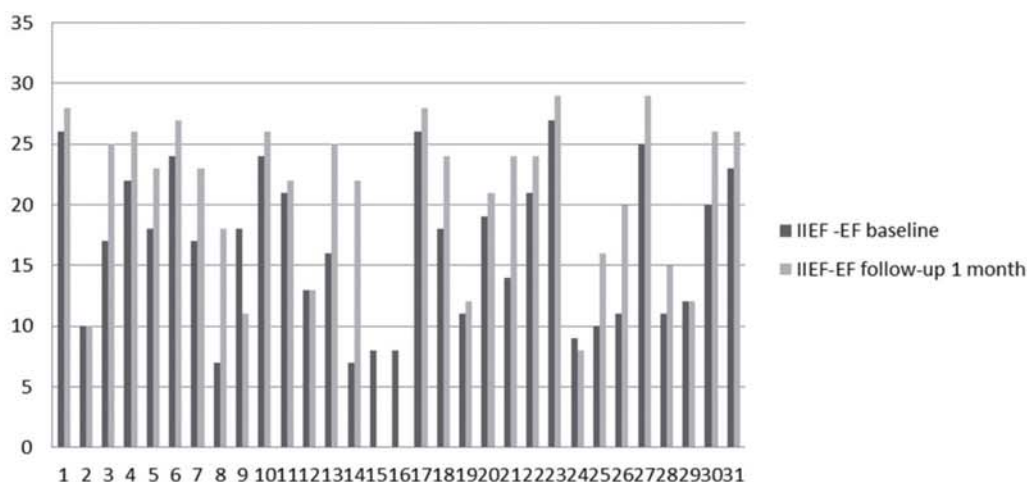


Figure 2 - IIEF-5 score at baseline and after 3 month follow-up

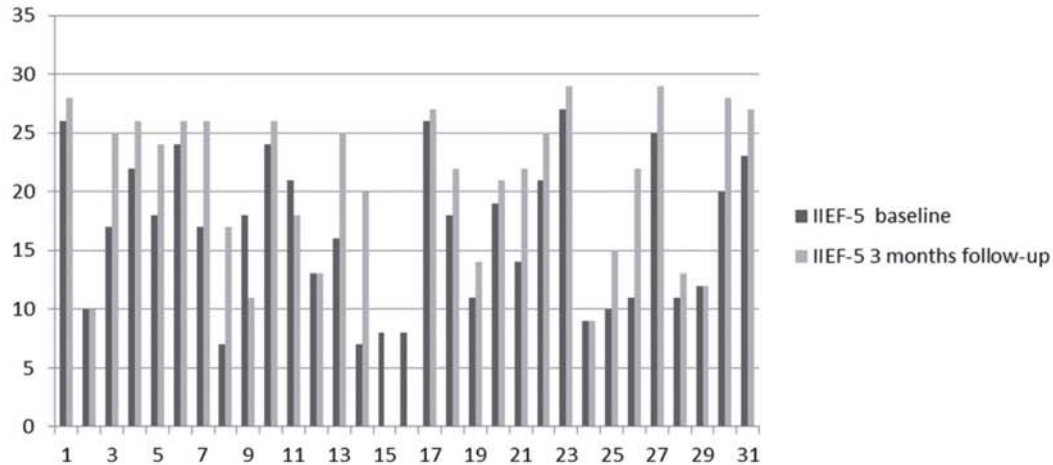
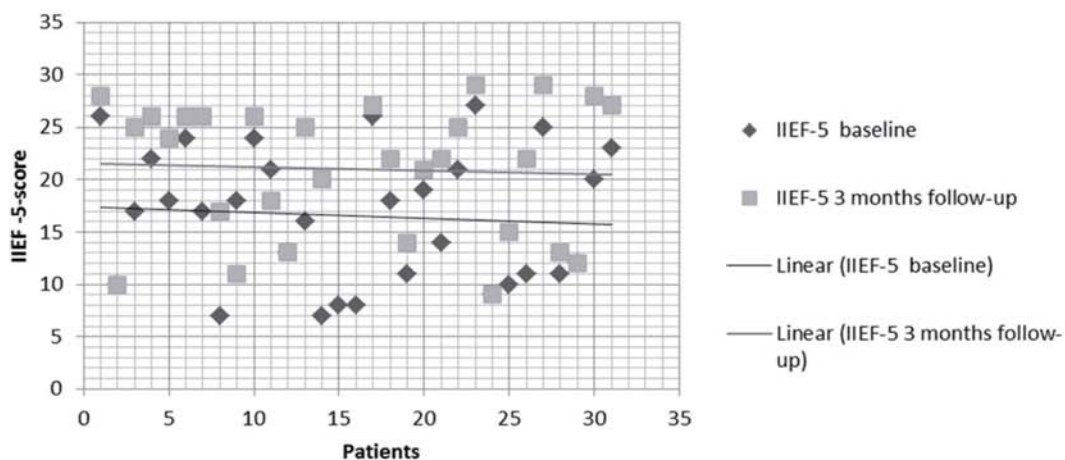


Figure 3 - Dispersion date IIEF score baseline and 3 month follow-up



GAQ-Q2 demonstrating success with the treatment (Table-3).

No adverse events were reported during and following treatment.

DISCUSSION

According to others author's data LISW appears to be significantly effective for increasing erectile function thanks to the improvement in

penile hemodynamics (13, 11). By releasing neo-angiogenic factors and subsequent neovascularization of the treated tissue, LISW therapy leads to tissue regeneration (16). In fact, it has been shown that this low intensity energy acts on vascularization inducing a non-enzymatic production of physiologic amounts of nitric oxide (17). Nitric oxide (NO), the smallest known signaling molecule, is produced by three isoforms of NO synthase (NOS; EC 1.14.13.39). Neuronal NOS (nNOS, NOS 1) is

LSWT – CLINICAL DATA AND REPORTS

Table 3 - Analysis of self-reported measures at 1-month and 3-month follow up by treatment cohort.

Variable	Follow-up 1 Month	Follow-up 3 Month	P value
GAQ-Q ₁ (%)	89 (yes)	62 (yes)	P=0.141
	10 (no)	38 (no)	
	2 droup-out	2 droup-out	
GAQ-Q ₂ (%)	79 (yes)	76 (yes)	P=0.7259
	20 (no)	24 (no)	
	2 droup-out	2 droup-out	

(GAQ-Q1): Global Assessment Question- Q1; (GAQ-Q2): Global Assessment Question- Q2

constitutively expressed in central and peripheral neurons and in some other cell types. Its functions include synaptic plasticity in the central nervous system (CNS), central regulation of blood pressure, smooth muscle relaxation, and vasodilatation via peripheral nitrenergic nerves. Nitrenergic nerves are of particular importance in the relaxation of corpus cavernosum and penile erection (18). In corpus cavernosum nNos-derived NO activates guanylyl cyclase which synthesizes cyclic GMP (cGMP) from GTP which in turn is the basis for the pro-erectile function of PDE5 inhibitors (19).

The most important isoform is eNOS, which keeps blood vessels dilated, controls blood pressure, and has numerous other vasoprotective and anti-atherosclerotic effects inhibiting DNA synthesis, mitogenesis, and proliferation of vascular smooth muscle cells as well as smooth muscle cell migration. eNOS is mostly expressed in endothelial cells and synthesizes NO in a pulsatile manner (20).

eNOS appears to be a homeostatic regulator of numerous essential cardiovascular functions: in fact, eNOS-derived NO causes vasodilation in all types of blood vessels by stimulating soluble guanylyl cyclase and increasing cyclic GMP in smooth muscle cells that regulates the activity of calcium channels as well as intracellular contractile proteins that affect the relaxation of corpus cavernosum smooth muscle (21). Qiu et al. reported that LISW can partially ameliorate Diabetes Mellitus (DM)-associated ED in rat model by promoting regeneration of nNOS-positive ner-

ves, endothelium, and smooth muscle in the penis. These beneficial effects appear to be mediated by recruitment of endogenous mesenchymal stem cells (MSCs) (22). Wang and colleagues discovered that LISW stimulates the expression of angiogenesis-related growth factors, such as endothelial nitric oxide synthase (eNOS) and vascular endothelial growth factor (VEGF), and endothelial cell proliferation factors, such as proliferating cell nuclear antigen (PCNA).

The eNOS and VEGF began to rise in as early as one week and remained high for 8 weeks, then declined to baseline in 12 weeks; whereas the increase of PCNA and neo-vessels began in 1 week and persisted for 12 weeks and longer (12).

The effect of LISW on intracellular VEGF levels in human umbilical vein endothelial cells (HUVECs) has also been reported by Nishida et al. (23), who found that LISW significantly increased the expression of VEGF mRNA and its receptor, Flt-1. Their studies on the effects of LISW on a porcine model of chronic myocardial ischemia also showed that VEGF expression was significantly upregulated in the ischemic myocardial cells after treatment inducing neovascularization and improving myocardial perfusion (24).

Furthermore, it has been proved that SW therapy improved symptoms and myocardial perfusion in patients with severe coronary artery disease without any complications or adverse effects (24-26).

Regarding erectile dysfunction, Vardi et al. have been the first ones to believe in the use of

LISW to improve male sexual function (27). In the first randomized, double-blind, sham-controlled study, they demonstrated a positive short-term clinical and physiological effect on the erectile function of men who respond to oral PDE5Is (28). In another trial they reported an improvement in penile hemodynamics and endothelial function, as well as IIEF-EF domain score in severe ED patients who were poor responders to PDE5Is.

In this paper we demonstrated the efficacy of LISW in the medical management of ED. Our data show a statistically significant improvement of IIEF-EF score (5 points) and an increase of SEP and GAQ scores after treatment.

Limitations of this study are the lack of a sham controlled arm and the relatively low number of participants.

CONCLUSIONS

LISW has a well-documented positive clinical and physiological effect on erectile function. The preliminary data at 1 and 3 months follow-up are very encouraging and indicate a therapeutic success of this second generation technology for treating ED with linear low-intensity shockwaves. We also noticed that this treatment is feasible and easy to administer and with no side effects reported. Clearly, we cannot assure the long-term efficacy of LISW, so further studies are needed in order to strengthen these results and to assess whether is possible to repeat cyclically the treatment.

CONFLICT OF INTEREST

None declared.

REFERENCES

- Hatzimouratidis K, Amar E, Eardley I, Giuliano F, Hatzichristou D, et al. Guidelines on male sexual dysfunction: erectile dysfunction and premature ejaculation. *Eur Urol*. 2010;57:804-14.
- Feldman HA, Goldstein I, Hatzichristou DG, Krane RJ, McKinlay JB. Impotence and its medical and psychosocial correlates: results of the Massachusetts Male Aging Study. *J Urol*. 1994;151:54-61.
- de Araujo AC, da Silva FG, Salvi F, Awad MC, da Silva EA, Damião R. The management of erectile dysfunction with placebo only: does it work? *J Sex Med*. 2009;6:3440-8.
- Yetik-Anacak G, Sorrentino R, Linder AE, Murat N. Gas what: NO is not the only answer to sexual function. *Br J Pharmacol*. 2015;172:1434-54.
- Tsertsvadze A, Yazdi F, Fink HA, MacDonald R, Wilt TJ, Bella AJ, et al. Oral sildenafil citrate (viagra) for erectile dysfunction: a systematic review and meta-analysis of harms. *Urology*. 2009;74:831-836.e8.
- Montorsi F, Verheyden B, Meuleman E, Jünemann KP, Moncada I, Valiquette L, et al. Long-term safety and tolerability of tadalafil in the treatment of erectile dysfunction. *Eur Urol*. 2004;45:339-44; discussion 344-5.
- Apfel RE. Acoustic cavitation: a possible consequence of biomedical uses of ultrasound. *Br J Cancer Suppl*. 1982;5:140-6.
- Srisubut A, Potisat S, Lojanapiwat B, Setthawong V, Laopaiboon M. Extracorporeal shock wave lithotripsy (ESWL) versus percutaneous nephrolithotomy (PCNL) or retrograde intrarenal surgery (RIRS) for kidney stones. *Cochrane Database Syst Rev*. 2009;(4):CD007044.
- Hatzichristodoulou G, Meisner C, Gschwend JE, Stenzl A, Lahme S. Extracorporeal shock wave therapy in Peyronie's disease: results of a placebo-controlled, prospective, randomized, single-blind study. *J Sex Med*. 2013;10:2815-21.
- Zimmermann R, Cumpas A, Miclea F, Janetschek G. Extracorporeal shock wave therapy for the treatment of chronic pelvic pain syndrome in males: a randomised, double-blind, placebo-controlled study. *Eur Urol*. 2009;56:418-24.
- Lei H, Liu J, Li H, Wang L, Xu Y, Tian W, et al. Low-intensity shock wave therapy and its application to erectile dysfunction. *World J Mens Health*. 2013;31:208-14.
- Wang CJ, Wang FS, Yang KD, Weng LH, Hsu CC, Huang CS, et al. Shock wave therapy induces neovascularization at the tendon-bone junction. A study in rabbits. *J Orthop Res*. 2003;21:984-9.
- Gruenewald I, Appel B, Kitrey ND, Vardi Y. Shockwave treatment of erectile dysfunction. *Ther Adv Urol*. 2013;5:95-9.
- Rosen RC, Allen KR, Ni X, Araujo AB. Minimal clinically important differences in the erectile function domain of the International Index of Erectile Function scale. *Eur Urol*. 2011;60:1010-6.
- Rosen RC, Cappelleri JC, Gendrano N 3rd. The International Index of Erectile Function (IIEF): a state-of-the-science review. *Int J Impot Res*. 2002;14:226-44.
- Romeo P, Lavanga V, Pagani D, Sansone V. Extracorporeal shock wave therapy in musculoskeletal disorders: a review. *Med Princ Pract*. 2014;23:7-13.

17. Mariotto S, Cavalieri E, Amelio E, Ciampa AR, de Prati AC, Marlinghaus E, et al. Extracorporeal shock waves: from lithotripsy to anti-inflammatory action by NO production. *Nitric Oxide*. 2005;12:89-96.
18. Toda N, Ayajiki K, Okamura T. Nitric oxide and penile erectile function. *Pharmacol Ther*. 2005;106:233-66.
19. Boolell M, Allen MJ, Ballard SA, Gepi-Attee S, Muirhead GJ, Naylor AM, et al. Sildenafil: an orally active type 5 cyclic GMP-specific phosphodiesterase inhibitor for the treatment of penile erectile dysfunction. *Int J Impot Res*. 1996;8:47-52.
20. Burnett AL. The role of nitric oxide in erectile dysfunction: implications for medical therapy. *J Clin Hypertens (Greenwich)*. 2006;8:53-62.
21. Qiu X, Lin G, Xin Z, Ferretti L, Zhang H, Lue TF, et al. Effects of low-energy shockwave therapy on the erectile function and tissue of a diabetic rat model. *J Sex Med*. 2013;10:738-46.
22. Ito K, Fukumoto Y, Shimokawa H. Extracorporeal shock wave therapy as a new and non-invasive angiogenic strategy. *Tohoku J Exp Med*. 2009;219:1-9.
23. Nishida T, Shimokawa H, Oi K, Tatewaki H, Uwatoku T, Abe K, et al. Extracorporeal cardiac shock wave therapy markedly ameliorates ischemia-induced myocardial dysfunction in pigs in vivo. *Circulation*. 2004;110:3055-61.
24. Kikuchi Y, Ito K, Ito Y, Shiroto T, Tsuburaya R, Aizawa K, et al. Double-blind and placebo-controlled study of the effectiveness and safety of extracorporeal cardiac shock wave therapy for severe angina pectoris. *Circ J*. 2010;74:589-91.
25. Vasyuk YA, Hadzegova AB, Shkolnik EL, Kopeleva MV, Krikunova OV, Iouchtchouk EN, et al. Initial clinical experience with extracorporeal shock wave therapy in treatment of ischemic heart failure. *Congest Heart Fail*. 2010;16:226-30.
26. Vardi Y, Appel B, Jacob G, Massarwi O, Gruenwald I. Can low-intensity extracorporeal shockwave therapy improve erectile function? A 6-month follow-up pilot study in patients with organic erectile dysfunction. *Eur Urol*. 2010;58:243-8.
27. Vardi Y, Appel B, Kilchevsky A, Gruenwald I. Does low intensity extracorporeal shock wave therapy have a physiological effect on erectile function? Short-term results of a randomized, double-blind, sham controlled study. *J Urol*. 2012;187:1769-75.
28. Gruenwald I, Appel B, Vardi Y. Low-intensity extracorporeal shock wave therapy-a novel effective treatment for erectile dysfunction in severe ED patients who respond poorly to PDE5 inhibitor therapy. *J Sex Med*. 2012;9:259-64.

Correspondence address:

Antonio Ruffo, MD
 Department of Urology
 University of Naples Federico II, Naples, Italy
 Via S.Pansini 5
 CAP 80100, Naples, Italy
 Telephone: + 39 081 746-2607
 Email: antonio.ruffo7@gmail.com



Actas Urológicas Españolas

www.elsevier.es/actasuro



CASUISTRY

Linear shock wave therapy in the treatment of erectile dysfunction[☆]

M. Pelayo-Nieto^{*}, E. Linden-Castro, A. Alias-Melgar, D. Espinosa-Pérez Grovas, F. Carreño-de la Rosa, F. Bertrand-Noriega, R. Cortez-Betancourt

Departamento de Urología, Centro Médico Nacional 20 de Noviembre, México Distrito Federal, Mexico

KEYWORDS

Erectile dysfunction;
Vasculogenic erectile dysfunction;
Linear shock wave;
Linear shock wave therapy

Abstract

Introduction: Linear shock wave therapy (LSWT) is a new noninvasive therapy that uses low-intensity shock waves to induce local angiogenesis promising modality in the treatment of erectile dysfunction (ED).

Objective: To evaluate the effectiveness of LSWT in men with vasculogenic erectile dysfunction (ED), in a Tertiary Care Center.

Material and methods: Included 15 men aged 45–70 years, sexually active with mild and moderate vascular ED evaluated with the International Index of Erectile Function (IIEF). The study was conducted in three stages: screening, treatment and results. Treatment stage: 4 weekly sessions LSWT (RENOVA[®]) 5000 waves (.09 mJ/mm²). Erectile function was assessed with IIEF-EF, SEP (Sexual Encounter Profile) and GAQ (Global Assessment Questions) at one and six months after treatment.

Results: The rate of success was 80% (12/15). Patients with mild ED (6/15) 40% and moderate ED (9/15) 60%. We found a positive association between IIEF-Basal (average 14.23 pts) and IIEF at one month and six months after therapy (19.69 pts) a difference of 5.46 pts ($p < .013$).

Conclusions: The feasibility and tolerability of this treatment, and rehabilitation potential features, make it this an attractive new treatment option for patients with ED.

© 2014 AEU. Published by Elsevier España, S.L.U. All rights reserved.

PALABRAS CLAVE

Disfunción eréctil;
Disfunción eréctil vasculogénica;
Ondas de Choque Lineal;
Terapia de Ondas de Choque Lineal

Terapia de ondas de choque lineales en el tratamiento de la disfunción eréctil

Resumen

Introducción: La terapia de ondas de choque lineales (LSWT) es una nueva terapia no invasiva que utiliza ondas de choque de baja intensidad para inducir la angiogénesis local controlada y mejorar significativamente la función eréctil.

Objetivo: Evaluar la eficacia de la LSWT en hombres con disfunción eréctil vasculogénica (DE) en un centro de atención de tercer nivel.

[☆] Please cite this article as: Pelayo-Nieto M, Linden-Castro E, Alias-Melgar A, Espinosa-Pérez Grovas D, Carreño-de la Rosa F, Bertrand-Noriega F, et al. Terapia de ondas de choque lineales en el tratamiento de la disfunción eréctil. Actas Urol Esp. 2015. <http://dx.doi.org/10.1016/j.acuro.2014.09.010>

^{*} Corresponding author.

E-mail address: marcelapelayo@hotmail.com (M. Pelayo-Nieto).

Material y métodos: Se incluyeron 15 hombres de edades comprendidas entre 45 y 70 años, sexualmente activos con DE vascular leve y moderada, evaluados con el índice internacional de función eréctil (IIEF). El estudio se realizó en 3 etapas: detección, tratamiento y seguimiento. Recibieron 4 sesiones de LSWT semanales (RENOVA®) 5.000 ondas (0,09 mJ/mm²). La función eréctil se evaluó con IIEF-EF, Perfil del encuentro sexual (SEP) y Cuestionario de evaluación global (GAQ) al mes y a los 6 meses después del tratamiento.

Resultados: La tasa de éxito fue del 80% (12/15). Pacientes con DE leve 40% y DE moderada 60%. Se encontró una asociación positiva entre el IIEF-basal (promedio 14,23 pts) y IIEF un mes y 6 meses después del tratamiento (19,69 pts) una diferencia de 5,46 puntos ($p < 0,013$).

Conclusiones: La factibilidad y tolerabilidad de este tratamiento, y sus características potenciales de rehabilitación, hacen que pueda ser una nueva opción terapéutica atractiva para pacientes con DE.

© 2014 AEU. Publicado por Elsevier España, S.L.U. Todos los derechos reservados.

Introduction and clinical scenario

Erectile dysfunction (ED) is the persistent inability to achieve and maintain the erection sufficient to permit satisfactory sexual intercourse.¹ Vasculogenic ED is due to diseases such as diabetes mellitus, hypertension, hyperlipidemia, smoking, or vascular occlusive disease.^{2,3} Although ED is a benign disorder, it affects physical, mental, and social health and has a significant impact on quality of life of men and their partners.⁴ LSWT stimulates the expression of angiogenesis-related growth factors, such as endothelial nitric oxide synthase, vascular endothelial growth factor, and endothelial cell proliferation factors. Also LSWT induces neovascularization and cell proliferation.⁵ LSWT could improve penile blood flow and endothelial function by stimulating angiogenesis in the penis.⁶ This technology is becoming a new modality in the treatment of patients with ED.

Clinical cases

We evaluated 15 men, with vasculogenic ED, between 45 and 70 years of age sexually active (sexual activity with a partner or manual stimulation) with mild to moderate vasculogenic ED. Patients were assessed with the International Index of Erectile Function (IIEF-EF). The study was conducted in three stages, from June to December 2013. The first stage consisted of screening, including complete medical history and physical examination. The second stage was the treatment, which in turn was carried out in two phases, the first phase is called "physical therapy" in which all patients received 4 sessions with LSWT (RENOVA®) 5000 waves of 0.09 mJ/mm², 300 intensity waves/min (5 Hz), 40 mm deep, in four areas (cavernosum right, left waves on each side 900, and left and right crus waves 1600 on each side); each session lasting 20 min with an interval of one week between each session.

The treatment is performed on an outpatient basis without using any anesthetic. The second phase of treatment consisted of "rehabilitation" at home between sessions (sexual activity with a partner or manual stimulation); and finally, the third stage of the study, evaluating the clinical results using IIEF, EHS (Erection Hardness Score),

SEP (Sexual Encounter Profile), GAQ (Global Assessment Questions) at one month and six months after treatment.

We analyzed quantitative and qualitative variables such as age, body mass index (BMI), smoking history, diabetes mellitus, hypertension, ischemic heart disease, Basal IIEF (Grade ED), EHS, SEP, years with ED. The statistical analysis is done with GraphPad Prism 6.0 and SPSS 19 statistics using the following tests: Student *t* distribution (*t*), Pearson correlation (*r*), (*p*).

Results

Fifteen men with a mean age of 59.6 years (45–70) with mild to moderate ED were enrolled. 40% of patients (6/15) had mild ED, and 60% had moderate ED (9/15). Patients with mild ED had a basal IIEF-EF average of 18 points, and 13 points for patients with moderate ED. Treatment efficacy was evaluated with IIEF-EF, GAQ, and SEP.

Success of treatment was defined as an increase of >2 points and >5 points in groups of mild and moderate, respectively (9). No adverse effects occurred. The rate of success was 80%. We found a positive association between the basal IIEF (average 14.23 pts) and IIEF after one month and six months (19.69 pts) with a difference of 5.46 pts ($p < 0.013$) (Table 1).

Patients with mild ED 83% (5/6) had improvement >2 pts; and patients with moderate ED 78% (7/9) had an increase of >5 pts ($p < 0.56$).

We found no association between minor age (mean 59.6 years) and treatment success, (7/15) 46% of patients were >60 years, all these (7/7) had a positive response to treatment, and (8/15) 54% patients were <60 years in this group, 62% (5/8) were successful with the treatment ($p < 0.01$).

We observed that patients who had 1–5 years with ED 60% (9/15) showed an improvement of 4 points in 67% (6/9) of patients, ($p < 0.20$); and we did not find an association between the IPSS (average 9 points) and the success of treatment ($p = 0.0712$).

We analyzed the influence of the smoking index on the response to the treatment. Patients had a smoking index <20 and >20, and there is a negative association ($p < 0.05$) between these groups, 73% (11/15) of patients had a smoking index (SI) <20, 92% (10/11) of them were successful with

Table 1 Results of sexual function questionnaires before and 1 month after low-intensity extracorporeal shockwave therapy.

Test Score	Baseline Score	Score 1 mo after treatment	p value
IIEF	15 (11–18) pts	20 (11–23) pts	$p < 0.013$
EHS	2 (2–3) pts	4 (2–4) pts	$p < 0.01$
SEP III	7 patients	12 patients	$p = 0.0013$
GAQ	–	12 patients	

IIEF: International Index of Erectile Function 21–25 points = normal, 16–20 = mild erectile dysfunction, 11–15 = moderate erectile dysfunction, 5–10 = severe erectile dysfunction. EHS: 0 = the penis enlarges, 1 = the penis enlarges, but not flabby, 2 = the penis hardens, but not enough for penetration, 3 = the penis is hard enough for penetration but not completely hard, 4 = the penis is completely hard and stiff. SEP: Sexual Encounter Profile; GAQ: Global Assessment Questions.

the treatment, and only 50% (2/4) of patients with a SI >20 showed improvement.

There is no influence between obesity and treatment response in these patients, according to the BMI. Overweight 73% (11/15) and obese 27% (4/15) patients, in the obese patients group had 50% (2/4) success with the treatment, the trend is that there is no association between obesity and no improvement in IIEF ($p = 0.15$).

Diabetic patients were 53% (8/15), of which 62% (5/8) had a favorable response to treatment, and 47% (7/15) of non-diabetic patients were successful with the treatment.

During the study, we compared the strength of erection with baseline and post-treatment level, finding that 53% (8/15) of patients had EHS <2, and of these, 33% (3/8) showed improvement with treatment ($p < 0.01$) (Table 2).

In reviewing the responses on the GAQ, in our study we found that 80% (12/15) of patients responded "yes", therefore we consider it a successful treatment for these patients (Table 1).

Discussion

All treatments available for ED improve sexual function and the quality of erections, but they are not curative. The search for a cure for ED is the next step, and it should be the goal in the coming years. Scientific evidence casts controversial results, so efficiency will be demonstrated in LSWT double-blind controlled studies.

We selected measurement tools validated and accepted as the IIEF and EHS, these questionnaires have a high degree of sensitivity and specificity for detecting changes in the mechanism of erection associated to the treatment.^{7–9}

The results in our study show that EHS was >3 in 80% of patients after LSWT. It is a remarkable improvement in patients, and it is noteworthy that it was achieved without using any medication. Subjective evaluation of erectile function coincides with the fact that LSWT has an effect on the mechanism of erection by improving blood flow to the penis.¹⁰ It is suggested that successful LSWT for mild to moderate ED is defined as an increase >2 and >5 points in the IIEF.¹¹

Table 2 Patient characteristics and the effect of low-intensity extracorporeal shockwave therapy on the International Index of Erectile Function score.

Patient characteristics	No. Patient that improve IIEF	p value
ED grade		
Mild	(5/6)	$p < 0.56$
Moderate	(7/9)	
Age		
<60 years	(5/8)	$p < 0.01$
>60 years	(7/7)	
ED duration		
>3 years	(6/6)	$p < 0.20$
<3 years	(6/9)	
Smoking index		
>20	(2/4)	$p < 0.05$
<20	(10/11)	
Quality of life		
QoL >15	(10/10)	
QoL <15	(2/5)	$p = 0.19$
Body mass index		
>30	(2/4)	$p = 0.009$
<30	(10/11)	
Diabetes mellitus		
Diabetic patients	(5/8)	
Non-diabetic Patients	(7/7)	$p = 0.1$
Trust to achieve and maintain erection		
Q15 >3	(10/10)	
Q15 <3	(2/5)	$p = 0.19$

SEP evaluates sexual encounters with two questions; SEP-2 in the past 4 weeks, were you able to penetrate your partner?, SEP-3 Have you had an erection long enough for you to have successful intercourse? The GAQ questionnaire evaluates treatment; GAQ-1 in the past 4 weeks, Has the treatment you have been following improved erectile function?, GAQ-2 if the response to GAQ-1 is YES, Has the treatment improved its ability to engage in sexual activity during the past 4 weeks? In reviewing the responses to these questionnaires, in our study we found that 80% of patients responded "yes", so it is considered a successful treatment for these patients.

The initial trend indicators help us identify risk factors that contribute to negative results. We consider that monitoring should be extended to obtain long-term results, and so far there are no reports of long-term results.

Conclusions

Our short-term results are encouraging, but they demand a long-term evaluation. Based on our results, LSWT can be effective and safe for the treatment of vasculogenic ED. The feasibility and tolerability of this treatment make it an attractive new treatment option for patients with vasculogenic ED.

Conflict of interest

The authors declare that they have no conflict of interest.

References

1. Persu C, Cauni V, Gutue S, Albu ES, Jinga V, Geavlete P. Diagnosis and treatment of erectile dysfunction. *J Med Life*. 2009;2:394–400.
2. Robert C, Lue TF. Physiology of penile erection and pathophysiology of erectile dysfunction. *Urol Clin North Am*. 2005;32:379–403.
3. Wespes E, Amar E, Eardley I, Giuliano F, Hatzichristou D, Hatzimouratidis K, et al. Guía clínica sobre la disfunción sexual masculina: disfunción eréctil y eyaculación precoz. *Eur Urol*. 2010;5:846–99.
4. Johannes CB, Araujo AB, Feldman HA, Derby CA, Kleinman KP, McKinlay JB. Incidence of erectile dysfunction in men 40 to 69 years old: Longitudinal results from the Massachusetts Male Aging Study. *J Urol*. 2000;163:460–3.
5. Wang CJ, Wang FS, Yang KD, Weng LH, Hsu CC, Huang CS, et al. Shock wave therapy induces neovascularization at the tendon-bone junction: a study in rabbits. *J Orthop Res*. 2003;21:984–9.
6. Lei H, Liu J, Li H, Wang L, Xu Y, Tian W, et al. Low-intensity shock wave therapy and its application to erectile dysfunction. *World J Mens Health*. 2013;31:208–14.
7. Rosen RC, Cappelleri JC, Gendrano N 3rd. The International Index of Erectile function (IIEF): a state-of-the-science review. *Int J Impot Res*. 2002;14:226–30.
8. Rosen RC, Allen KR, Ni X, Araujo AB. Minimal clinically important differences in the erectile function domain of the International index of erectile function scale. *Eur Urol*. 2011;60:1010–6.
9. Vardi Y, Dayan L, Apple B, Gruenwald I, Ofer Y, Jacob G. Penile and systemic endotelial function in men with and without erectile dysfunction. *Eur Urol*. 2009;55:979–85.
10. Vardi Y, Appel B, Jacob G, Massarwi O, Gruenwald I. Can low-intensity extracorporeal shockwave therapy improve erectile function? A 6-month follow-up pilot study in patient with organic erectile dysfunction. *Eur Urol*. 2010;58:243–8.
11. Vardi Y, Appel B, Kilchevsky A, Gruenwald I. Does low intensity extracorporeal shock wave therapy have a physiological effect on erectile function? Short-term results of a randomized, double-blind, sham controlled study. *J Urol*. 2012;187:1769–75.

EFFECTIVENESS OF LOW-INTENSITY EXTRACORPOREAL SHOCK WAVE THERAPY ON PATIENTS WITH ERECTILE DYSFUNCTION (ED) WHO HAVE FAILED TO RESPOND TO PDE5I THERAPY. A PILOT STUDY

Amado Bechara¹, Adolfo Casabé², Walter De Bonis³ and Julián Nazar⁴.

¹Jefe de Unidad de la División Urología del Hospital Durand. Buenos Aires, Argentina. Profesor de Urología de la UBA. Co-Director Médico del Instituto Médico Especializado (IME).

²Encargado del Sector Medicina Sexual de la División Urología del Hospital Durand. Co-Director Médico del IME Buenos Aires, Argentina.

³Urólogo de la División Urología del Hospital Durand y del IME. Buenos Aires, Argentina.

⁴Urólogo de la División Urología del Hospital Durand. Buenos Aires, Argentina.

Summary.- Low-intensity extracorporeal shock wave therapy (LIESWT) of the penis has recently emerged as a promising modality in the treatment of ED.

OBJECTIVES: The objective of this paper is to assess the effectiveness and safety of LIESWT on patients with ED who have failed to respond to PDE5i treatment.

METHODS: Open label, prospective, longitudinal observational study. The study involved an uncontrolled population of 25 patients. The treatment consisted in applying 20,000 shock waves during a period of four weeks. In each session the patient received 5000 shock

waves of 0.09 mJ/mm²: 1800 were applied on the penis (900 on each corpus cavernosum), and 3200 were applied on the perineum (1600 on each crus). During the active treatment and follow-up phases, all patients remained on their regular high on demand or once-a-day dose PDE5i schedules.

Main Outcome Measures: Effectiveness was assessed by IIEF-6, SEP2, SEP3 and GAQ. Patients were considered to be responders whenever they improved on all three erection assessment parameters and respond positively to the GAQ at three months posttreatment. Adverse events were recorded. Statistical variables were applied and findings were considered to be statistically significant whenever the P value was < 0.05.

RESULTS: Eighty percent (median age 63) of the patients (20/25) completed the study. Five patients were lost to follow-up and were excluded from the analysis.

Sixty percent (60%) of the patients responded to the treatment, improved the 3 efficacy evaluating parameters and responded positively to the GAQ. The increase in mean IIEF-6 score was of 9 points after the third post-treatment month. There were no patients reporting treatment-related adverse events.

CONCLUSIONS: LIESWT for men with ED and that are PDE5i non-responders was safe and effective and restoring PDE5i response in more than 50% of patients. A large-scale multicenter study is required to determine the benefits of this treatment for ED.



CORRESPONDENCE

Amado Bechara
Jefe de Unidad de la División Urología
del Hospital Durand.
Buenos Aires, (Argentina).

amadobechara@fibertel.com.ar

Accepted for publication: December 8th, 2014

Keywords: Low Intensity Extracorporeal Shock Wave Therapy. Erectile dysfunction. PDE5i.

Resumen.- Las LISW son una novedosa modalidad de tratamiento en pacientes con disfunción eréctil (DE).

OBJETIVO: Evaluar la efectividad y seguridad de las LISW en varones con DE no respondedores a IPDE5.

MÉTODO: Estudio naturalístico, prospectivo, longitudinal, observacional que incluyó una población de 25 pacientes no respondedores a dosis máxima de IPDE5. El tratamiento consistió en aplicar 20000 LISW durante 4 semanas (4 sesiones). En cada sesión el paciente recibió 5000 ondas de choque de 0,09 mJ/mm². 1800 aplicadas en el pene (900 en cada cuerpo cavernoso) y 3200 en el periné (1600 en la raíz derecha e izquierda cavernosa). Durante el tratamiento y fases de seguimiento se mantuvo igual dosis de IPDE5 como venía siendo tratado. Los cambios sobre la erección fueron evaluados utilizando el Índice Internacional de la Función Eréctil (IIEF-5) y las preguntas 2 y 3 del Perfil de Encuentro Sexual (SEP). Complementariamente se agregó una pregunta sobre eficacia global del tratamiento (GAQ). Consideramos respondedor al paciente que mejoraba significativamente los 3 parámetros de rigidez y que respondiera afirmativamente a la GAQ, 3 meses post-tratamiento. Fueron aplicadas variables de cálculo para considerar una significancia estadística con una $p < 0,05$.

RESULTADOS: El 80% de los pacientes (20/25) completaron el estudio. La mediana de la edad fue de 63 años. Cinco fueron excluidos del análisis por pérdida de seguimiento. Del grupo evaluado, 12 (60%) mejoraron los 3 parámetros de erección y respondieron afirmativamente a la GAQ. El incremento promedio del IIEF-5 fue de 9 puntos. Ningún evento adverso fue reportado.

CONCLUSIONES: LISW en varones con DE no respondedores a IPDE5 fue eficiente y seguro, restaurando la respuesta a los IPDE5 en más de la mitad de los pacientes. Estudios multicéntricos, controlados y con mayor número de pacientes confirmaran el beneficio de esta nueva línea de tratamiento.

Palabras clave: Terapia de ondas de choque de baja intensidad. Disfunción eréctil. IPDE5.

INTRODUCTION

The treatment of erectile dysfunction (ED) has evolved considerably over the last decade, following the introduction of type 5 phosphodiesterase inhibitors (PDE5i), which have become the first line of treatment for this complaint.

Despite the effectiveness of these drugs, a number of patients ranging from 40% to 50% (depending on the etiology of their disease) do not respond to drug therapy even after optimization approaches such as treatment combinations have been implemented (1-5).

The second and third lines of treatment are the self-injection of vasoactive drugs and penile prosthetic implants, which many patients are reluctant to accept.

Recently, two observational and one controlled trial have been published reported efficacy and safety of low-intensity extracorporeal shock wave therapy (LI-ESWT), particularly for patients with ED of vascular origin who are PDE5i non-responders (6-8).

Young and Dyson discovered that therapeutic ultrasound encourages angiogenesis by enhancing the expression of vascular endothelial growth factor. (9). Nurzynska et al. demonstrated that shock waves have positive influence on both the proliferation and the differentiation of cardiomyocytes, smooth muscle and endothelial cells precursors, with a more obvious effect being evident in the cells from normal heart than in those taken from pathologic hearts (10).

From these initial reports, LI-ESWT was implemented in the past decade in the treatment of chronic myocardial ischemia, diabetic foot ulcers, among other applications (11-15).

LI-ESWT involves a very small amount of energy (0.09 mJ/mm²), equivalent to 10% of the energy used by conventional lithotripters for the treatment of urinary tract stones.

Initially, LI-ESWT systems essentially involved orthopedic extracorporeal shock wave therapy devices delivering targeted energy (7).

The mechanism of action is still not completely elucidated. However, it has been shown that low-intensity energy induces the production of a physiologically significant amount of non-enzymatic nitric oxide and activates the intracellular cascade pathways that trigger the release of angiogenic factors (16).

Based on the above assumptions, the aim of this study has been to evaluate the effectiveness and safety of low-intensity extracorporeal shock wave therapy on patients with ED that are PDE5i non-responders.

AIM

To assess the effectiveness and safety of low-intensity extracorporeal shock wave therapy on patients with Erectile Dysfunction (ED) who have failed to respond to PDE5i treatment

METHODS

This was a prospective, longitudinal, observational and independent study, designed to evaluate the safety and efficacy of LI-ESWT in a population uncontrolled sexually active men with erectile dysfunction and associated vascular risk factors (VRFs) are PDE5i non responders.

The inclusion criteria involved sexually active ED male patients who were non-responders to oral PDE5i therapy and exhibited vascular risk factors (VRFs) (e.g., diabetes, hypertension, dyslipidemia and coronary artery disease). Patients with untreated hypogonadism or a history of pelvic surgery, as well

as patients with ED of neurological origin (resulting from prostatectomy, pelvic surgery or spinal cord injury) were excluded.

They were considered non-responders to PDE5 inhibitors those patients who after completing all optimization measures commonly suggested manifested not achieve and / or maintain erections sufficient for penetration and had an International Index of Erectile Function 6 questions (IIEF-6) under action of these drugs <26 points (17,18).

The study involved a total population of 25 patients. During the active treatment and follow-up phases, all the patients remained on their regular high on demand or once-a-day dose PDE5i schedules (Table I).

The following evaluation criteria were used: the International Index of Erectile Function Questionnaire (IIEF-6) to assess ED severity (19); questions 2 and 3 from the Sexual Encounter Profile (SEP2 and SEP3) to assess penetration and erection sustainability; and a Global Assessment Question (GAQ): Does the treatment has improved the quality of your erections?.

The severity of ED was classified into five categories according to the IIEF-6 score: no ED -score 26 to 30-, mild -score 22 to 25-, mild to moderate

Table I. Study design and procedures.

	VISIT 1 Screening (Baseline)	VISIT 2 1 st week of treatment	VISIT 3 2 nd week of treatment	VISIT 4 3 rd week of treatment	VISIT 5 4 th week of treatment	VISIT 6 1 st month evaluation	VISIT 7 3 rd month evaluation
PDE5i	X	X	X	X	X	X	X
Medical history	X						
Physical Examination	X	X	X	X	X	X	X
LSWT		X	X	X	X		
IIEF-EF, SEP 2-3	X					X	X
GAQ						X	X
Treatment		X	X	X	X		
Adverse Effects		X	X	X	X	X	X

-score 17 to 21-, moderate -score 11 to 16-, and severe -score 6 to 10- (17).

The evaluation criteria were assessed before treatment as well as one month and three months after treatment completion. Patients were always evaluated while on PDE5i therapy.

After the treatment the patients were considered to be responders whenever they improved on all three assessment erection parameters and to respond positively to the GAQ at three months post-treatment.

This trial was performed using RENOVA NR, a LI-ESWT device manufactured by Direx Group. The treatment consisted in applying 20,000 shock waves during a period of four weeks (four sessions). In each session, the patient received 5000 shock waves of 0.09 mJ/mm²: 1800 were applied on the penis (900 on each corpus cavernosum), and 3200 were applied on the perineum (1600 on each crus). The treatment areas were the same in all four sessions. All sessions were performed without anesthesia and in an outpatient setting, and each lasted 20 minutes.

The study was conducted according to Good Clinical Practices and the Helsinki Declaration, it was approved by the local Research Ethics Committee, and all the patients signed an informed consent form.

Considering the number of patients included and the rate of loss to follow for the calculation of the variables of demographic characteristics of responders and non-responders and the efficacy variables, medians were compared using nonparametric tests as Mann-Whitney test and the Wilcoxon test Match respectively. A $p < 0.05$ was considered statistical significance

RESULTS

Eighty percent (80%) of the patients (20/25) completed the study. Five patients were lost to follow-up and were excluded from the analysis.

The median age and the duration of ED were 63 years and 42 months respectively (Table II). Additional demographic details are shown in Table II.

Erectile dysfunction as per the IIEF-6 score was severe in 20% of the patients, moderate in 40%, mild to moderate in 35%, and mild in 5%. The mean age of the patients was 54.3, 62.3, 63.4 and 58, respectively, for severe, moderate, mild to moderate and mild ED. ED duration as related to ED severity was 28.5, 66, 60 and 36 months for severe, moderate, mild to moderate and mild patients, respectively.

Table II. Baseline data of the patients.

n	20
Median Age	63
Age range (years)	46-78
Median ED duration (months)	42
Range (months)	12-132
Cardiovascular risk factors	n (%)
Hypertension	11 (55 %)
Diabetes Mellitus	11 (55 %)
Dyslipidemia	5 (12,5 %)
Coronary artery disease	5 (12,5 %)

Sixty percent (60%) of the patients (12/20) responded to the treatment, improved the 3 parameters for evaluating efficacy and responded positively to the GAQ. The baseline characteristics of the patients that responded and failed to respond to the therapy are shown in Table III.

The increase in the IIEF-6 score in responders patients was statistically significant as from the first-month evaluation, and attained a mean of 9 points after the third month post-treatment (Figure 1).

Improvements on the IIEF score were more dramatic whenever ED was more severe, with changes of 14, 10.8 and 5.8 points for patients with severe, moderate and mild-to-moderate ED respectively. Four patients reached a score equal to or higher than 26 points in the IIEF, and the degree of severity dropped in the remaining patients (Table IV).

Towards the end of the study, significant changes were encountered in the responder group with regard to questions 2 and 3 of the Sexual

Encounter Profile. In the non-responder group of patients, the changes in these two questions were not statistically significant (Figure 2).

15 of 20 patients (75 %) stated that the therapy had improved their erectile response.

There were no patients reporting treatment-related adverse events.

DISCUSSION

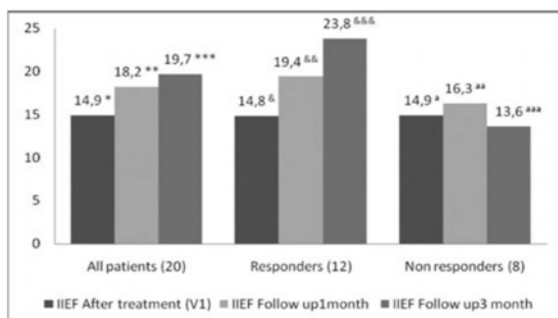
Erectile dysfunction, a highly prevalent complaint in men over 50, can almost always be traced back to a history of vascular risk factors (19).

Many studies have emphasized the status of ED as a potential indicator of cardiovascular disease later in life, while other clinical trials have found a high rate of ED in men with vascular factors such as metabolic syndrome, diabetes and hypertension (20, 21).

Table III. Demographic characteristics of patients (both responders and non-responders).

Patients	Responders	Non-responders
n	12	8
Median Age (years)	56.5*	60**
Age range (years)	46-78	62-65
Median ED durations (months)	36&	30 &&
Range (months)	12-132	6-120
Cardiovascular risk factors	n (%)	n (%)
Hypertension	6 (50 %)	5 (62.5 %)
Diabetes Mellitus	7 (58 %)	4 (50 %)
Dyslipidemia	2 (42 %)	3 (37.5)
Coronary artery disease	4 (33.3 %)	1 (12.5)
ED Severity according to the IIEF	n (%)	n (%)
Severe	1 (8.3 %)	3 (37.5 %)
Moderate	6 (50 %)	2 (25 %)
Mild to Moderate	5 (41.7 %)	2 (25 %)
Mild	0 (0 %)	1 (12.5 %)

Mann Whitney test: * vs ** $P > 0.05$; & vs && $P > 0.05$
ED::Erectile dysfunction



* vs ** P < 0.05	& vs && P < 0.05	a vs aa P < 0.05
* vs *** P < 0.05	& vs &&& P < 0.05	a vs aaa P > 0.05
** vs *** P > 0.05	&& vs &&& P < 0.05	aa vs aaa P > 0.05

Figure 1. Evolution of changes in IIEF-6 score after the first and third month of treatment.

Introduced in 1998, PDE5i have changed the treatment paradigm for patients with ED as a result of this therapy, approximately 60 % of patients can recover their erectile function and lead a satisfactory sex life as a result (22).

The choice of PDE5i and their dose regimen are specific to each patient. However, some patients are all too hastily considered to be non-responders because of prescription dosage errors. With the right dose optimization, an increase in sexual stimuli, a correction of testosterone levels and proper patient dietary training whenever short-acting PDE5i are used, around one-third of non-responders succeed in recovering their erectile function (18).

However, despite these measures, about 40 % of men fail to achieve an adequate response to PDE5i, and must resort to second or third-line options; others abandon all treatment possibilities altogether when they realize that they are not responding to oral therapy.

For some years now, low-intensity extracorporeal shock wave therapy has been implemented to optimize the response of PDE5i.

Qiu X et al have demonstrated that shock wave therapy significantly restored erectile function in rats with streptozotocin-induced diabetes mellitus, to levels similar to those exhibited by healthy controls, thus validating the animal model as comparable to prior clinical trials performed on humans. According to trial results, improvements in erectile function might be attributable to the positive effects afforded by the shock waves on endothelial and smooth muscle regeneration in the penis. These effects appear to be mediated by the recruitment of endogenous smooth muscle cells (23).

Vardi et al presented the first randomized, double-blind, sham-controlled study that demonstrated that low-intensity extracorporeal shock wave therapy has a positive clinical and physiological short-term effect on erectile function for patients that are PDE5i responders (8).

These experts used a compact electrohydraulic system fitted with a targeted shock wave source (Omnispec ED1000, Medispec Ltd, Germantown, MD, USA). Unlike the system we used on our patients, they had to stretch the penis and manually apply the transducer to it proximally, medially and distally, and then apply it to the perineum. With this operator-

Table IV. Changes in ED severity following shock wave treatment concurrently with PDE5I therapy (responders patients).

	Before treatment	After treatment
	n (%)	n (%)
Severe Erectile dysfunction (ED)	1 (8.3)	0 (0)
Moderate ED	6 (50)	0 (0)
Mild to Moderate ED	5 (41.7)	4 (33.3)
Mild ED	0 (0)	4 (33.3)
No ED	0 (0)	4 (33.3)

LSWT – CLINICAL DATA AND REPORTS

EFFECTIVENESS OF LOW-INTENSITY EXTRACORPOREAL SHOCK WAVE THERAPY ON PATIENTS WITH ERECTILE DYSFUNCTION (ED)...

158

dependent method, the selected treatment protocol consisted of two sessions per week over a period of three weeks, and was repeated after a treatment-free interval of three weeks.

It is worth pointing out that, unlike the group of patients presented by Vardi et al (6), those patients included in this presentation were only non-responder patients to oral therapy at the maximum dose, and only after having indicated and verified that all optimization indications had been fulfilled. PDE5i were never suspended, and they continued with their regular scheme throughout the four-week treatment with LISWT, as well as during the follow up period of 1 to 3 months.

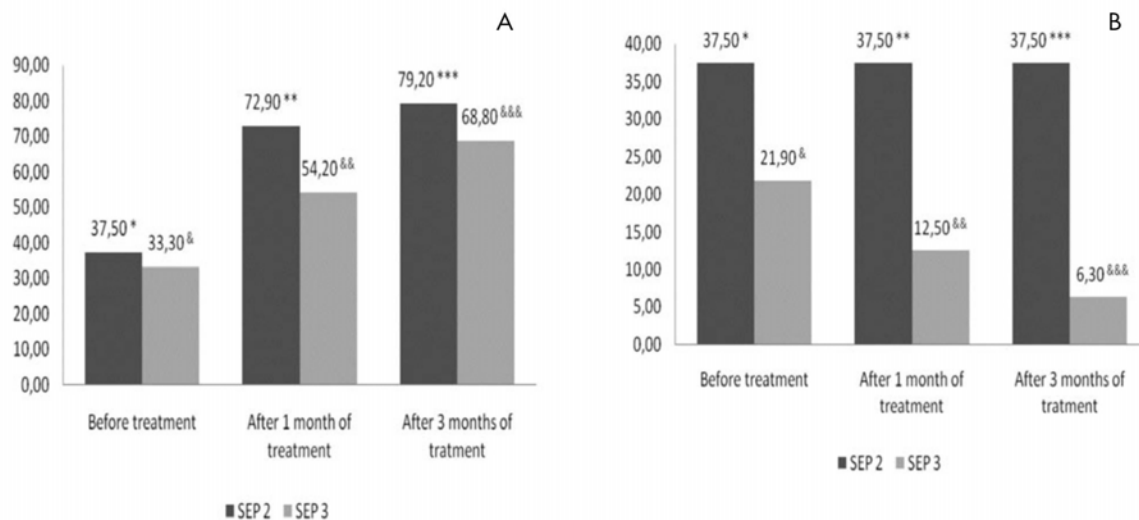
As mentioned before, the device selected for our trial (Renova NR), is manufactured by Direx Group, and involves a special LI-ESWT technology. This operator-independent system is fitted with a transducer that is capable of delivering shock waves

all along the penis, spanning an area of 70mm and thus eliminating the need for penis manipulation. Furthermore, the transducer does not even need to be held by the operator, as it can be secured to the perineum.

Study design was as suggested by the manufacturer, i.e. four weekly sessions, each lasting 20 minutes.

In our trial, improvements in the IIEF-6 score were evident as early as the first month after treatment completion, but the four efficacy parameters became clearly apparent as of the third month after treatment completion, with an average improvement of 9 points in the IIEF.

In a recent report featured at the Congress of the Latin American Society for Sexual Medicine, Reisman et al presented a prospective, multicentric, open-label pilot study which was conducted at four



A. Wilcoxon matched pairs test

* vs **	p<0.05
* vs ***	p<0.01
** vs ***	p>0.05
& vs &&	p>0.05
& vs &&&	p<0.05
&& vs &&&	p>0.05

B. Wilcoxon matched pairs test

* vs **	p>0.05
* vs ***	p>0.05
** vs ***	p>0.05
& vs &&	p>0.05
& vs &&&	p>0.05
&& vs &&&	p>0.05

Figure 2. Evolution of changes in SEP 2 and SEP 3 after treatment in responders (A) and nonresponders (B).

sites and involved 52 patients with mild to severe ED. The patients were treated with the same device as the one used in this trial, with results assessed using IIEF-EF, SEP 2-3 and GAQ at one and three months post-treatment. Success was defined as an increase in the IIEF-EF score between baseline and the second follow-up. Significant changes were reported for 78.8% of the patients in the IIEF score, which exhibited a 6.8 increase (24).

It should be noted that in contrast with Reisman's report, in our trial patients had to exhibit changes across all four PDE5i response enhancement variables (IIEF6, SEP2, 3 and GAQ) –i.e., not just the IIEF score– in order for them to be considered treatment responders. This adds robustness to our results, as numeric changes in the IIEF score alone do imply improvement, but do not necessarily guarantee complete or successful intercourse. In our results, not all patients improved their IIEF6, had better SEP 2 and SEP 3 and many of those who claimed that the treatment had improved (GAQ), not reflected in the IIEF or SEP 2 or SEP3.

In addition, four out of twelve responders in our trial (33 %) attained normal IIEF values, and the rest experienced a decrease in symptom severity (Table V).

Finally, once shock wave therapy was completed and while still on PDE5i treatment, patients in the responder population successfully completed intercourse in 70% of their sexual encounters as shown in figure 2 (SEP 2, 3). This figure is similar to the one exhibited by different PDE5i efficacy reports (25-27).

Our study has several limitations. First, its lack of a placebo group prevents a proper comparison of the effects of shock wave therapy.

Another limitation of this study is the short follow-up phase (three months after treatment), which added to the lack of a placebo group, prevents us from knowing whether the changes are temporary or permanent, or derived from a placebo effect.

Importantly, each patient was compared with himself before and after shock wave therapy concurrently with PDE5 inhibitors. These were patients that had remained unresponsive to oral therapy even after the introduction of optimization measures.

Whenever independent pilot studies are conducted, the number of patients included tends to be small, and the results cannot be generalized. Nevertheless, we believe that, however limited the

experiences reported in the literature so far allow us to take these preliminary data into consideration, while being cautious about its interpretation. We hope that these data will be to be confirmed by multicenter sham control studies on a larger group of patients and involving a longer follow-up phase.

In our group of patients, neither age nor ED duration had an influence on the results (Table II). However, and although changes in the IIEF were directly proportional to ED severity, the group of VRFs and severe ED patients responded less in percentage terms (25%) (Table III). This observation is consistent with the importance of defining whether the number of sessions or shock waves should be increased or repeated over time depending on ED severity. Gruenwald et al report that a second round of L-ESWT was beneficial in 25 patients with partial or unsatisfactory results after the first session (28).

CONCLUSIONS

According to our results, low-intensity extracorporeal shock wave therapy for patients with ED and vascular risk associated who are poor PDE5i responders, was safe and effective. This approach will thus enable the optimization and restoration of PDE5i response in more than 50% of patients. A large-scale multicentric study is required to determine the benefits of this new line of treatment for ED.

REFERENCES AND RECOMMENDED READINGS (*of special interest, **of outstanding interest)

1. Gruenwald I, Shenfeld O, Chen J, Raviv G, Richter S, Cohen A, Vardi Y. Positive effect of counseling and dose adjustment in patients with erectile dysfunction who failed treatment with sildenafil. *Eur Urol* 2006; 50:134-140
2. Hatzimouratidis K, Moysidis K, Bekos A, Tsimsiou Z, Ioannidis E, Hatzichristou D. Treatment strategy for "nonresponders" to tadalafil and vardenafil: A real-life study. *Eur Urol* 2006; 50:126–32.
3. Eardley I, Donatucci C, Corbin J, El-Meliegy A, Hatzimouratidis K, McVary K, Munarriz R, Lee SW. Pharmacotherapy for erectile dysfunction. *J Sex Med* 2010;7:524-40
4. Sommer F, Engelmann U. Future options for combination therapy in the management of erectile dysfunction in older men. *Drugs Aging* 2004; 21: 555–64
5. Dhir R, Lin HCh, Canfield SE, Wang R. Combination therapy for erectile dysfunction: an update review *Asian J Androl* 2011; 13: 382–390

6. Vardi Y, Appel B, Jacob G, Massarwi O, Gruenwald I. Can low-intensity extracorporeal shockwave therapy improve erectile function? A 6-month follow-up pilot study in patients with organic erectile dysfunction. *Eur Urol* 2010; 58:243–8.
7. Gruenwald I, Appel B, and Vardi Y. Low-intensity extracorporeal shock wave therapy—A novel effective treatment for erectile dysfunction in severe ED patients who respond poorly to PDE5 inhibitor therapy. *J Sex Med* 2012; 9:259–264
- **8. Vardi Y, Appel B, Kilchevsky A, Gruenwald I. Does Low Intensity Extracorporeal Shock Wave Therapy Have a Physiological Effect on Erectile Function? Short-Term Results of a Randomized, Double-Blind, Sham Controlled Study. *J Urol* 2012; 187, 1769:1775.
- **9. Young SR and Dyson M: The effect of therapeutic ultrasound on angiogenesis. *Ultrasound Med Biol* 1990; 16: 261–269.
- *10. Nurzynska D, Di Meglio F, Castaldo C, Arcucci A, Marlinghaus E, Russo S, Corrado B, de Santo L, Baldascino F, Cotrufo M, Montagnani S. Shock waves activate in vitro cultured progenitors and precursors of cardiac cell lineages from the human heart. *Ultrasound Med Biol* 2008; 34:334–342.
11. Nishida T, Shimokawa H, Oi K, Tatewaki H, Uwatoku T, Abe K, Matsumoto Y, Kajihara N, Eto M, Matsuda T, Yasui H, Takeshita A, Sunagawa K. Extracorporeal cardiac shock wave therapy markedly ameliorates ischemia-induced myocardial dysfunction in pigs in vivo. *Circulation* 2004; 110:3055–3061.
12. Aicher A, Heeschen C, Sasaki K, Urbich C, Zeiher A, Dimmeler S. Lowenergy shock wave for enhancing recruitment of endothelial progenitor cells: a new modality to increase efficacy of cell therapy in chronic hind limb ischemia. *Circulation* 2006;114: 2823–30.
13. Kikuchi Y, Ito K, Ito Y, Shioto T, Tsuburaya R, Aizawa K, Hao K, Fukumoto Y, Takahashi J, Takeda M, Nakayama M, Yasuda S, Kuriyama S, Tsuji I, Shimokawa H.. Double-blind and placebo-controlled study of the effectiveness and safety of extracorporeal cardiac shock wave therapy for severe angina pectoris. *Circ J* 2010; 74: 589–91.
14. Wang CJ, Kuo YR, Wu RW, Liu RT, Hsu CS, Wang FS, Yang KD. Extracorporeal shockwave treatment for chronic diabetic foot ulcers. *J Surg Res* 2009; 152:96–103.
15. Dumfarth J, Zimpfer D, Vögele-Kadletz M, Holfeld J, Sihorsch F, Schaden W, Czerny M, Aharijad S, Wolner E, Grimm M.. Prophylactic low energy shock wave therapy improves wound healing after vein harvesting for coronary artery bypass graft surgery: a prospective, randomized trial. *Ann Thorac Surg* 2008;86:1909–13
- **16. Gotte G, Amelio E, Russo S, Marlinghaus E, Musci G, Suzuki H. Short time non-enzymatic nitric oxide synthesis from L-arginine and hydrogen peroxide induced by shock waves treatment. *FEBS Lett* 2002; 520:153–5.
17. Cappelleri J., Rosen R, Smith M, Mishra A, Osterloh I. Diagnostic evaluation of the erectile function domain of the International Index of Erectile Function. *Urology* 1999; 54:346–51.
18. McMahon, C; Smith, C, Shabsigh, R. Treating erectile dysfunction when PDE5 inhibitors fail. *BMJ* 2006 ; 11; 332 (7541): 589:592
19. Kloner R. Erectile dysfunction and cardiovascular risk factors. *Urol Clin N Am.* 2005; 32:397–402.
20. Gandaglia G, Briganti A, Jackson G, Kloner RA, Montorsi F, Montorsi , Vlachopoulos C. A Systematic Review of the Association Between Erectile Dysfunction and Cardiovascular Disease. *Eur Urol.* 2014; 65:968–978
21. Seftel AD, Sun P, Swindle R. The prevalence of hypertension, hyperlipidemia, diabetes mellitus and depression in men with erectile dysfunction *J Urol.* 2004; 171 (6 Pt 1):2341–5.
22. Eardley I, Donatucci C, Corbin J, El-Meliegy A, Hatzimouratidis K, McVary K, Munarriz R, Lee SW. Pharmacotherapy for erectile dysfunction *J Sex Med.* 2010 7(1 Pt 2):524–40.
- *23. Qiu X, Lin G, Xin Z, Ferretti L, Zhang H, Lue TF, Lin CS. Effects of low-energy shockwave therapy on the erectile function and tissue of a diabetic rat model. *J Sex Med.* 2013; 10:738–46.
24. Reisman, Y; Hind, A; Varanekas, A; Motil, I. Efficacy and safety of linear focused shockwaves for erectile dysfunction (Renova) – a second generation technology XII Congress of The Latin American Society for Sexual Medicine <http://www.slams2013.org/slams2013-programa-final.pdf> O-15
25. Brock G, Mc Mahon C, Chen K, Costigan T, Shen W, Watkins V, Anglin G, Whitaker S. Efficacy and safety of tadalafil for the treatment of Erectile dysfunction: results of integrated analyses. *J Urol* 2002, 168, 1332–1336.
26. Goldstein I, Lue TF, Padma-Nathan H, Rosen RC, Steers WD, Wicker PA. Oral sildenafil in the treatment of erectile dysfunction. *N Engl J Med* 1998; 338: 1397–1404.
27. Donatucci C, Eardley I, Buvat J, Gittelman M, Kell P, Segerson T, Homering M, Montorsi F; Vardenafil Study Group. Vardenafil improves erectile function in men with erectile dysfunction irrespective of disease severity and disease classification. *J Sex Med.* 2004, 1:301–9.
28. Gruenwald, I. E.; Appel, B2; Vardi, Y The effect of a second course of low intensity shock waves for ED in partial or non-responders to one treatment course *J Sex Med* 2012;9 (suppl 5):303–335 (Abs PS-05-005)



ORIGINAL ARTICLE

Initial experience with linear focused shockwave treatment for erectile dysfunction: a 6-month follow-up pilot study

Y Reisman¹, A Hind², A Varaneckas³ and I Motil⁴

Low-intensity shockwaves (LISW) are known to produce revascularization and have been in evaluation and in use to treat erectile dysfunction (ED). The present single-arm pilot study is aimed to assess the safety and efficacy of a dedicated shockwave device (Renova) on vasculogenic ED patients. Fifty-eight patients with mild to severe ED were treated by LISW and their erectile function was evaluated by the International Index of Erectile Function–Erectile Function Domain (IIEF–EF), Sexual Encounter Profile and Global Assessment Questions questionnaires, at baseline and at 1, 3 and 6 months post treatment. The average IIEF–EF increased significantly from 14.78 at baseline to 21.93 at 3 months post treatment and stabilized at 22.26 at 6 months post treatment. Out of 58 patients, 47 (81%) had a successful treatment. No adverse events were reported during the treatment and the follow-up duration. In conclusion, it suggests that the performance of LISW could add a new advanced treatment for ED.

International Journal of Impotence Research advance online publication, 4 December 2014; doi:10.1038/ijir.2014.41

INTRODUCTION

Vasculogenic erectile dysfunction (ED) is defined as inability to get or keep an erection firm enough for satisfying sexual intercourse and is maybe originated by diseases, such as diabetes mellitus (DM) and atherosclerotic vascular occlusive disease. Current methods for treating vasculogenic ED aim at reducing symptoms instead of reversing the source of the dysfunction, which in the majority of the patients is due to arterial or inflow disorders.¹ It has been demonstrated that shockwaves can enhance intrinsic angiogenesis and are used to treat ischemic heart disease.² Low-intensity shockwaves (LISW) have been evaluated for treating ED in both pilot and randomized sham-controlled studies. The encouraging results that were seen in these studies were the first to show the effect of LISW on ED symptoms,^{3–4} but have never been evaluated elsewhere. Recently published study conducted on rats with DM-associated ED showed that low-energy shock-wave therapy (LESWT) significantly restored erectile function to levels almost similar to normal levels of controls. The therapeutic efficacy of LESWT is possibly mediated by increased recruitment of mesenchymal stem cells (MSCs) that promote the regeneration of DM-damaged erectile tissues.⁵

The present study was aimed to assess the safety and efficacy of a new dedicated shockwave device, 'Renova', which was designed to achieve substantially superior organ coverage, compared with the existing devices and hence produces positive results with a shorter protocol in a multicenter study.

SUBJECTS AND METHODS

Study protocol

This study was a multicenter open-label prospective pilot study, conducted at four sites. It was conducted in accordance with the principles of the Declaration of Helsinki of World Medical Association. Patients gave their written informed consent before participation in the study. This study consisted of a screening phase, treatment phase and a 6-month follow-up

phase. At screening phase, patients had an extensive medical and sexological history evaluation, as well as a physical examination. Inclusion criteria were heterosexual men in stable heterosexual relationship for at least 3 months, aged 20–80 years, with vascular ED (according to physician judgment) for at least 6 months, International Index of Erectile Function–Erectile Function Domain (IIEF–EF)⁶ score of 6–25 points. Recruited patients were both responders and nonresponders to phosphodiesterase type 5 inhibitors (PDE5-i). The exclusion criteria were hormonal, neurological or psychological pathology, past radical prostatectomy, any unstable medical or psychiatric condition, spinal cord injury, penile anatomical abnormalities, clinically significant chronic hematological disease, usage of antiandrogens, recovering from cancer in the past 5 years or radiotherapy in pelvic region.

At baseline and follow-up visits IIEF–EF and Sexual Encounter Profile (SEP)—questions 2 and 3 questionnaires were used.^{7–8} Global Assessment Questions⁹ (GAQ) were used at follow-ups as well. The IIEF–EF questionnaire is widely accepted as the best method to verify ED progress. It includes six questions regarding erectile function and its score range is 1–30 points. Safety was assessed at each treatment and follow-up visits, by answering questions regarding side effects and pain as part of the case report form (CRF). Patients were instructed to inform the investigators if any side effects occur.

Almost all of the patients were using PDE5-i during baseline evaluation. No PDE5-i were used 3 weeks prior to treatment, during shockwave treatment, and until the first follow-up, 1 month post treatments. Answering the questionnaires at the 3 and 6 months post-treatment follow-ups was made, whereas the patients were using PDE5-i, as was done in previously done studies.³ At all follow-up sessions, patients were instructed to return to the exact PDE5-i consumption as at baseline, as shown in Figure 1. Patients committed to avoid using any ED treatment other than PDE5-i oral medication throughout the study duration.

The treatment consisted of 4 weekly treatment sessions. During each session 3600 shocks of 0.09 mJ mm² were applied. Shocks were applied at the penis shaft at right corpus cavernosum and left corpus cavernosum, and at the crura at right crus and left crus, 900 shocks at each area. The treatment areas were the same for each session, so that at the end of the full treatment (four sessions) each area has received 3600 shocks of 0.09 mJ mm².

¹Men's Health Clinic, Amstelland Hospital, Amsterdam, The Netherlands; ²Urology and Andrology Center, Red Crescent Hospital (RCH), Ramallah, Palestine; ³Amber Clinic, Klaipėda, Lithuania and ⁴Urologicka ambulance.cz, Brno, Czech Republic. Correspondence: Dr Y Reisman, Urology, Amstelland Hospital, Laan van de Helende Meesters 8, 1187NR Amsterdam, The Netherlands.
 E-mail: creisman@planet.nl

Received 28 December 2013; revised 10 July 2014; accepted 18 October 2014

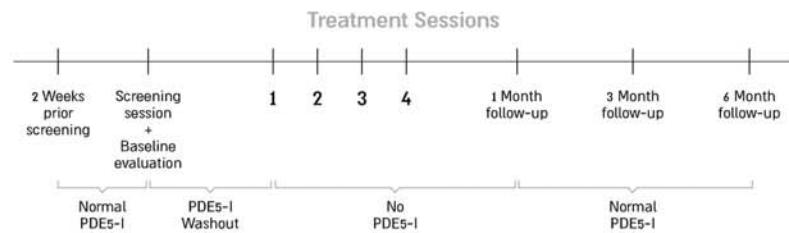


Figure 1. The use of PDE5-I throughout the study.

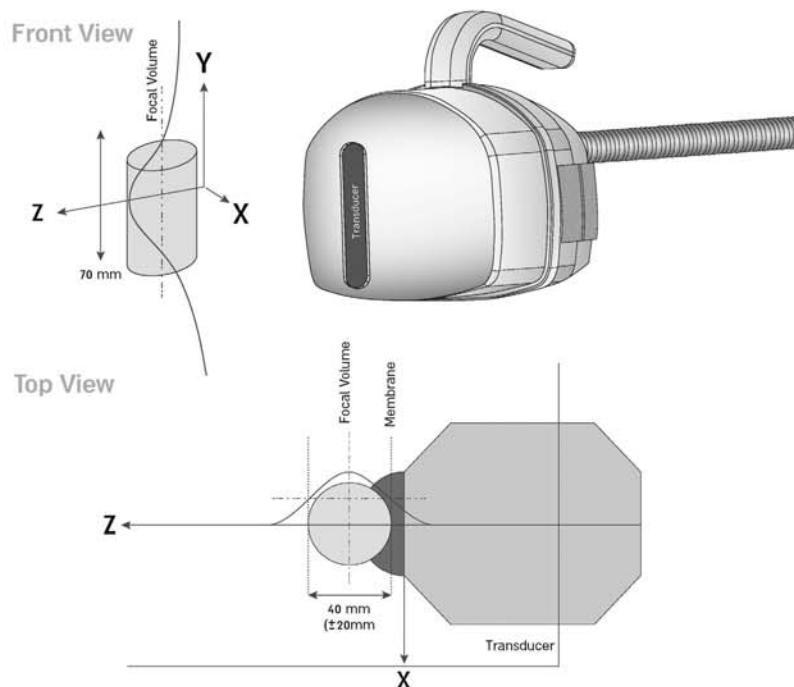


Figure 2. Qualitative view of the shockwave intensity changes.

Follow-ups were conducted at 1, 3 and 6 months post treatment and were consisted of adverse events report, IIEF-EF, SEP and GAQ questionnaires. The primary success criterion, regarding to efficacy, was defined as an increase of IIEF-EF score from baseline to the third follow-up (6 months post treatment) according to the initial ED severity: >2-point increase for mild symptoms; >5 points for moderate symptoms; and >7 points for severe symptoms.⁶

Treatment device

Renova (Direx Group) is the first dedicated shockwave system for ED. Instead of generating shockwaves that converge on a single focal point and require moving the shockwave source to multiple positions along the penis, Renova is based on linear shockwave therapy (LSWT) that enables focusing shockwaves on a 70 mm long and 10 mm width treatment area along the target organ. The shockwaves penetrate into the treated organ to a 40 mm depth and therefore their focal volume is 9.4 cm³. Figure 2 described qualitatively how shockwaves intensity changes in z axis. The prolonged shape of the transducer (Figure 3) enables effective positioning when applying to the crura by its direct contact to the groin. Renova's electromagnetic generator delivers shockwaves with a maximum energy density of 0.09 mJ mm², meaning, they deliver 10% of the pressure used for disintegrating kidney stones. Shocks are delivered at a maximum rate of 300 pulses min⁻¹ (PPM; 5 Hz), therefore, the net treatment time of a session of 3600 shocks lasts ~15 min.



Figure 3. Renova's transducer: its prolonged shape enables effective positioning when applied to the crura.

Statistical analysis

Patients' demographic variables were summarized by descriptive statistics. The average score of each questionnaire and its s.d. was calculated at baseline and at 1-, 3- and 6-month follow-up. Student's *t*-test were used at significance level of < 0.05 .

RESULTS

Fifty-eight middle-aged men (mean: 56.75 ± 9.91 years, range: 33–84 years) with vasculogenic ED were recruited for this study: 20 patients were treated at Men's Health Clinic, Amstelland Hospital, Amsterdam; 17 were treated at the Urology and Andrology Center,

Red Crescent Hospital, Ramallah; 11 were treated at Amber Clinic, Klaipėda; and 10 were treated in Urologickaambulance.cz, Brno. Patients' characteristics were similar in all sites, excluding the patients in Brno, who had a longer duration of ED and a lower success rate than the rest of the sites. The selection of patients in the Lithuanian site was made with patients who had a milder average of clinical signs.

Twenty-five patients (43.1%) suffered from cardiovascular disease, 41.4% (24 patients) had diabetes, 39.7% (23 patients) suffered from hypertension and 46.6% (27) had high cholesterol level. Fifty patients (86.2%) were PDE5-i responders. In all, 37.9% of patients were smokers, 19.0% were past smokers and 43.1% have never smoked. Table 1 describes patients' background diseases with an emphasis on some of the main risk factors for vasculogenic ED.

Patients' baseline IIEF-EF score ranged between 6 and 25 points with an average of 14.8. Table 2 summarizes the effect of low-intensity extracorporeal shockwave therapy on the IIEF-EF scores, according to the baseline ED severity.

A moderate negative Pearson correlation coefficient of -0.62 was found between the duration of ED and success of treatment. Figure 4 describes the change in the IIEF-EF score between baseline and the follow-ups at 1, 3 and 6 months post treatment, according to the duration of ED. The percentage of patients who have answered 'Yes' to questions 2 and 3 of the SEP was calculated at baseline and at 1-, 3- and 6-month follow-up and is presented in Figure 5.

The percentage of patients who have answered 'Yes' to questions 1 and 2 of the GAQ was calculated at 1-, 3- and 6-month follow-up; for question 1, the percentages were 74.14%, 82.76% and 89.66%, respectively. For question 2, the percentages at 1-, 3- and 6-month follow-up were 63.79%, 68.97% and 75.86%, respectively.

Table 1. Patients' comorbidities with an emphasis on some of the main risk factors for vasculogenic ED: cardiovascular diseases; diabetes; hypertension; and high cholesterol

Disease	Cardiovascular disease	Diabetes	Hypertension	High cholesterol
Prevalence (%)				
27.6				
19.0	✓	✓	✓	✓
10.3				✓
10.3	✓	✓		
8.6		✓		
8.6		✓		✓
6.9		✓	✓	✓
1.7	✓	✓	✓	
1.7	✓			✓
1.7		✓	✓	
1.7	✓	✓		
1.7	✓			

Table 2. The results of the IIEF-EF, before and at 6 months following low-intensity extracorporeal shockwave therapy

Baseline ED severity	Number of patients	PDE5-i responders	Baseline IIEF-EF AVG \pm s.d.	IIEF-EF improvement points AVG \pm s.d.	% Success	P-value
Severe	13	69.23%	8.5 ± 1.2	8.5 ± 6.3	61.54	< 0.001
Moderate	22	86.36%	13.3 ± 1.8	8.3 ± 5.1	77.27	< 0.001
Mild to moderate	18	94.44%	18.6 ± 1.5	6.8 ± 3.0	94.44	< 0.001
Mild	5	100.00%	23.6 ± 1.3	3.6 ± 0.5	100.00	< 0.001
Total	58	86.2%	14.8 ± 4.8	7.5 ± 4.7	81.03	< 0.001

Abbreviations: ED, erectile dysfunction; IIEF-EF, International Index of Erectile Function-Erectile Function Domain; PDE5-i, phosphodiesterase type 5 inhibitors. Two-tailed *t*-test was performed on the IIEF-EF scores of each group of ED severity before Renova treatment and at 6-month follow-up.

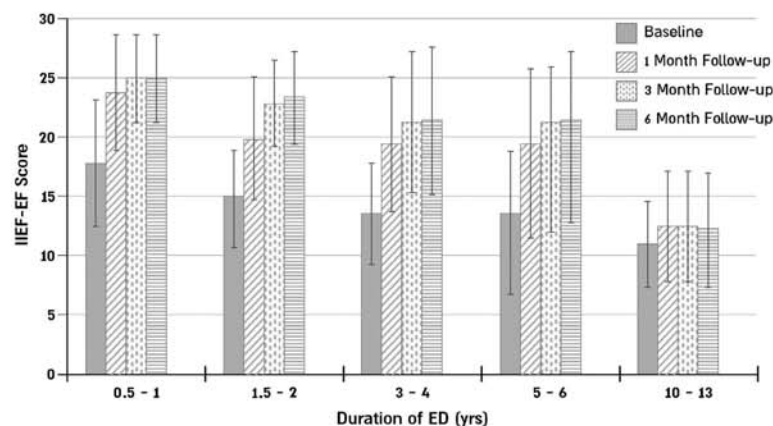


Figure 4. The change in the IIEF-EF score between baseline and the follow-ups at 1, 3 and 6 months post treatment, in accordance with the ranges of ED duration. The error bars indicate the s.d. of each group.

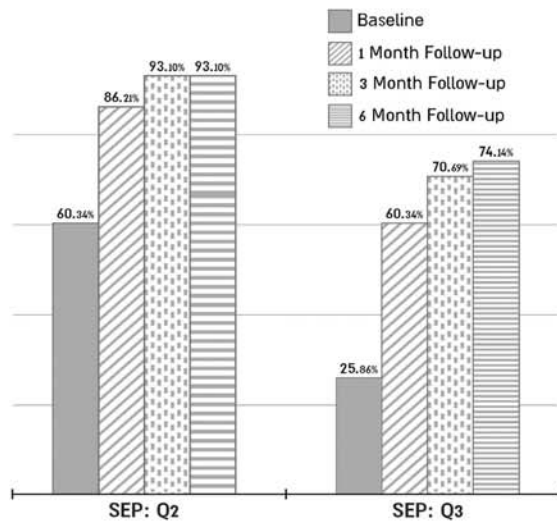


Figure 5. the average results of SEP questions 2 and 3 at the baseline and at each follow-up. The percentages represent the fraction of patients who have answered 'Yes' to each of these questions.

The difference between the IIEF-EF scores and the SEP answers, from baseline to the third follow-up was remarkable and has a statistical significance, with a P -value of < 0.001 .

LISW treatment has succeeded in $>80\%$ of the cases (47 patients). Among the successful patients, the average IIEF-EF score increase was nine points.

When comparing diabetic patients and nondiabetic patients, the success rate of the latter group was 25% higher (70.83% and 88.24%, respectively). In all, 41.4% of patients in this study were diabetic (24 patients) and there was no significant difference between age and ED duration of the diabetic and nondiabetic patients (57.45 and 56.25 years, 2.90 and 2.96 years, respectively). This may indicate on better suitability of this treatment to nondiabetic patients.

Among the 58 patients, 4 patients stopped using PDE5-i during follow-up as they had no need for it.

No adverse events or complications were reported during and following treatment.

During the treatment period and thereafter, no use of analgesics was needed.

DISCUSSION

This study is the first study that shows a successful treatment with LISW for vascular ED in a multicenter manner, which is not connected to the previous publications and from different sites than the previous publications.³⁻⁴

When compared with previously described studies, in which PDE5-i were used, the results of this study are in line, with similar success rates.³⁻⁴

This study included patients with mild to severe ED symptoms, whereas 22.4% of patients had severe symptoms, 37.9% moderate, 31.0% mild to moderate and 8.6% mild. The average baseline IIEF-EF was 14.8 points, which represents moderate ED symptoms.

When comparing the success rate between groups of other comorbidities, no strong correlation was found. Owing to the small sample size, more research is required.

Almost 28% of the patients didn't have any of the following vascular ED risk factors: cardiovascular disease; diabetes; hypertension; and high cholesterol. The success rate of patients who

had at least one of the diseases listed above was 76.2%, whereas the success rate of patients without any of these diseases was 93.7%. There were no significant differences between the age, duration of ED and percentage of PDE5-i responders between patients with at least one of the listed disease and patients without any of these diseases (57.3 and 55.3 years, 3.0 and 2.7 years, 85.7% and 87.5%, respectively). The percentage of smokers was higher in the group of patients without any of the listed diseases (62.5%) compared with the second group (54.8%). Out of the first group, all patients who were nonsmokers (10.3% of all patients) succeeded in the treatment.

The ED duration of failed patients was on average longer than the ED duration of the whole group, with 6.4 and 2.9 years, respectively. As seen in Figure 3, the increase in IIEF-EF score decreases as the ED duration rises. Satisfactory success rates were shown in cases of ED that started up to 10 years previously, and even higher success rates were demonstrated on patients who recently noticed a decrease in erectile function. The average results are very disappointing for patients with ED for > 10 years, so it seems this treatment is not adequate for such patients whereas average results are satisfactory for patients with ED for 5–6 years or less.

A comprehensive research is required for designing a modified protocol that would be suitable for cases of longtime ED.

When considering the numerical change in IIEF-EF, only six patients (10%) have not experienced any change in their erectile function.

When reviewing the change in SEP scores, a significant increase between baseline and follow-up is noticeable. These questions can indicate directly on the patients erectile function condition, as they are referring directly to the patient's ability to perform successful intercourse.

When reviewing the individual answers for the GAQ questionnaires, it appears that 75% of the patients (44 patients) have answered 'Yes' to both questions. As these questions are intended to evaluate the treatment, these results indicate a successful treatment and support the results found with the IIEF-EF scores.

When looking at the percentage of almost 7% of patients who stopped using PDE5-i after the treatment, this could perhaps be one of the next steps in the development of this treatment option, and might be a viable option for patients who are not satisfied with the effect of PDE5-i or that these drugs are contraindicated for them.

The specifically designed device, which has a specialized transducer that is configured to reach the exact treated areas, is able to treat a bigger area than other previously used devices and therefore enables a better adjustment to the patient's body, a shorter duration of treatment and a better coverage.

This pilot study on a small number of ED patients with a relatively short follow-up shows encouraging results. Large multicenter, long-term, randomized and sham-controlled studies are needed to be able to evaluate and define those patients who respond to this type of treatment. More data are also needed with regard to the possible long-term impact of shockwaves on penile tissue. More basic research is needed to be able to understand the mechanism of action of LISW on tissues.

CONCLUSIONS

The initial results of this pilot study suggest positive outcomes of this second generation technology for treating ED with linear low-intensity shockwaves. This study with 6 months follow-up from almost 60 patients is suggestive of a positive therapeutic efficiency in the majority of the patients. Pain is tolerated by 100% of the treated patients and no side effects have been recorded, demonstrating the potential of this technology, as a treatment option for men who are not satisfied by the currently available solutions.

CONFLICT OF INTEREST

The authors declare no conflict of interest.

ACKNOWLEDGMENTS

Direx Group provided the treatment device (Renova), which generates linear focused shockwave.

REFERENCES

- 1 Stief C *et al*. Physiology and pathophysiology of men's sexual arousal and penile erection. In: Montorsi F *et al*. (eds). *Sexual Medicine Sexual Dysfunctions in Men and Women*. 3rd International Consultation on Sexual Medicine. Health Publication Ltd: Paris, 2010, pp 605–680.
- 2 Ito K, Fukumoto Y, Shimokawa H. Extracorporeal shock wave therapy as a new and non-invasive angiogenic strategy. *Tohoku J Exp Med* 2009; **219**: 1–9.
- 3 Vardi Y, Appel B, Jacob G, Massarwi O, Gruenwald I. Can low-intensity extracorporeal shockwave therapy improve erectile function? A 6-month follow-up pilot study in patients with organic erectile dysfunction. *Eur Urol* 2010; **58**: 243–248.
- 4 Vardi Y, Appel B, Kilchevsky A, Gruenwald I. Does low intensity extracorporeal shock wave therapy have a physiological effect on erectile function? Short-term results of a randomized, double-blind, sham controlled study. *J Urol* 2012; **187**: 1769–1775.
- 5 Qiu X. Effects of low-energy shockwave therapy on the erectile function and tissue of a diabetic rat model. *J Sex Med* 2013; **10**: 738–746.
- 6 Rosen RC, Allen KR, Ni X, Araujo AB. Minimal clinically important differences in the erectile function domain of the International Index of Erectile Function scale. *Eur Urol* 2011; **60**: 1010–1016.
- 7 Rosen RC, Cappelleri JC, Gendrano N 3rd. The International Index of Erectile Function (IIEF): a state-of-the-science review. *Int J Impot Res* 2002; **14**: 226–244.
- 8 Hatzichristou D *et al*. Clinical evaluation and symptoms scales in men and women with sexual dysfunction. In: Montorsi F *et al*. (eds). *Sexual Medicine Sexual Dysfunctions in Men and Women*. 3rd International Consultation on Sexual Medicine. Health Publication Ltd: Paris, 2010, pp 229–280.
- 9 Porst H *et al*. Standards for clinical trials in male sexual dysfunctions. In: Montorsi F *et al*. (eds). *Sexual Medicine Sexual Dysfunctions in Men and Women*. 3rd International Consultation on Sexual Medicine. Health Publication Ltd: Paris, 2010, pp 567–603.



Safety and Efficient Duration of Linear Focused Shockwave Treatment for Erectile Dysfunction – A 12 months Follow-up Pilot Study

Y. Reisman

Men's Health Clinic, Bovenij Hospital, Amsterdam, The Netherlands

Objective

The aim of this pilot study was to assess the safety, effectiveness and sustainable results of the Linear Focused Shockwave system Renova, for the treatment of Vascular Erectile Dysfunction patients.

Material and methods

Renova is a system that uses a Linear Low Intensity Shockwave technology. We have treated 20 patients with Vasculogenic ED; with an averaged International Index of Erectile Function (IIEF-EF) score of 12.35 ± 3.16 (Range 7-18). The protocol consisted of 4 weekly sessions, in which a total of 3600 shockwaves were applied, divided into 4 areas; right and left crura, and right and left corpus cavernosum, 900 shockwaves in each site. The following questionnaires were used: IIEF-EF, Sexual Encounter Profile (SEP) and Global Assessment Question (GAQ), at baseline visit and 1, 3, 6 and 12 months post treatment. Success was defined as an increase in score from baseline to the 6 months post treatment follow-up, according to Minimal Clinical Improvement Criteria (Rosen et al.).

Results

At the 6 months follow-up, 18 patients out of 20 showed success (90%). Out of these 90%, **83.3% (15 patients) sustained the positive outcome for a period longer than 12 months** after the end of treatment. The average IIEF-EF increased significantly from 12.35 ± 3.16 at baseline to 20.65 ± 2.64 at 6 months post treatment, and was 18.65 ± 2.56 at the 12 month follow-up. Four patients (20%) who were non-responsive to Phosphodiesterase type 5 Inhibitors (PDE5i) at baseline became responsive after the treatment, and 2 patients (10%)

INFO@DIREXGROUP.COM

DIREX

WWW.DIREXGROUP.COM

LSWT – CLINICAL DATA AND REPORTS

successfully stopped using PDE5i. All 20 patients completed the last follow-up with an average of 14.5 ± 1.08 months duration from the end of treatment. Among the successful patients, the average IIEF-EF score increase was 8.3 points. No side effects were reported.

Conclusions

With a success rate of 90% after 6 months, and an 83.3% sustainable positive effect after 1 year, the results of this pilot study suggest that this treatment is probably effective for at least 1 year. No anaesthesia or analgesia was needed, and no adverse effects were recorded, making it a potential good alternative for current available treatments.

The above paper abstract was presented at the 16th World Meeting on Sexual Medicine, on October 11th 2014, Sao-Paulo, Brazil.



Long Term Efficacy of Low Intensity Linear Focused Shockwave Therapy for Vascular Erectile Dysfunction Patients: 20 months follow-up

A. Casarico, P. Puppo

Montallegro Clinic, Genova, Italy

Objective

Erectile dysfunction is a common medical disorder that primarily affects men older than 40 years of age [1]. Phosphodiesterase type 5 inhibitors (PDE5i) are considered as first-line therapy as they increase arterial blood flow leading to smooth muscle relaxation, vasodilatation and penile erection [2]. The limitation in the efficacy of PDE5i is that a 'critical amount' of NO is necessary for these drugs to work. Therefore, in cases of impairment in NO synthesis or release or in cases of destruction of NO, PDE5i cannot cure erectile dysfunction (ED) symptoms [3].

Lately, studies have started to evaluate the effect of low intensity shockwave (LISW) to treat ED on PDE5i responders and non-responders patients [4-8].

The current study evaluated how the therapy by a new device ('RENOVA', Direx Group) using low-intensity linear focused shockwave, exerts effective and sustainable results at long term follow-up on patients who suffer from ED of vascular origin and experience full, partial or no response at all to PDE5i.

Materials and Methods

This study was conducted in an outpatient clinic from March to December 2013. Eligible patients were those suffering from Vasculogenic ED for at least 6 months, and their International Index of Erectile Function score (IIEF-EF, [9]) was between 9 and 25 (while on PDE5i). Patients who had hormonal, neurological or psychological pathology or had undergone radical prostatectomy were excluded.

LSWT – CLINICAL DATA AND REPORTS

During the treatment period and 3 weeks prior to it, no PDE5i were used.

The treatment consisted of 4 weekly sessions. Shockwaves were delivered with a maximum energy of 0.09mJ/mm²; therefore, no anesthesia was required. At the end of the full treatment a total of 20000 SW had been delivered (6400 shocks at each crura, 3600 shocks at each corpus).

Erectile function was evaluated by means of IIEF-EF, questions 2-3 of the Sexual Encounter Profile (SEP), questions 1-2 of the Global Assessment Questions (GAQ) and the Erection Hardness Score (EHS), at baseline and at 1, 3 and 6 months post treatment. Success was defined as positive answer to both SEP questions and both GAQ questions, EHS of 3 or higher and an increase of IIEF-EF score from baseline to the third follow up (6 months post treatment) according to the severity of the symptoms [10].

Out of 25 patients enrolled to this study, 24 finished the full treatment series. The mean age of these patients was 62.58 ± 8.32 (45-74) years and the mean duration of their ED was 4.84 ± 4.46 (1-20) years. 52% were smokers, 26% had diabetes, 58% had high cholesterol levels, 37% had a cardiovascular disease and 47% had hypertension. 75% of the patients had a positive response to PDE5i.

At the end of the treatment and during the follow-up period patients were using PDE5i as needed.

14 patients out of 19 patients who had a successful result in all evaluation parameters at 6 months follow-up were evaluable for long-term follow up (15-21 months; mean 19.8 months) They completed again all the questionnaires.

Results

At 6 months follow-up the overall percentage of patients who achieved positive outcomes at all 4 evaluation questionnaires was 79%.

33% of the PDE5i non-responders (2/6) and 94% of the responders (17/18) achieved positive outcomes at all 4 evaluation questionnaires.

44.4% of the responders stopped using PDE5i at 6 month follow-up. None of the patients have reported on pain during or after treatment. No adverse events were reported.

11/14 patients (78.5%) who had a successful result at 6 months FU, and were evaluable for long-term FU, maintained the advantage gained.

2 patients, PDE5i non responders, continued to respond to PDE5i. Their IIEF at long term FU was respectively 19 (+1) and 23 (-2).

9 patients, PDE5i responders, lost 4 points combined at IIEF-6 (5 patients with unchanged scores, 1 patient dropped from 29 to 27, 1 patient gained 1 point from 26 to 27, 1 patient

LSWT – CLINICAL DATA AND REPORTS

dropped from 25 to 23 and the last patient dropped from 27 to 26); SEP and GAQ were unchanged; EHS was reduced from 4 to 3 in only 1 patient and was maintained at 4 in 4 patients.

5 out of these 9 patients had successful intercours without PDE5i or used them occasionally. 3/14 patients (21.4%) did not maintain the advantage gained at the long term FU. IIEF (while on PDE5i), was 20/24/21, 15 points lower (-9/-2/-4) than at 6 months FU; SEP was unchanged (2); EHS was 1 point lower (from 4 to 3) in 1 patient; GAQ dropped from 2 to 0 in all 3 patients.

Discussion

This pilot study was designed for assessing the long term efficacy of a novel device for the treatment of erectile dysfunction, based on an original technology that enables the delivery of low-intensity shockwaves onto a long focal area. The subjects in this study included also patients with multiple co-morbidities, different degrees of response to PDE5i and wide range of ED severities. The results of this study demonstrate a possible alternative treatment for some of the patients who did not respond to first-line oral pharmacotherapy and thanks to this treatment may avoid turning to other therapy options which are less convenient to use. In parallel, these data imply on a potential mean to eliminate the need for PDE5i which may significantly improve patients' quality of life.

At 6 months FU, an overall success in 79% of the patients was shown, that was maintained by 78.5% of these at longer FU (19.8 months mean). 55% of PDE5i responders (at baseline evaluation) continued to have successful intercours without use of PDE5i or using them occasionally.

Conclusion

A growing number of men develop vascular erectile dysfunction because of multiple comorbidities such as diabetes, hypertension, heart disease, dyslipidemia or smoke. PDE5i, alprostadil injections, vacuum constriction devices and surgical treatment are symptomatic therapies and do not help patients to achieve spontaneous erections. Moreover medications are contraindicated in some conditions and may have side effects. LISWT, is a promising, minimally invasive therapy without side-effects that induce the release of endothelial nitric oxide synthase, vascular endothelial growth factors and proliferating cell nuclear antigen and thus enhance neovascularization of the penis.

LSWT – CLINICAL DATA AND REPORTS

The long-term follow up shows that the vast majority of patients who achieved a positive result from treatment with 20000 low intensity linear shock waves, delivered in 4 weekly sessions, continues to maintain the advantage gained after 19.8 months.

The effect of treatment wanes gradually only in 21.4% of the patients.

There is a need for further research to determine if modifications in the treatment protocol (number and intensity) of low-intensity linear focused shockwave could make the positive effect last longer and if an additional treatment could be useful for patients who did not have or lost a successful result from the treatment.

References

1. Rany Shamloul, Hussein Ghanem. Erectile dysfunction. *Lancet* 2013; 381: 153–65.
2. Eric Wespes, Edouard Amar, Dimitrios Hatzichristou, Kosta Hatzimouratidis, Francesco Montorsi, John Pryor, Yoram Vardi. EAU Guidelines on Erectile Dysfunction: An Update. *European Urology* 49 (2006) 806–815.
3. Inigo Sáenz de Tejada. Therapeutic strategies for optimizing PDE-5 inhibitor therapy in patients with erectile dysfunction considered difficult or challenging to treat. *International Journal of Impotence Research* (2004) 16, S40–S42.
4. Ilan Gruenwald, Boaz Appel and Yoram Vardi. Low-Intensity Extracorporeal Shock Wave Therapy—A Novel Effective Treatment for Erectile Dysfunction in Severe ED Patients Who Respond Poorly to PDE5 Inhibitor Therapy. *J Sex Med* 2012;9:259–264.
5. Yoram Vardi, Boaz Appel, Giris Jacob, Omar Massarwi, Ilan Gruenwald. Can Low-Intensity Extracorporeal Shockwave Therapy Improve Erectile Function? A 6-Month Follow-up Pilot Study in Patients with Organic Erectile Dysfunction. *European Urology* 58 (2010) 243–248.
6. Yoram Vardi, Boaz Appel, Amichai Kilchevsky and Ilan Gruenwald. Does Low Intensity Extracorporeal Shock Wave Therapy Have a Physiological Effect on Erectile Function? Short-Term Results of a Randomized, Double-Blind, Sham Controlled Study. *The Journal of Urology* 187 (2012) 1769–1775.
7. Ilan Gruenwald, Noam D Kitrey, Boaz Appel, and Yoram Vardi. Lowintensity extracorporeal shock wave therapy in vascular disease and erectile dysfunction: Theory and outcomes. *Sex Med Rev* 2013; 1: 83–90.
8. Anne B Olsen, Marie Persiani, Sidesel Boie, Milad Hanna, Lars Lund. Can low-intensity extracorporeal shockwave therapy improve erectile dysfunction? A prospective, randomized, double-blind, placebo-controlled study. *Scand J Urol* 2014 Dec 3:1-5. [Epub ahead of print]
9. Rosen RC, Cappelleri JC, Gendrano N 3rd. The International Index of Erectile Function (IIEF): a state-of-the-science review. *Int J Impot Res.* 2002 Aug; 14(4): 226-44.

LSWT – CLINICAL DATA AND REPORTS

10. Rosen RC, Allen KR, Ni X, Araujo AB. Minimal clinically important differences in the erectile function domain of the International Index of Erectile Function scale. Eur Urol. 2011 Nov; 60(5): 1010-6.

The above paper abstract was presented at the 22nd National Congress of the Italian Urological Association, on May 24th 2015, Bologna, Italy.



Initial Clinical Experience of Linear Focused, Low Intensity Shockwave for Treatment of ED Patients with Different Severity Symptoms

N. Cruz¹, A. Morales²

¹Clinica Andromedi Sevilla, ²Instituto de Urología Málaga

Objective

The aim of this clinical experience was to assess the feasibility of the application of Linear Focused Low Intensity Shockwaves (Renova Direx Group) as an alternative or complementary treatment for Vascular ED patients with different degrees of symptom severity.

Material and methods

The treatment was offered in a routine natural way in 2 medical centers: 46 patients in Malaga (series A), and 35 in Sevilla (Series B). The treatment was composed of 4 weekly sessions, in which shockwaves were applied into 4 areas: right and left crura, and right and left corpus cavernosum, with 900 shockwaves in each site (Total 14400). No need for anesthesia, sedation or painkillers and each session's treatment time was 20 minutes. The evaluation was done using the IIEF-EF, SEP and GAQ questionnaires, at baseline visit, 1 month and 3 months post treatment.

Results

The average IIEF-EF increased significantly from 19.94 and 14.03 at baseline to 23.92 and 18.53 at 3 months post treatment. A number of patients stopped using PDE5-i; 30.77% and 23.53% respectively. SEP 2 increased from 88.89% and 43.48% to 100% and 66.67%. The SEP 3 increased from 38.89% and 27.59% to 78.75% and 57.89%.

At baseline, the use of PDE5-i for sexual intercourses was needed by 77.78% and 85.19% of patients, and was reduced to 53.85% and 35.29% at 3 months post treatment. No side effects were recorded.

INFO@DIREXGROUP.COM

DIREX

WWW.DIREXGROUP.COM

Conclusions

The results of both series at 3 months show a consistent and global improvement in IIEF-EF, SEP 2 and SEP 3 parameters. Since the baseline symptoms severity of patients in series B was much higher compared to series A, the end results obtained in series B are consistently lower compared to series A.

This would imply that the outcome of the treatment is related to the baseline symptoms severity, meaning that in average, patients with more severe ED symptoms will improve, but will not reach the final level of improvement that can be obtained by mild to moderate patients. In our experience the Linear-Focused Low Intensity Shockwave treatment is a valid alternative or complement to current available treatments.

The above paper abstract was presented at the 16th World Meeting on Sexual Medicine, on October 11th 2014, Sao-Paulo, Brazil.



Efficacy and Safety of Linear Focused Shockwaves for Erectile Dysfunction (RENOVA) – A Second Generation Technology

Y. Reisman¹, A. Hind², A. Varaneckas³, I. Motil⁴

¹Men's Health Clinic, Bovenij Hospital, Amsterdam, The Netherlands, ²Urology and Andrology Center, Red Crescent Hospital (RCH), Ramallah, Palestine, ³Amber Clinic, Klaipėda, Lithuania, ⁴Uroclinic Brno, Brno, Czech Republic

Introduction

Recent studies have demonstrated that low intensity shockwaves have a therapeutic effect on ED of vascular origin.

Objective

The present study was aimed to assess the efficacy and safety of a dedicated shockwave device, Renova, which was designed to achieve substantially superior organ coverage.

Material and Methods

52 patients with mild to severe ED were treated by Renova as part of a multi-center, open-label, prospective pilot study, conducted at 4 sites. Patients underwent 4 weekly treatment sessions by a Renova that generates line focused shockwaves. Patients' erectile function was assessed by the IIEF-EF, SEP and GAQ questionnaires at baseline and at 1 and 3 months post treatment. Success was defined as an increase of IIEF-EF score from baseline to the second follow up according to the severity of the symptoms at baseline.

Results

The average IIEF-EF greatly increased from 14.7 at baseline to 21.4 at 1 month and 3 months post treatment. **Out of 52 patients, 41 (79%) had a successful treatment.** No adverse events

LSWT – CLINICAL DATA AND REPORTS

were reported during the treatment and the follow-up duration. Main outcomes are presented in the following table:

Age	Baseline IIEF-EF	Improvement in IIEF-EF	P value	% Success
57.2 ± 10.1	14.7 ± 4.9	6.8	<0.0001	78.8%

Conclusions

The results of this study indicate success of the second generation technology for treating ED with linear low-intensity shockwaves. Initial follow up data demonstrate a therapeutic success in almost 80% of patients. No side effects have been recorded, demonstrating the suitability of this treatment in an office setting.

The above paper abstract was presented at the 12th Congress of the Latin American Society for Sexual Medicine, on August 29th 2013, Cancun, Mexico.



Low intensity shock wave (LISW) treatment (Renova) to improve male sexual function: A preliminary data on 42 patients

F. Iacono, A. Ruffo, D. Prezioso, G. Romeo, E. Illiano, L. Romis, G. Di Lauro
Centro Urolab, Napoli, Italy

Objective

The aim of our study is to investigate the safety and efficacy of Low intensity Extracorporeal shock wave therapy LI-ESWT (Renova) in the treatment of erectile dysfunction.

Methods

We enrolled 47 patients with erectile dysfunction (ED). They underwent four weekly sessions using a dedicated device (Renova) for the management of erectile dysfunction. The treatment included four weekly sessions. During each treatment session, LI-ESWT was applied at four different anatomical areas, right and left corpus cavernosum and right and left crus penis (900 shocks, 0.09 mJ/mm² intensity at 240 shocks/min at each site for a total of 3600 shocks). Patients were followed at one month after treatment. Two self-administered questionnaires: International Index of Erectile Function-Erectile Function (IIEF-ED), Sexual Encounter Profile (SEP- Questions 2 and 3) were given to patients to assess their sexual function pre and post treatment.

Results

Five patients dropped out of treatment, so forty-two patients (mean age was 59.2 years) were evaluated. At one month follow-up, we noticed a statistically significant improvement in IIEF-ED domain scores in treated patients (from a mean of 12+/- 4.8 at baseline to 23.5+/- 5.3, $p<0.05$). **SEP-Q2 and SEP-Q3 success rates improved from 57% to 84% and from 24% to 76% respectively.** No side effects were reported.

LSWT – CLINICAL DATA AND REPORTS

Conclusion

(LI) ESWT improves male sexual function inducing neovascularization in the treated tissues by stimulating the expression of angiogenesis-related growth factors, such as endothelial nitric oxide synthase, vascular endothelial growth factor, and endothelial cell proliferation factors, such as proliferating cell nuclear antigen. This therapy shows a statistically significant clinical improvement of erectile function without any side effect or contraindication. In our opinion further studies are needed even to assess the possibility to repeat the treatment cyclically or in association with PDE5-i or with nutraceutical composite.

The above paper abstract was presented at the 16th Congress of the European Society for Sexual Medicine (ESSM), on February 1st 2014, Istanbul.



Low Intensity Linear Focused Shockwave Therapy: a New Treatment to Improve the Quality of Life of Vascular Erectile Dysfunction Patients

P. Puppo, A. Casarico

Montallegro Clinic, Genova, Italy

Objective

Erectile dysfunction is a common medical disorder that primarily affects men older than 40 years of age. Phosphodiesterase type 5 inhibitors (PDE5i) are considered as first-line therapy as they increase arterial blood flow leading to smooth muscle relaxation, vasodilatation and penile erection. The limitation in the efficacy of PDE5 inhibitors is that a 'critical amount' of NO is necessary for these drugs to work. Therefore, in cases of impairment in NO synthesis or release or in cases of destruction of NO, PDE5 inhibitors cannot cure erectile dysfunction (ED) symptoms.

The correlation between potency and quality of life was established by a study on 1680 men seeking medical attention in a free screening program at three different locations in the USA. Unsurprisingly, it was reported that potent men have a better quality of life than impotent men.

Lately, studies have started to evaluate the effect of low intensity shockwave (LISW) to treat ED on PDE5i responders and non-responders patients.

The current study evaluated how the therapy by a new device ('RENOVA', Direx Group) using low-intensity linear focused shockwave affects the quality of life of patients who suffer from ED of vascular origin and experience full, partial or no response at all to PDE5 inhibitors.

Methods and results

This study was conducted in an outpatient clinic over a period of 10 months. Eligible patients were those who have been suffering from Vasculogenic ED for at least 6 months, and their International Index of Erectile Function score in the erectile function domain (IIEF-EF) was between 9 and 25. Patients who had hormonal, neurological or psychological pathology or have undergone radical prostatectomy were excluded.

INFO@DIREXGROUP.COM

DIREX

WWW.DIREXGROUP.COM

LSWT – CLINICAL DATA AND REPORTS

The treatment consisted of 4 weekly sessions; in each session 4 areas were treated consecutively: left and right sides of the Crura and the Corpora Cavernosa. Shockwaves were delivered with a maximum energy of 0.09mJ/mm²; therefore, no anesthesia was required. During the treatment period (22 days) and 3 weeks prior it, no phosphodiesterase type 5 inhibitors (PDE5-I) were used.

Erectile function was evaluated by means of IIEF-EF, questions 2-3 of the Sexual Encounter Profile (SEP), questions 1-2 of the Global Assessment Questions (GAQ) and the Erection Hardness Score (EHS), at baseline and at 1, 3 and 6 months post treatment. Success was defined as positive answer to both SEP and GAQ questions, EHS of 3 or higher and an increase of IIEF-EF score from baseline to the third follow up (6 months post treatment) according to the severity of the symptoms.

Out of 25 patients who were enrolled to this study, 24 have finished the full treatment series. The mean age of these patients was 62.58 ± 8.32 (45-74) years and the mean duration of their ED was 4.84 ± 4.46 (1-20) years. 52% were smokers, 26% had diabetes, 58% had high cholesterol levels, 37% had a cardiovascular disease and 47% had hypertension. 74% of the patients had a positive response to PDE5 inhibitors.

All patients were instructed to use PDE5 inhibitors during the 4 weeks prior baseline evaluation. At the end of the treatment and during the follow-up period patients were using PDE5 inhibitors as needed.

At the most recent follow-up of each patient, 40% of the PDE5i non-responders and 78% of the responders achieved positive outcomes at all 4 evaluation questionnaires. 42.8% of the responders stopped using PDE5 inhibitors at 6 month follow-up. Out of these patients, 83% achieved positive outcomes at all 4 evaluation questionnaires. **The overall percentage of patients who achieved positive outcomes at all 4 evaluation questionnaires was 70%.** None of the patients have reported on pain during or after treatment. No adverse events were reported.

Discussion

This pilot study was designed for assessing the efficacy of a novel device dedicated for the treatment of erectile dysfunction and based on an original technology that enables the delivery of low-intensity shockwaves onto a long focal area. The subjects in this study included also patients with multiple co-morbidities, different degrees of response to PDE5 inhibitors and wide range of ED severities. The results of this study demonstrate a possible alternative treatment for some of the patients who did not respond to first-line oral pharmacotherapy and thanks to this treatment may avoid turning to other therapy options which are less convenient

LSWT – CLINICAL DATA AND REPORTS

to use. In parallel, these data imply on a potential mean to eliminate the need for PDE5 inhibitors which may significantly improve patients' quality of life. In order to establish the overall effect of this treatment on the quality of life of ED patients, a larger study with longer follow-up duration is required.

The above paper abstract was presented at the 21st National Congress of the Italian Urology Association, on June 2014, Rome, Italy.



Linear Low Intensity Shockwaves Treatment of Vasculogenic ED – First Results

Motil¹, T. Šramkova²

¹Urology Ajem, Brno, Czech Republic, ²Department of Sexology, Brno University Hospital, Czech Republic

Introduction and Objectives

ED is significantly associated with: increased age, diabetes, cardiovascular disease, hypertension, depression, smoking, medications, and has a multifactorial etiology with physical and psychological factors.

The treatment options currently offered to patients are: drugs that reversibly inhibit penile-specific PDE5 and enhance the nitric oxide–cyclic GMP pathways of cavernous smooth muscle relaxation, vacuum constriction device, intraurethral and intracorporeal alprostadil, or surgical treatment-implantation of penile prosthesis.

Our aim was to assess the safety and efficacy of a unique Linear Shockwave Therapy for Vasculogenic ED patients in a prospective trial (PT).

Materials and Methods

22 men with vasculogenic ED completed this open-label, prospective pilot study. In order to compare our own results (22 men) we included the outputs of 3 other European LSWT centers. Finally, an overall of 69 (22+47) patients with mild to severe ED were treated using the Renova device and were evaluated.

The evaluation of success was made according to the IIEF-EF questionnaire, which was filled at baseline, and 1, 3 and 6 months post treatment.

LSWT – CLINICAL DATA AND REPORTS

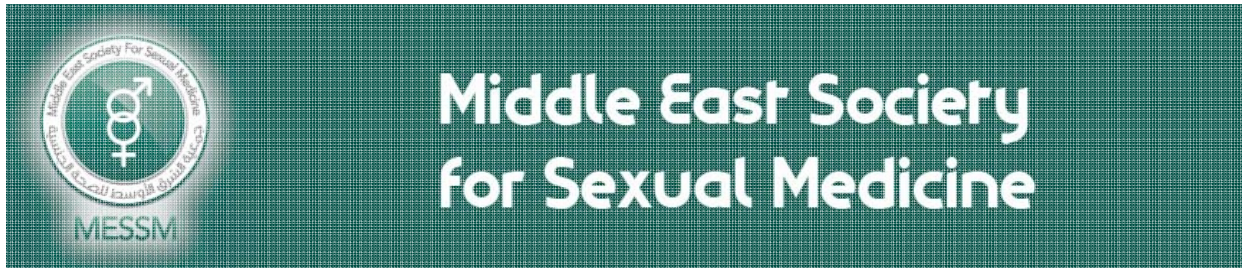
Results

The average IIEF-EF increased significantly from 14.7 at baseline to 21.6 at 1 month and 3 months post treatment. **82% of patients had a successful treatment.** No adverse events were reported during the treatment and the follow-up duration.

Conclusions

We have been able to prove that Linear SWT is an effective therapeutic option for men with erectile dysfunction of vasculogenic origin. Moreover the efficacy of linear application of low-intensity extracorporeal shock waves is superior to former non-linear methods.

The above paper abstract was presented at the 102nd Annual Meeting of the Japanese Urological Association (JUA), on April 21st 2014, Kobe, Japan.



Efficacy and Safety of Linear Focused Shockwaves for Erectile Dysfunction (RENOVA) – A Second Generation Technology

Y. Reisman¹, A. Hind², A. Varaneckas³, I. Motil⁴

¹Men's Health Clinic, Bovenij Hospital, Amsterdam, The Netherlands, ²Urology and Andrology Center, Red Crescent Hospital (RCH), Ramallah, Palestine, ³Amber Clinic, Klaipėda, Lithuania, ⁴Uroclinic Brno, Brno, Czech Republic

Introduction

Vasculogenic erectile dysfunction (ED) which is caused by arteriosclerosis can be treated by a variety of therapies that aim at reducing ED symptoms. Low-intensity shockwaves (LISW) were discovered as an enhancing factor to angiogenesis for treating ischemic heart disease. In addition, LISW therapy demonstrated significantly the restoration of erectile function in diabetic rats. The present study evaluates the therapeutic effect of LISW produced by an innovative device on patients with erectile dysfunction.

Objective

The present study was aimed to assess the safety and efficacy of a dedicated shockwave device, 'Renova', which was designed to achieve substantially superior organ coverage.

Material and Methods

57 patients with mild to severe ED were treated by Renova as part of a multi-center, open-label, prospective pilot study, conducted at 4 sites. Patients underwent 4 weekly treatment sessions by a novel machine (Renova) that generates line focused shockwaves at 4 treated areas: right and left crus and right and left corpus cavernosum. Each treatment session lasted approximately 15 minutes, did not required anesthesia and did not cause any pain or adverse effects. Patients' erectile function was assessed by the IIEF-EF, SEP and GAQ questionnaires at baseline and at 1 and 3 months post treatment. Success was defined as an increase of IIEF-

LSWT – CLINICAL DATA AND REPORTS

EF score from baseline to the second follow up according to the severity of ED symptoms at baseline.

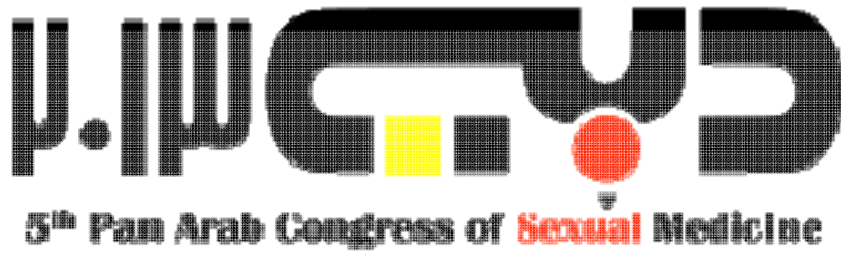
Results

The average IIEF-EF score has greatly increased from 14.7 at baseline to 21.6 at 1 month and 3 months post treatment. **Out of 57 patients, 47 (82%) had a successful treatment.** Among the successful patients, the average IIEF-EF score increase was 8 points. No adverse events were reported during the treatment and the follow-up duration.

Conclusions

The results of this study indicate success of the second generation technology for treating ED with linear low-intensity shockwaves. Initial follow up data from almost 60 patients demonstrate a clear therapeutic success in 82% of patients.

The above paper abstract was presented at the 2nd Biennial Meeting of the Middle East Society for Sexual Medicine, on November 2013, Dubai.



Line Focused Shockwave for Erectile Dysfunction – A Different Technological Approach

A. Hind, O. Saleh, Y. Abu Asbeh

Urology and Andrology Center, Red Crescent Hospital (RCH), Ramallah, Palestine

Introduction

During the last 2 years a new technology was introduced to treat Erectile Dysfunction. The treatment uses Low Intensity Shockwave which was shown to produce angiogenesis in order to improve the patient erectile function for patients of Vasculogenic origin ED. The initial treatments were done with conventional orthopedic treatment shockwave devices, and although results were encouraging, they have a series of limitations.

We are presenting our initial results with a new type of Low Intensity shockwave system that was specifically developed to treat ED.

Patients and Methods

Instead of focusing the shockwave into a focal point, like in any conventional lithotripter, Renova system (DirexGroup) shockwaves focalize along a 70mm line, with a dept of 40mm. This allows a perfect coverage of the full penis shaft and the crura. We use a short protocol of 4 weekly sessions, applying 900 shocks in each of the 4 following areas: right Crus, left Crus, right Corpus Cavernosum, left Corpus Cavernosum.

We have treated 20 patients and we have a follow up of the first 12 patients, both PDE5-I Responders and non Responders.

Results

IIEF-EF: International Index of Erectile Function – Erectile Function Domain

LSWT – CLINICAL DATA AND REPORTS

	Patient Initials	Baseline IIEF-EF	IIEF-EF at 1 month	IIEF Difference	Success /Failure
1	M I M	9	18	9	Success
2	H I S	8	8	0	Failure
3	N M M	8	8	0	Failure
4	J H S	17	24	7	Success
5	M N S	14	25	11	Success
6	O I S	19	25	6	Success
7	M M K	11	24	13	Success
8	A A D	6	19	13	Success
9	I H A	19	28	9	Success
10	A H	19	28	9	Success
11	S A	12	20	8	Success
12	A M H	17	24	7	Success
Average		13.25	20.92	7.67	84%

SEP- Sexual Encounter Profile

	Patient Initials	Baseline		Follow-up	
		SEP 2	SEP 3	SEP 2	SEP 3
1	M I M	NO	NO	YES	YES
2	H I S	NO	NO	NO	NO
3	N M M	NO	NO	NO	NO
4	J H S	YES	YES	YES	YES
5	M N S	YES	NO	YES	YES
6	O I S	YES	YES	YES	YES
7	M M K	NO	NO	YES	YES
8	A A D	NO	NO	YES	YES
9	I H A	YES	NO	YES	YES
10	A H	YES	YES	YES	YES
11	S A	NO	NO	YES	YES
12	A M H	YES	YES	YES	YES
Average		50%	33%	83%	83%

Comparative follow up: 1 and 3 months

INFO@DIREXGROUP.COM

DIREX

WWW.DIREXGROUP.COM

LSWT – CLINICAL DATA AND REPORTS

	Patients Initials	Response to PDE5-I	IIEF Score			Results Comparison	Delta	Success
			Baseline	1month	3 months			
1	M I M	YES	9	18	18	Same	9	Yes
2	H I S	NO	9	8	8	Same	-1	No
3	N M M	NO	8	8	8	Same	0	No
4	J H S	YES	17	24	24	Same	6	Yes
5	M N S	YES	14	25	30	Improvement	16	Yes
6	O I S	YES	19	25	25	Same	6	Yes
7	M M K	YES	11	24	24	Same	13	Yes
8	A A D	NO	6	19	19	Same	13	Yes
9	I H A	YES	19	28	28	Same	7	Yes
10	A H	YES	19	28	28	Same	7	Yes
11	S A I	YES	12	20	20	Same	8	Yes
12	A M H	YES	17	24	24	Same	7	Yes

- Results at 1 and 3 month follow-up are essentially the same.
- Successful results are seen at 1 month post treatment.

Conclusions

- Initial results at 1 and 3 months show great progress in erectile function.
- Average IIEF-EF increased from 13.25 to 20.92 (57.86 % improvement).
- **84% Success according to success criteria.**
- All mild to moderate cases have succeeded.
- One severe case has improved while 2 severe cases failed.
- SEP and GAQ results have improved.
- No pain and no complications were reported.

The above paper abstract was presented at the 5th *Pan Arab Congress of Sexual Health*, on April 20th 2013, Dubai.



The Effect of Low Intensity Shockwave Therapy on the Erectile Function of Smokers and Non-smokers - Initial Report with a Dedicated System

P. Puppo, A. Casarico

Montallegro Clinic, Genova, Italy

Introduction and Objective

The association between cigarettes smoking and erectile dysfunction (ED) was researched in many studies so far. The strongest relationship found was an adjusted odds ratio of 1.97 for incident ED in smokers compared with nonsmokers. Smoking appears to decrease pelvic and penile vascular flow. Moreover, atherosclerosis is possibly the most important vascular consequence of cigarette smoking. It was established that the effect of smoking on erectile function is related to impairment of endothelium dependent smooth muscle relaxation which is a key process leading to the dilation of vessels in the erectile tissue and an increased blood flow required for erection.

10 years ago, a study that examined the beneficial effects of Shockwaves on ischemia-induced myocardial dysfunction was published and revealed that shockwaves at energy level of 0.09mJ/mm² enhance coronary angiogenesis.

The present study examines the effect of a treatment by a new dedicated device delivering shockwaves at the same energy level and a long focal area adjusted to the male sexual organ, on patients suffering from vascular origin ED, both smokers and non-smokers.

Materials and Methods

25 patients with Vasculogenic ED were treated by the shockwave device, 4 times, once a week. 1600 shocks were applied to each Crus and 900 shocks were applied to each Corpus Cavernosum. No PDE5 inhibitors were used during the treatment and 3 weeks prior treatment. Erectile function was evaluated at baseline and at 1, 3 and 6 months post treatment by 4 self administered questionnaires: IIEF-6, SEP, GAQ and EHS. Success was defined as

LSWT – CLINICAL DATA AND REPORTS

positive answers to SEP and GAQ questions, EHS \geq 3 and a significant increase of IIEF-6 score according to the baseline ED severity.

Results

24 men with a mean age of 62.6 have finished treatment. 53% of them were smokers. There was no significant difference between ED duration, age and baseline IIEF-6 of smokers and non-smokers. Co-morbidities rates were higher in smokers than in non-smokers. The increase in IIEF-6 from baseline to the last follow-up was twice as large in the smokers than the non-smokers. **The overall success rate was 70% and 84% of patients answered "Yes" to both GAQ questions.** No adverse events were reported.

Conclusions

This pilot study shows that eventually this new treatment for vascular ED could be suitable to smoking patients and patients with vascular risk factors. More research is required for confirming the efficacy of this treatment on different populations.

The above paper abstract was presented at the 30th Italian society of Andrology Congress (SIA), on May 2014, Maratea, Italy.